

ExactaChIP™

Human KLF4 Chromatin Immunoprecipitation Kit

Catalog Number ECP3640

Reagents for the immunoprecipitation and detection of KLF4 and KLF4-associated DNA fragments.

This product contains sufficient materials to process 20 samples.

This package insert must be read in its entirety before using this product.

**FOR RESEARCH USE ONLY.
NOT FOR USE IN DIAGNOSTIC PROCEDURES.**

TABLE OF CONTENTS

Contents	Page
INTRODUCTION	2
PRINCIPLE OF THE ASSAY	2
LIMITATIONS OF THE PROCEDURE	3
MATERIALS PROVIDED	3
STORAGE	3
OTHER SUPPLIES REQUIRED	4
PRECAUTIONS	4
REAGENT PREPARATION	4
ASSAY PROCEDURE	5
ASSAY PROCEDURE SUMMARY	6
TYPICAL DATA	7
TECHNICAL HINTS	8
REFERENCES	8
TROUBLESHOOTING GUIDE	9

MANUFACTURED AND DISTRIBUTED BY:

R&D Systems, Inc.	TELEPHONE:	(800) 343-7475
614 McKinley Place NE		(612) 379-2956
Minneapolis, MN 55413	FAX:	(612) 656-4400
United States of America	E-MAIL:	info@RnDSystems.com

DISTRIBUTED BY:

R&D Systems Europe, Ltd.	TELEPHONE:	+44 (0)1235 529449
19 Barton Lane	FAX:	+44 (0)1235 533420
Abingdon Science Park	E-MAIL:	info@RnDSystems.co.uk
Abingdon, OX14 3NB		
United Kingdom		

R&D Systems GmbH	TELEPHONE:	+49 (0)6122 90980
Borsigstrasse 7	FAX:	+49 (0)6122 909819
65205 Wiesbaden-Nordenstadt	E-MAIL:	infogmbh@RnDSystems.co.uk
Germany		

R&D Systems Europe	FREEPHONE:	+0800 90 72 49
77 boulevard Vauban	FAX:	+0800 77 16 68
59041 LILLE CEDEX	E-MAIL:	info@RnDSystems.co.uk
France		

INTRODUCTION

Chromatin is the structure composed of proteins (histones, enzymes, mediators, scaffold, and transcription factors), DNA, and RNA, which is found in the nucleus of eukaryotic cells. Chromatin mediates several central biological processes, such as cell-specific or tissue-specific expression patterns, DNA replication and repair, and mechanisms of gene expression. The understanding of *in vivo* mechanisms underlying gene expression is one of the most fascinating challenges of modern biology. The chromatin immunoprecipitation (ChIP) assay has become one of the most useful techniques in the study of gene expression mechanisms, identification of genetic networks, general transcription regulation proteins, and the identification of transcription factors and their target genes. This assay determines whether a certain protein-DNA interaction is present at a given location, condition, and time point. Protein-DNA complexes are fixed by formaldehyde crosslinking, the chromatin is sheared by sonication, and the protein of interest is immunoprecipitated, bringing along the protein-bound DNA fragments, which can then be detected by PCR. The use of an appropriate antibody for the immunoprecipitation step is considered the most critical factor for a successful ChIP assay (see Figure 1; references 1 - 6).

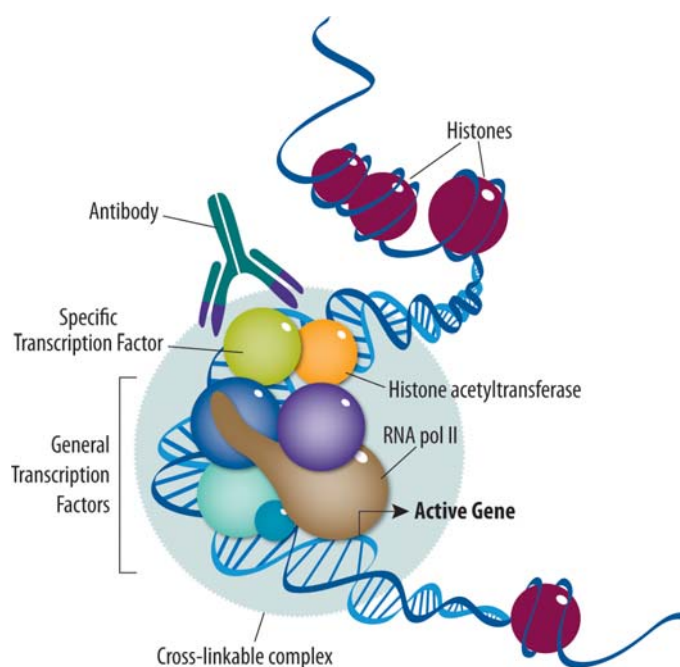


Figure 1: A schematic of a complex of DNA-bound proteins located at the promoter site of an active gene.

PRINCIPLE OF THE ASSAY

This ExactaChIP kit is designed to immunoprecipitate KLF4-DNA complexes and to allow for the rapid PCR detection of KLF4-regulated genes. KLF4 (Krüppel-like factor 4) is a zinc-finger transcription factor abundant in terminally differentiated cells. KLF4 is involved in the differentiation of the colon and the epidermis, contributes to embryonic stem cell self-renewal, and has been shown to be important in the generation of induced pluripotent stem cells (7 - 10). The most important advantage of this kit is that it can be performed in 4 - 5 hours, instead of the traditional 2 - 4 days (11 - 16), by avoiding the use of time-consuming crosslinking reversal and overnight antibody incubation. In addition, it is a straightforward method that is easy to learn. The kit contains a biotinylated anti-human KLF4 antibody, biotinylated normal goat IgG antibody to be used as a negative control for the immunoprecipitation step, and positive control primers for the PCR detection of the *bradykinin 2 receptor (B2R)* promoter, known to associate with KLF4 (17).

LIMITATIONS OF THE PROCEDURE

- FOR RESEARCH USE ONLY. NOT FOR USE IN DIAGNOSTIC PROCEDURES.
- Do not mix or substitute reagents with those from other lots or sources.

MATERIALS PROVIDED

Anti-human KLF4 Antibody (Part 965835) - 100 µg of lyophilized biotinylated goat anti-human KLF4 polyclonal antibody (sufficient for processing 20 samples).

Normal Goat IgG (Part 965806) - 25 µg of lyophilized biotinylated goat IgG.

Human B2R Forward Primer (Part 965836) - 50 µL at 20 pmol/µL (5'-GCAGAGCGGAGAGCGAAGG-3').

Human B2R Reverse Primer (Part 965837) - 50 µL at 20 pmol/µL (5'-GCCTGATGTCCCCACCGTC-3').

Lysis Buffer (Part 895588) - 20 mL of a proprietary formulation.

Dilution Buffer (Part 895589) - 25 mL of a proprietary formulation.

Wash Buffer 1 (Part 895590) - 25 mL of a proprietary formulation.

Wash Buffer 2 (Part 895591) - 25 mL of a proprietary formulation.

Wash Buffer 3 (Part 895592) - 25 mL of a proprietary formulation.

Wash Buffer 4 (Part 895593) - 25 mL of a proprietary formulation.

Chelating Resin Solution (Part 895594) - 2.5 mL of resin in buffer.

STORAGE

Unopened Kit	Store at 2 - 8° C for up to 6 months from the date of receipt.	
Opened/ Reconstituted Reagents	Anti-human KLF4 Antibody	May be stored for up to 1 month at 2 - 8° C.* Aliquot and store for up to 3 months at ≤ -20° C in a manual defrost freezer.* Avoid repeated freeze-thaw cycles.
	Normal Goat IgG	
	Lysis Buffer	May be stored at room temperature for up to 3 months.*
	B2R Forward Primer	May be stored for up to 3 months at 2 - 8° C.*
	B2R Reverse Primer	
	Dilution Buffer	
	Wash Buffers 1 - 4	
Chelating Resin Solution		

*Provided this is within 6 months of the date of receipt.

OTHER SUPPLIES REQUIRED

Materials

- Pipettes and pipette tips
- 1.5 mL microcentrifuge tubes
- Falcon tubes

Reagents

- Formaldehyde (37%; Sigma, Catalog # 252549 or equivalent)
- Glycine (Sigma, Catalog # G6388 or equivalent)
- Leupeptin (Sigma, Catalog # L8511 or equivalent)
- Aprotinin (Sigma, Catalog # A4529 or equivalent)
- Phenylmethylsulfonyl fluoride (PMSF; Sigma, Catalog # P7626 or equivalent)
- Streptavidin beads (magnetic beads, R&D Systems, Catalog # MAG999 or equivalent; or agarose beads, Sigma, Catalog # 85881 or equivalent)
- PCR kit (Applied Biosystems, Catalog # 4311806 or equivalent)
- Phosphate-buffered saline (PBS; Invitrogen, Catalog # 10010-023 or equivalent)
- Dimethyl sulfoxide (DMSO; Sigma, Catalog # D2650 or equivalent)
- DNA purification kit (Qiagen, Catalog # 28144 or equivalent)
- Deionized or distilled water

Equipment

- Sonicator
- Ultrasonic bath
- Rocking or shaking device
- Eppendorf tube rotator
- Benchtop ultracentrifuge
- Refrigerated ultracentrifuge
- Benchtop centrifuge
- Water bath and heatblock
- PCR thermocycler

If using magnetic beads, the following is also required:

- Magnet (R&D Systems, Catalog # MAG997 or equivalent)

PRECAUTIONS

Formaldehyde is flammable, highly toxic, and potentially carcinogenic. Refer to the MSDS from the supplier for handling and hazard information.

The Lysis Buffer is to be used at room temperature.

The Dilution Buffer and Wash Buffers are to be used at 2 - 8° C. It is important that the Dilution Buffer and Wash Buffers be kept cold prior to use.

REAGENT PREPARATION

Reconstitute the Anti-human KLF4 Antibody and Normal Goat IgG in 100 μ L of PBS.

ASSAY PROCEDURE

BG01V human embryonic stem cells were used to immunoprecipitate KLF4.

1. Fix the cells by adding 37% formaldehyde to a 1% final concentration (40 μ L of formaldehyde per 1 mL of media) and, using a rocking or shaking device, swirl samples for 15 minutes at room temperature. **Note:** *The duration of the incubation and the final concentration of the formaldehyde can affect the efficiency of the procedure. A shorter incubation (e.g. 5 minutes) may improve shearing efficiency, however, it may affect the yield of precipitated DNA.*
2. Quench the formaldehyde by adding 1 M glycine to a final concentration of 125 mM (141 μ L of glycine per mL of media). Swirl for 5 minutes at room temperature, pellet the cells, and remove the media. **Note:** *At this point, samples can be stored overnight at $\leq -70^{\circ}$ C.*
3. Resuspend the cell pellet in 500 μ L of Lysis Buffer containing protease inhibitors (10 μ g/mL Leupeptin, 10 μ g/mL Aprotinin, and 1 mM PMSF) per 5×10^6 cells, and incubate on ice for 10 minutes. **Note:** *Keep samples on ice from this step forward.*
4. Sonicate the samples to shear chromatin to an average length of about 1 kilobase (optimization may be required; see the Technical Hints section for details). Transfer the samples to 1.5 mL microcentrifuge tubes. **Note:** *It is important to keep the samples on ice during this step.*
5. Centrifuge the lysates for 10 minutes using a refrigerated ultracentrifuge at 12,000 x g. Collect the supernatant in a clean tube, and discard the pellet.
6. Dilute the supernatant by adding 1 mL of Dilution Buffer (containing the same amount of protease inhibitors as in step 3). Add 5 μ L of the Anti-human KLF4 Antibody to the samples. Use 20 μ L of Normal Goat IgG as a negative control. Incubate for 15 minutes in an ultrasonic bath. **Note:** *Alternatively, incubate for a minimum of 2 hours at 2 - 8 $^{\circ}$ C on a rotating device.*
7. Add 50 μ L of Streptavidin beads (magnetic or agarose) to the samples and rotate for 30 minutes at 2 - 8 $^{\circ}$ C, on a rotating device.
8. If using magnetic beads, collect the beads by leaving the tube in the magnet for 2 minutes. If using agarose beads, collect the beads by centrifugation at 12,000 x g for 1 minute. Perform 4 washes with 2 - 8 $^{\circ}$ C Wash Buffers. For each wash, add 1 mL of Wash Buffer. Start with Wash Buffer 1, and finish with Wash Buffer 4. Pipette the beads up and down between each wash.
9. After the last wash, add 100 μ L of Chelating Resin Solution directly to the beads (resuspend the resin solution by pipetting up and down for about 10 seconds). Boil for 10 minutes using a heatblock or a temperature controlled water bath.
10. Microcentrifuge at 12,000 x g for 1 minute at room temperature and transfer the supernatant (~80 μ L) to a clean microcentrifuge tube.
11. Add 120 μ L of deionized or distilled water to beads. Pipette up and down for 10 seconds, centrifuge for 1 minute, collect the new supernatant, and pool it with the supernatant from Step 10. **Note:** *At this point, samples can be stored at $\leq -20^{\circ}$ C or $\leq -70^{\circ}$ C.*
12. Clean up and concentrate the DNA preparation using a DNA purification kit. Resuspend the DNA in 50 μ L of deionized or distilled water. **Note:** *This step increases the yield of PCR fragments by concentrating the DNA in a smaller volume, further eliminating impurities that might affect the PCR reaction.*
13. Use 25 μ L of DNA sample in PCR reactions (see the Technical Hints section for details).

BG01V cells are licensed from Novocell, Inc.

ASSAY PROCEDURE SUMMARY

Step 1: Crosslink and harvest cells (20 minutes).

Steps 2 - 4: Quench, lyse, and sonicate samples (30 minutes).

Steps 5 - 6: Centrifuge, dilute, and incubate with biotinylated antibody (25 minutes).

Step 7: Add Streptavidin beads and incubate (30 minutes).

Step 8: Collect the beads and wash (15 minutes).

Step 9: Add Chelating Resin Solution directly to the beads and boil (10 minutes).

Step 10: Centrifuge and transfer the supernatant to a clean tube (2 minutes).

Step 11: Add water to beads, centrifuge, collect supernatant, and combine with the previous supernatant (2 minutes).

Step 12: Clean up and concentrate DNA with a DNA purification kit (10 minutes).

Step 13: Run PCR reactions (2 - 3 hours).

Total = ~ 5 Hours

TYPICAL DATA

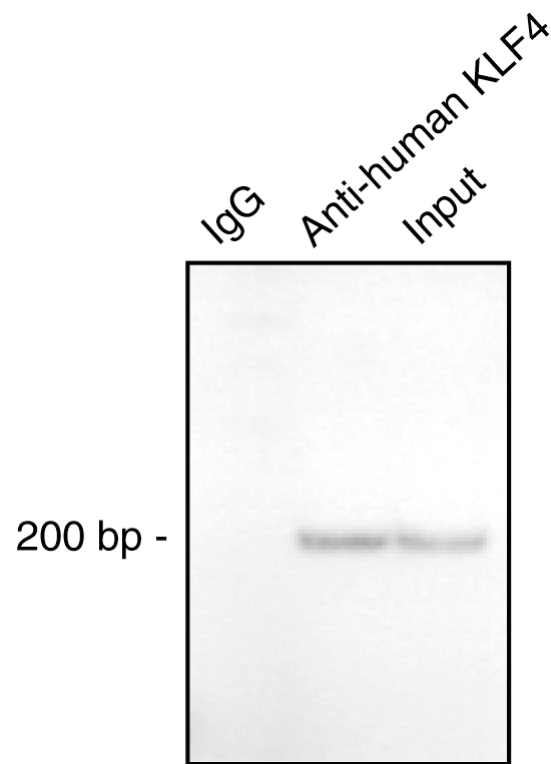


Figure 2: BG01V human embryonic stem cells (1×10^6 cells/sample) were fixed with formaldehyde, lysed, sonicated, and incubated with 5 μg of biotinylated anti-human KLF4 polyclonal antibody or normal goat IgG for 15 minutes in an ultrasonic bath as described in the Assay Procedure. DNA was purified and the *B2R* promoter was detected by standard PCR. In the figure, “Input” represents total cell lysate DNA.

TECHNICAL HINTS

- Stimulation time and conditions should be determined and optimized by the investigator according to the cell type of interest.
- The sonicator settings need to be optimized by the investigator. For example, DNA of 1 kb average size can be obtained by setting a Heat Systems-Ultrasonics sonicator to 4% output power, 70% duty, output control 3, performing 4 rounds of 15 pulses (2 second pulses), resting the samples on ice water for 2 minutes between rounds, and keeping the samples on ice water at all times. Foaming should be avoided as it might decrease the shearing efficiency. Foaming can be caused by inappropriate position of the sonicator probe (too close to the surface or touching the bottom of the tube).
- To determine the DNA fragment average size, run an aliquot of sheared chromatin (after Step 5 of the Procedure) along with a DNA marker on a 1 - 2% (weight/volume) agarose gel, stained with Ethidium bromide, and visualize it under UV light.
- Incubation time with the biotinylated antibody can be changed to overnight at 2 - 8° C to increase efficiency of the immunoprecipitation, if needed. For example, this can be done in case of a limiting number of cells.
- Streptavidin magnetic beads or streptavidin agarose beads can be used with this kit.
- PCR reaction parameters may vary, but an example of the PCR parameters for detection of the *B2R* promoter, as shown in the Typical Data section on page 7, is: 43 cycles, including 5% DMSO with a cycle of 95° C for 9 minutes, 43 cycles at 94° C for 1 minute and 60° C for 1 minute, and one cycle at 60° C for 10 minutes.
- As a positive control for PCR, DNA prepared from samples prior to immunoprecipitation (whole cell lysates) can be used as total or input DNA.
- For other possible controls, use an irrelevant antibody, primers designed to anneal to promoters known not to be regulated by the protein of interest, or primers designed to anneal to regions of the gene known not to bind to the protein of interest.

REFERENCES

1. Solomon, M.J. and A. Varshavsky (1985) Proc. Natl. Acad. Sci. USA **82**:6470.
2. Bernstein, B.E. *et al.* (2005) Cell **120**:169.
3. Cosma, M.P. *et al.* (1999) Cell **97**:299.
4. Fesenfeld, G. and M. Groudine (2003) Nature **421**:448.
5. Dundr, M. *et al.* (2002) Science **298**:1623.
6. Li, C.C. *et al.* (2006) Nature Immunology **7**:692.
7. Nakatake, Y. *et al.* (2006) Mol. Cell. Biol. **26**:7772.
8. Segre, J.A. *et al.* (1999) Nature Genetics **22**:356.
9. Li, Y. *et al.* (2005) Blood **105**:635.
10. Takahashi, K. *et al.* (2007) Cell **131**:861.
11. Nandiwada, S.L. *et al.* (2006) J. Immunol. **177**:401.
12. Nelson, J.D. *et al.* (2006) Nucleic Acids Res. **34**:e2.
13. Becker, P.B. (1999) Chromatin Protocols. Methods in Mol. Biol. Vol. 119, Humana Press.
14. Kuo, M.H. and C.D. Allis (1999) Methods **19**:425.
15. Johnson, K.D. and E.H. Bresnick (2002) Methods **26**:27.
16. Roh, T-Y. *et al.* (2004) Nature Biotechnology **22**:1013.
17. Saifudeen, Z. *et al.* (2005) Am. J. Physiol. Renal Physiol. **288**:F899.

TROUBLESHOOTING GUIDE

Problem	Possible Cause	Possible Solution
Insufficient or degraded sheared chromatin	Over-crosslinked material	Reduce crosslinking time (5 - 15 minutes might be sufficient).
	Solution foamed during sonication	Sonicator tip should be localized in the tube as deep as possible without touching the bottom or walls of the tube. Immerse the tube in an appropriately sized ice water bath, which is most easily done by keeping the tip and tube fixed, placing the bath on a height-adjustable platform, and raising it into position. If there is significant foaming, remove bubbles by high speed centrifugation and resuspend all material.
	Insufficient amount of chromatin	Increase the amount of starting material.
	Under-sonicated	Increase the sonication time, sonicator power settings, and/or number of sonication rounds. Efficiency of sonication also varies, to some extent, according to sample volume and tube size.
	Inappropriate sonicator settings	Settings need to be optimized by the investigator. For example, DNA of 1 kb average size can be obtained by setting a Heat Systems-Ultrasonics sonicator to 4% output power, 70% duty, output control 3, performing 4 rounds of 15 pulses (2 second pulses), resting the samples in icy water for 2 minutes between rounds (to avoid DNA denaturation).
	Any of the above	Visualize the prepared samples in a preliminary experiment to determine the shearing efficiency.
PCR result: Non-specific, low signal, or no signal	Over-crosslinked material	Reduce crosslinking time (5 - 15 minutes might be sufficient).
	Under-crosslinked	Increase crosslinking time, sonication time, sonicator power settings, and/or number of sonication rounds.
	Insufficient amount of chromatin	Increase the amount of starting material.
	Inappropriate immunoprecipitation conditions	Check required reagents and temperatures of water baths and incubators. All wash steps are performed on ice. Wash Buffers 1 - 4 should be kept cold. Use room temperature Lysis Buffer to avoid SDS precipitation.
	PCR reaction did not work	Run genomic DNA as a positive control for primers and PCR reagents. The amount of sample used per reaction might be determined empirically.
	Insufficient number of PCR cycles or suboptimal parameters	Increase the number of PCR cycles and adjust the PCR parameters following the instructions provided by the PCR kit manufacturer.
DNA secondary structures are preventing primer annealing	Use 5% DMSO in PCR reactions.	

Problem	Possible Cause	Possible Solution
PCR result: Non-specific, low signal, or no signal	Inappropriate stimulation time and conditions (protein of interest not bound to DNA)	The investigator, according to the cell type of interest, should determine optimal stimulation conditions.
	Over-sonicated material	To confirm DNA suitability, check the overall appearance of the DNA fragments (it should be a DNA smear) and the average size. Run an aliquot of sheared chromatin (after Step 5 of the Assay Procedure) along with a DNA marker on a 1 - 2% (weight/volume) agarose gel, stained with Ethidium bromide, and visualize it under UV light.
	Inappropriate incubation time with antibody	For proteins of low abundance or small numbers of cells, incubation time can be increased to overnight at 2 - 8° C to increase the efficiency of the immunoprecipitation step.
	Primer design not optimal	Review primer design and composition. Use one of the many free primer design software packages that can be found on the web.
	PCR parameters not appropriate for the gene target	Adjust denaturation, annealing and extension times, as well as the number of cycles.
	Multiple bands observed in the PCR result	Check PCR parameters (number of cycles, temperatures, primers, enzyme, and magnesium concentration).
	Smear product band by carry-over contamination	Set up PCR reactions in an area different from the area where PCR products are analyzed.
	Smear product band due to reasons other than contamination	Check PCR parameters (number of cycles, temperatures, primers, enzyme, and magnesium concentration).
	Partial or complete loss of PCR product	Set up reactions in a separate area. Test a new aliquot of the sample.
	Many longer non-specific products	Decrease annealing time, extension time and temperature, primer, template, and polymerase amount. Increase annealing temperature and magnesium concentration. Check primers for repetitive sequences.
	Many shorter non-specific products	Increase annealing time and temperature, extension time and temperature, and magnesium concentration. Decrease primer, template, and polymerase amount. Check primers for repetitive sequences.
Reaction was working but is not any longer	Check all PCR ingredients. Change dNTP solution (sensitive to freeze-thaw cycles). Check for primer reliability. Increase primer and template amount. Decrease annealing temperature.	

Problem	Possible Cause	Possible Solution
PCR result: Non-specific, low signal, or no signal	PCR product is weak	Decrease the annealing temperature as low as possible. Increase primer, polymerase, and template amount. Use BSA (0.5 µg/mL). Check primer sequences for mismatches and/or increase the primer length by 5 nucleotides.
	Primers with different melting temperatures	Increase the length of the primer with a low melting temperature.
	Pipetting error	To minimize errors, prepare a “master mix”, containing all PCR ingredients (with the exception of template and primer, if using different primers) and add this mix to the DNA template sample. Use only calibrated pipettes.
	Polymerase degraded	Keep PCR ingredients on ice at all times. Add polymerase to the master mix after adding the PCR buffer.
	Non-mixed solution	Thaw completely and vortex the PCR reagents prior to adding it to the master mix. Magnesium chloride solutions, for example, form a concentration gradient when frozen.
	Too much dNTPs	Too much dNTP can inhibit the PCR reaction. The optimal range is 40 - 200 µM.
	Presence of inhibitors	Possible inhibitors include chloroform, phenol, EDTA, SDS, bromophenol blue, and ethanol. Use of DNA purification columns should eliminate inhibitors.
	Excess or insufficient template	Use a spectrophotometer to check for the presence and purity of the DNA samples. For 25 - 30 cycles, 10,000 copies of the target sequence are normally sufficient.
	Primer dimers	Primer dimers are bands of less than 100 bp that look like small PCR products. Use less primers, re-design to avoid self-annealing (primers should not share a large percentage of complimentary sequence), titrate magnesium concentration, and increase the annealing temperature. Adding DMSO up to 5% should help with primer dimers.
	Wrong magnesium concentration	The free magnesium ion serves as a co-factor for the DNA polymerase. Its concentration must exceed the dNTP concentration.
	Contamination (amplification in negative control)	Set up PCR reactions in an area different from the area where PCR products are analyzed, change gloves frequently, prepare your own sets of reagents and store them in aliquots, use sterile tubes, add all components of the reaction to the microfuge tube before adding the template DNA, and include a positive control as well as a negative control that contains all the components of the PCR except the template DNA.