

DuoSet[®] IC

Human Total IFN- γ R1

Catalog Number DYC673-2
DYC673-5

For the development of sandwich ELISAs to measure human total Interferon Gamma Receptor 1 (IFN- γ R1) in cell lysates.

This package insert must be read in its entirety before using this product.

**FOR RESEARCH USE ONLY.
NOT FOR USE IN DIAGNOSTIC PROCEDURES.**

TABLE OF CONTENTS

Contents	Page
PRINCIPLE OF THE ASSAY	2
MATERIALS PROVIDED.	2
OTHER MATERIALS REQUIRED	3
SOLUTIONS REQUIRED	3
REAGENT PREPARATION	4
PREPARATION OF SAMPLES.	4
PRECAUTION	5
TECHNICAL HINTS AND LIMITATIONS.	5
GENERAL ELISA PROTOCOL	6
CALCULATION OF RESULTS	7
TYPICAL DATA	7
CALIBRATION.	8
SENSITIVITY	8
QUANTIFICATION	9
SPECIFICITY	9
PLATE LAYOUT	10

MANUFACTURED AND DISTRIBUTED BY:

R&D Systems, Inc.
614 McKinley Place NE
Minneapolis, MN 55413
United States of America

TELEPHONE: (800) 343-7475
(612) 379-2956
FAX: (612) 656-4400
E-MAIL: info@RnDSystems.com

DISTRIBUTED BY:

R&D Systems Europe, Ltd.
19 Barton Lane
Abingdon Science Park
Abingdon, OX14 3NB
United Kingdom

TELEPHONE: +44 (0)1235 529449
FAX: +44 (0)1235 533420
E-MAIL: info@RnDSystems.co.uk

R&D Systems GmbH
Borsigstrasse 7
65205 Wiesbaden-Nordenstadt
Germany

TELEPHONE: +49 (0)6122 90980
FAX: +49 (0)6122 909819
E-MAIL: infogmbh@RnDSystems.co.uk

R&D Systems Europe
77 boulevard Vauban
59041 LILLE CEDEX
France

FREEPHONE: +0800 90 72 49
FAX: +0800 77 16 68
E-MAIL: info@RnDSystems.co.uk

PRINCIPLE OF THE ASSAY

This DuoSet IC ELISA contains the basic components required for the development of sandwich ELISAs to measure human IFN- γ R1, also known as Ufo, in cell lysates. An immobilized capture antibody specific for human IFN- γ R1 binds both tyrosine-phosphorylated and unphosphorylated IFN- γ R1. After washing away unbound material, a biotinylated detection antibody specific for total IFN- γ R1 is used to detect both tyrosine-phosphorylated and unphosphorylated receptor, utilizing a standard Streptavidin-HRP format.

MATERIALS PROVIDED

Store the unopened kit at 2 - 8° C. Do not use past kit expiration date.

			Vials Provided	
Description	Part #	Storage Conditions	Cat. # DYC673-2	Cat. # DYC673-5
Total IFN- γ R1 Capture Antibody	842002	2 - 8° C	1	2
Total IFN- γ R1 Detection Antibody	842003	2 - 8° C	1	2
Total IFN- γ R1 Standard	842004	2 - 8° C	3	5
Streptavidin-HRP	890803	2 - 8° C	1	1

DYC673-2 contains sufficient materials to run ELISAs on at least two 96 well plates.*

DYC673-5 contains sufficient materials to run ELISAs on at least five 96 well plates.*

*Provided the following conditions are met:

- The reagents are prepared as described in this package insert.
- The assay is run as described in the General ELISA Protocol on page 6.
- The recommended microplates, buffers, diluents, substrates, and solutions are used.

OTHER MATERIALS REQUIRED

- Aprotinin (Sigma # A6279)
- Leupeptin (Sigma # L8511)
- NP-40 (or NP-40 Substitute) (Igepal # CA-630 or Sigma # I3021)
- Sodium orthovanadate (Na_3VO_4) (Sigma # S6508), activated
- Glycerol
- Sodium chloride (NaCl)
- Pipettes and pipette tips
- Deionized or distilled water
- 96 well microplates [Costar EIA Plates (Catalog # 2592 or R&D Systems Catalog # DY990) are suggested]
- Plate sealers (R&D Systems, Catalog # DY992)
- Squirt bottle, manifold dispenser, or automated microplate washer

SOLUTIONS REQUIRED

PBS - 137 mM NaCl , 2.7 mM KCl , 8.1 mM Na_2HPO_4 , 1.5 mM KH_2PO_4 , pH 7.2 - 7.4, 0.2 μm filtered.

Wash Buffer - 0.05% Tween[®] 20 in PBS, pH 7.2 - 7.4 (R&D Systems, Catalog # WA126).

Block Buffer - 1% BSA*, 0.05% NaN_3 in PBS, pH 7.2 - 7.4.

IC Diluent #12** - 1% NP-40, 20 mM Tris (pH 8.0), 137 mM NaCl , 10% glycerol, 2 mM EDTA, 1 mM activated sodium orthovanadate.

IC Diluent #14 - 20 mM Tris, 137 mM NaCl , 0.05% Tween 20, 0.1% BSA*, pH 7.2 - 7.4.

Lysis Buffer #9** - 1% NP-40, 20 mM Tris (pH 8.0), 137 mM NaCl , 10% glycerol, 2 mM EDTA, 1 mM activated sodium orthovanadate, 10 $\mu\text{g/mL}$ Aprotinin, 10 $\mu\text{g/mL}$ Leupeptin.

Note: *Lysis Buffer #9 consists of IC Diluent #12 plus 10 $\mu\text{g/mL}$ Aprotinin and 10 $\mu\text{g/mL}$ Leupeptin. Approximately 50 mL of IC Diluent #12 is required to run the assay on one plate.*

Substrate Solution - 1:1 mixture of Color Reagent A (H_2O_2) and Color Reagent B (Tetramethylbenzidine) (R&D Systems, Catalog # DY999).

Stop Solution - 2 N H_2SO_4 (R&D Systems, Catalog # DY994).

*The use of R&D Systems Reagent Diluent Concentrate 2 (Catalog # DY995) or Sigma Bovine Serum Albumin (Catalog # A7030) is recommended. All buffers containing BSA must be stored at 2 - 8° C.

**Sample Diluent Concentrate 2 (2X) (R&D Systems, Catalog # DYC002), supplemented as per the package insert.

Tween is a registered trademark of ICI Americas.

REAGENT PREPARATION

Bring all reagents to room temperature before use.

Total IFN- γ R1 Capture Antibody (Part 842002) - 180 $\mu\text{g/mL}$ of mouse anti-human IFN- γ R1 antibody when reconstituted with 200 μL of PBS. After reconstitution, store at 2 - 8° C for up to 30 days or aliquot and store at $\leq -20^\circ\text{C}$ in a manual defrost freezer or at $\leq -70^\circ\text{C}$ for up to 3 months.*

Total IFN- γ R1 Detection Antibody (Part 842003) - 1.8 $\mu\text{g/mL}$ of biotinylated goat anti-human IFN- γ R1 antibody when reconstituted with 1.0 mL of IC Diluent #14. After reconstitution, store at 2 - 8° C for up to 30 days or aliquot and store at $\leq -20^\circ\text{C}$ in a manual defrost freezer or at $\leq -70^\circ\text{C}$ for up to 3 months.*

Total IFN- γ R1 Standard (Part 842004) - 120 ng/mL of recombinant human IFN- γ R1 when reconstituted with 500 μL of IC Diluent #12. A seven point standard curve using 2-fold serial dilutions and a high standard of 4000 pg/mL is recommended. Use a fresh standard for each assay.

Streptavidin-HRP (Part 890803) - 1 mL of Streptavidin conjugated to horseradish-peroxidase. Store at 2 - 8° C. **DO NOT FREEZE.**

*Provided this is within the expiration date of the kit.

PREPARATION OF SAMPLES

Cell Lysates - Rinse cells with PBS, making sure to remove any remaining PBS before adding the lysis buffer. Solubilize cells at 1×10^7 cells/mL in Lysis Buffer #9. Pipette up and down to resuspend and rock the lysates gently at 2 - 8° C for 30 minutes. Microcentrifuge at 14,000 x g for 5 minutes, and transfer the supernate into a clean test tube. Quantitation of sample protein concentrations using a total protein assay is recommended. For the initial experiment, use a quantity of lysate similar to that used for immunoprecipitation-Western blot. Use the lysates immediately or store at $\leq -70^\circ\text{C}$. If needed, further dilutions should be made in IC Diluent #12.

PRECAUTION

The Stop Solution suggested for use with this kit is an acidic solution. Wear eye, hand, face, and clothing protection when using this material.

TECHNICAL HINTS AND LIMITATIONS

- This DuoSet IC ELISA should not be used beyond the expiration date on the kit label.
- Individual results may vary due to differences in technique, plasticware and water sources.
- It is important that the diluents selected for reconstitution and for dilution of the standard reflect the environment of the samples being measured. The diluents suggested in this protocol should be suitable for most cell lysates.
- The type of enzyme and substrate and the concentrations of capture/detection antibodies used can be varied to create an immunoassay with a different sensitivity and dynamic range. A basic understanding of immunoassay development is required for the successful use of these reagents in immunoassays.
- A thorough and consistent wash technique is essential for proper assay performance. Wash Buffer should be dispensed forcefully and removed completely from the wells by aspiration or decanting. Remove any remaining Wash Buffer by inverting the plate and blotting it against clean paper towels.
- Use a fresh reagent reservoir and pipette tips for each step.
- It is recommended that all standards and samples be assayed in duplicate.
- Avoid microbial contamination of reagents and buffers. This may interfere with the sensitivity of the assay. Buffers containing protein should be made under aseptic conditions and stored at 2 - 8° C or be prepared fresh daily.

GENERAL ELISA PROTOCOL

A plate layout is provided to record standards and samples assayed.

Plate Preparation

1. Dilute the Capture Antibody to the working concentration of 1.0 µg/mL in PBS without carrier protein. Immediately coat a 96 well microplate with 100 µL per well of the diluted Capture Antibody. Seal the plate and incubate overnight at room temperature.
2. Aspirate each well and wash with Wash Buffer, repeating the process two times for a total of 3 washes. Wash by filling each well with Wash Buffer (400 µL) using a squirt bottle, manifold dispenser or autowasher. Complete removal of liquid at each step is essential for good performance. After the last wash, remove any remaining Wash Buffer by aspirating or by inverting the plate and blotting it against clean paper towels.
3. Block plates by adding 300 µL of Block Buffer to each well. Incubate at room temperature for 1 - 2 hours.
4. Repeat the aspiration/wash as in step 2. The plates are now ready for sample addition.

Assay Procedure

1. Add 100 µL of sample or standards in IC Diluent #12 per well. Use IC Diluent # 12 as the zero standard. Cover with a plate sealer and incubate 2 hours at room temperature.
Note: *A seven point standard curve using 2-fold serial dilutions and a high standard of 4000 pg/mL is recommended.*
2. Repeat the aspiration/wash as in step 2 of Plate Preparation.
3. Dilute the Detection Antibody to a working concentration of 50 ng/mL in IC Diluent #14 before use. Add 100 µL of the diluted Detection Antibody to each well. Cover with a new plate sealer and incubate 2 hours at room temperature.
4. Repeat the aspiration/wash as in step 2 of Plate Preparation.
5. Immediately before use, dilute the Streptavidin-HRP to the working concentration specified on the vial label using IC Diluent #14. Add 100 µL of the diluted Streptavidin-HRP to each well. Incubate for 20 minutes at room temperature. Avoid placing the plate in direct light.
6. Repeat the aspiration/wash as in step 2 of Plate Preparation.
7. Add 100 µL of Substrate Solution to each well. Incubate for 20 minutes at room temperature. Avoid placing the plate in direct light.
8. Add 50 µL of Stop Solution to each well. Gently tap the plate to ensure thorough mixing.
9. Determine the optical density of each well immediately, using a microplate reader set to 450 nm. If wavelength correction is available, set to 540 nm or 570 nm. If wavelength correction is not available, subtract readings at 540 nm or 570 nm from the readings at 450 nm. This subtraction will correct for optical imperfections in the plate. Readings made directly at 450 nm without correction may be higher and less accurate.

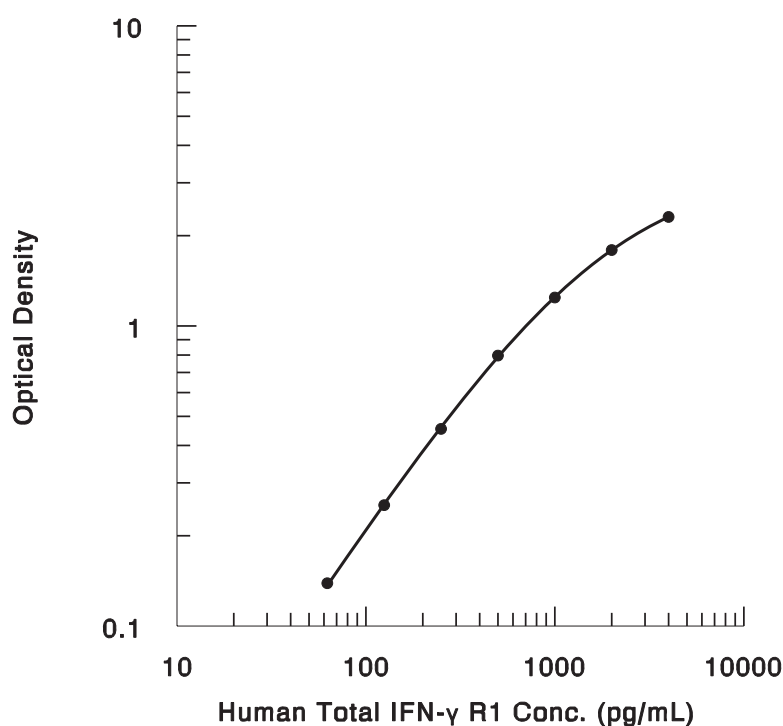
CALCULATION OF RESULTS

Average the duplicate readings for each standard and sample, then subtract the average zero standard optical density.

Create a standard curve by reducing the data using computer software capable of generating a four parameter logistic (4-PL) curve-fit. As an alternative, construct a standard curve by plotting the mean absorbance for each standard on the y-axis against the concentration on the x-axis and draw a best fit curve through the points on the graph. The data may be linearized by plotting the log of the IFN- γ R1 concentrations versus the log of the O.D. and the best fit line can be determined by regression analysis. This procedure will produce an adequate but less precise fit of the data.

TYPICAL DATA

A standard curve should be generated for each set of samples assayed. The graph below represents typical data generated when using the Human Total IFN- γ R1 DuoSet IC ELISA. The standard curve was calculated using a computer generated 4-PL curve-fit. This standard curve is for demonstration purposes only.

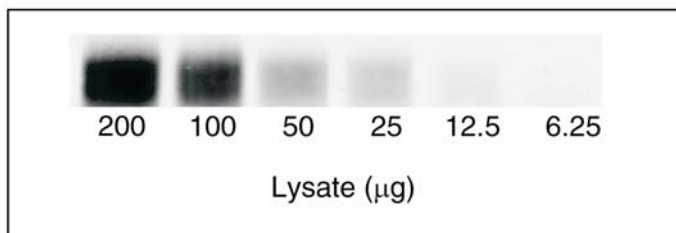


CALIBRATION

This DuoSet IC ELISA is calibrated against a highly purified NS0-expressed recombinant human IFN- γ R1 produced at R&D Systems.

SENSITIVITY

A.



B.

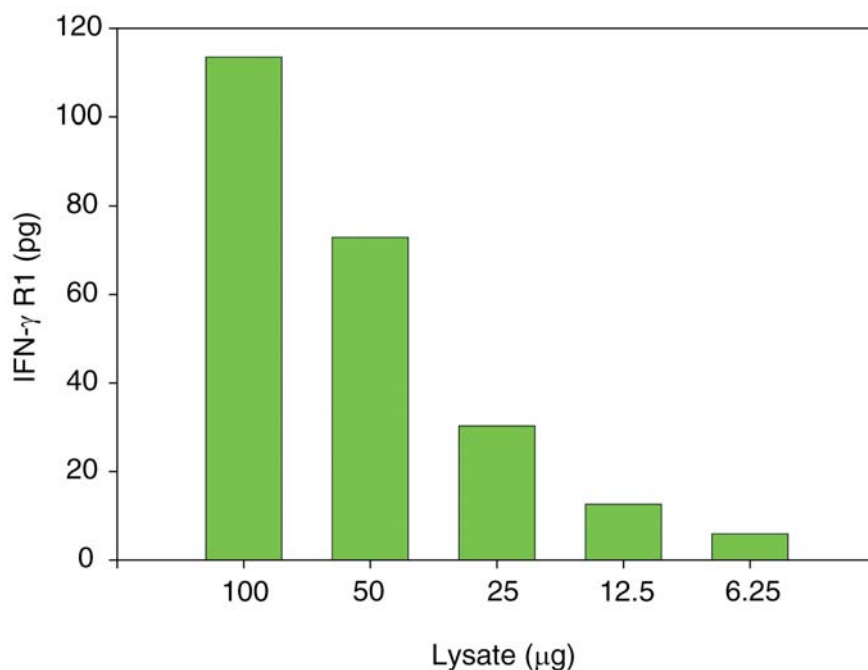


Figure 1: The Human Total IFN- γ R1 DuoSet IC ELISA is more sensitive than immunoprecipitation (IP)-Western blot analysis. Lysates prepared from the human erythroleukemic cell line TF-1 were diluted in series and analyzed by **(A)** IP-Western blot and **(B)** this DuoSet IC ELISA. IPs were performed using an anti-IFN- γ R1 monoclonal antibody and goat anti-mouse agarose. Immunoblots were incubated with a biotinylated anti-IFN- γ R1 polyclonal antibody (R&D Systems, Catalog # BAF673) to detect total IFN- γ R1. Bands were visualized with Streptavidin-HRP (R&D Systems, Catalog # DY998) followed by chemiluminescent detection. Human IFN- γ R1 can be detected by the Human Total IFN- γ R1 DuoSet IC ELISA by using approximately 2 - 4 times less lysate than is needed for a conventional IP-Western blot.

QUANTIFICATION

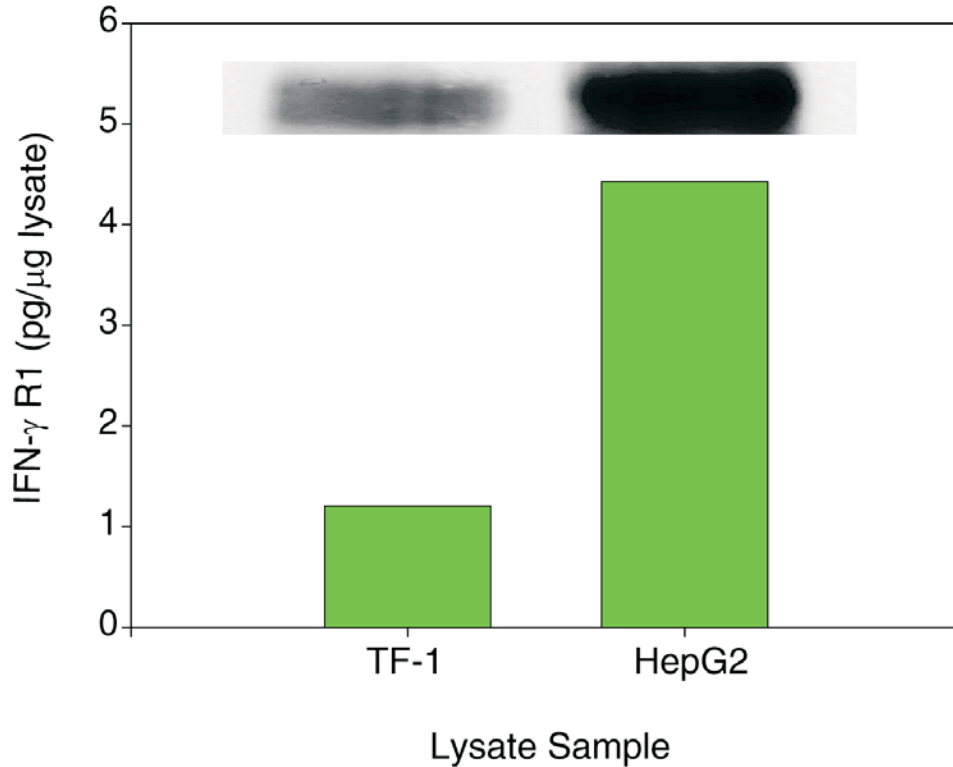


Figure 2: The Human Total IFN- γ R1 DuoSet IC ELISA measures the relative level of IFN- γ R1. Lysates were prepared from TF-1 cells and the human hepatocellular carcinoma cell line HepG2. ELISA and IP-Western blot (inset) analyses were performed using 50 μ g and 200 μ g of lysate, respectively. The IP-Western blot was performed as described in Figure 1.

SPECIFICITY

To determine specificity, recombinant human IL-10 sR α , recombinant human IL-10 R β /Fc Chimera, and recombinant human IFN- γ R2/Fc Chimera were assayed at 100 ng/mL and did not cross-react or interfere.

PLATE LAYOUT

Use this plate layout as a record of standards and samples assayed.

1								
2								
3								
4								
5								
6								
7								
8								
9								
10								
11								
12								
	A	B	C	D	E	F	G	H

NOTES