

DuoSet[®] IC

Human Total FGF R2 α

Catalog Number DYC665-2

DYC665-5

DYC665E

For the development of sandwich ELISAs to measure Fibroblast Growth Factor Receptor 2 Alpha (FGF R2 α) in cell lysates.

This package insert must be read in its entirety before using this product.

**FOR RESEARCH USE ONLY.
NOT FOR USE IN DIAGNOSTIC PROCEDURES.**

TABLE OF CONTENTS

Contents	Page
PRINCIPLE OF THE ASSAY	2
MATERIALS PROVIDED.	2
OTHER MATERIALS REQUIRED	3
SOLUTIONS REQUIRED	3
REAGENT PREPARATION	4
PREPARATION OF SAMPLES.	4
PRECAUTIONS	5
TECHNICAL HINTS AND LIMITATIONS.	5
GENERAL ELISA PROTOCOL	6
CALCULATION OF RESULTS	7
TYPICAL DATA	7
CALIBRATION.	7
SENSITIVITY	8
SPECIFICITY	8
PLATE LAYOUT	9

MANUFACTURED AND DISTRIBUTED BY:

R&D Systems, Inc.
614 McKinley Place NE
Minneapolis, MN 55413
United States of America

TELEPHONE: (800) 343-7475
(612) 379-2956
FAX: (612) 656-4400
E-MAIL: info@RnDSystems.com

DISTRIBUTED BY:

R&D Systems Europe, Ltd.
19 Barton Lane
Abingdon Science Park
Abingdon, OX14 3NB
United Kingdom

TELEPHONE: +44 (0)1235 529449
FAX: +44 (0)1235 533420
E-MAIL: info@RnDSystems.co.uk

R&D Systems China Co. Ltd.
24A1 Hua Min Empire Plaza
726 West Yan An Road
Shanghai PRC 200050

TELEPHONE: +86 (21) 52380373
FAX: +86 (21) 52371001
E-MAIL: info@RnDSystemsChina.com.cn

PRINCIPLE OF THE ASSAY

This DuoSet IC ELISA contains the basic components required for the development of sandwich ELISAs to measure human FGF R2 α in cell lysates. An immobilized capture antibody specific for human FGF R2 α binds both tyrosine-phosphorylated and unphosphorylated FGF R2 α . After washing away unbound material, a biotinylated detection antibody specific for human FGF R2 α is used to detect captured receptor, utilizing a standard Streptavidin-HRP format.

MATERIALS PROVIDED

Store the unopened kit at 2-8° C. Do not use past kit expiration date.

Description	Part #	Storage Conditions	Vials Provided	
			Cat. # DYC665-2	Cat. # DYC665-5
Human Total FGF R2 α Capture Antibody	841648	2-8° C	1	2
Human Total FGF R2 α Detection Antibody	841649	2-8° C	1	2
Human Total FGF R2 α Standard	841650	2-8° C	3	5
Streptavidin-HRP	890803	2-8° C	1	1

DYC665-2 contains sufficient materials to run ELISAs on at least two 96 well plates.*
DYC665-5 contains sufficient materials to run ELISAs on at least five 96 well plates.*

This kit is also available in an Economy Pack (R&D Systems, Catalog # DYC665E). Economy Packs contain sufficient materials to run ELISAs on 15 microplates.* Specific vial counts of each component may vary. Please refer to the literature accompanying your order for specific vial counts.

*Provided the following conditions are met:

- The reagents are prepared as described in this package insert.
- The assay is run as described in the General ELISA Protocol on page 6.
- The recommended microplates, buffers, diluents, substrates, and solutions are used.

OTHER MATERIALS REQUIRED

- Aprotinin (Sigma # A6279)
- Leupeptin (Tocris # 1167)
- NP-40 Alternative (EMD/Calbiochem # 492016)
- Sodium azide (NaN_3) (Sigma # S2002)
- Sodium orthovanadate (Na_3VO_4) (Sigma # S6508), activated
- Pipettes and pipette tips
- Deionized or distilled water
- 96 well microplates (R&D Systems Catalog # DY990)
- Plate sealers (R&D Systems, Catalog # DY992)
- Squirt bottle, manifold dispenser, or automated microplate washer

SOLUTIONS REQUIRED

PBS - 137 mM NaCl, 2.7 mM KCl, 8.1 mM Na_2HPO_4 , 1.5 mM KH_2PO_4 , pH 7.2-7.4, 0.2 μm filtered (R&D Systems, Catalog # DY006).

Wash Buffer - 0.05% Tween[®] 20 in PBS, pH 7.2-7.4 (R&D Systems, Catalog # WA126).

Block Buffer - 1% BSA*, 0.05% NaN_3 in PBS, pH 7.2-7.4.

IC Diluent #12** - 1% NP-40 Alternative, 20 mM Tris (pH 8.0), 137 mM NaCl, 10% glycerol, 2 mM EDTA, 1 mM activated sodium orthovanadate.

IC Diluent #14 - 20 mM Tris, 137 mM NaCl, 0.05% Tween 20, 0.1% BSA*, pH 7.2-7.4.

Lysis Buffer #9** - 1% NP-40 Alternative, 20 mM Tris (pH 8.0), 137 mM NaCl, 10% glycerol, 2 mM EDTA, 1 mM activated sodium orthovanadate, 10 $\mu\text{g}/\text{mL}$ Aprotinin, 10 $\mu\text{g}/\text{mL}$ Leupeptin.

Note: *Lysis Buffer #9 consists of IC Diluent #12 plus 10 $\mu\text{g}/\text{mL}$ Aprotinin and 10 $\mu\text{g}/\text{mL}$ Leupeptin. Approximately 50 mL of IC Diluent #12 is required to run the assay on one plate.*

Substrate Solution - 1:1 mixture of Color Reagent A (H_2O_2) and Color Reagent B (Tetramethylbenzidine) (R&D Systems, Catalog # DY999).

Stop Solution - 2 N H_2SO_4 (R&D Systems, Catalog # DY994).

*The use of R&D Systems Reagent Diluent Concentrate 2 (Catalog # DY995) or Millipore Bovine Serum Albumin, Fraction V, Protease free (Catalog # 82-045) is recommended. All buffers containing BSA must be stored at 2-8° C.

**Alternatively, use Sample Diluent Concentrate 2 (2X) (R&D Systems, Catalog # DYC002), prepared as described in the DYC002 insert.

REAGENT PREPARATION

Bring all reagents to room temperature before use.

Human Total FGF R2 α Capture Antibody (Part 841648) - Each vial contains 360 $\mu\text{g}/\text{mL}$ of mouse anti-human FGF R2 α antibody when reconstituted with 200 μL of PBS. After reconstitution, store at 2-8 $^{\circ}$ C for up to 30 days or aliquot and store at $\leq -20^{\circ}$ C in a manual defrost freezer or at $\leq -70^{\circ}$ C for up to 3 months.*

Human Total FGF R2 α Detection Antibody (Part 841649) - Each vial contains 36 $\mu\text{g}/\text{mL}$ of biotinylated mouse anti-human FGF R2 α antibody when reconstituted with 1.0 mL of IC Diluent #14. After reconstitution, store at 2-8 $^{\circ}$ C for up to 30 days or aliquot and store at $\leq -20^{\circ}$ C in a manual defrost freezer or at $\leq -70^{\circ}$ C for up to 3 months.*

Human Total FGF R2 α Standard (Part 841650) - Each vial contains 300 ng/mL of recombinant human FGF R2 α when reconstituted with 500 μL of IC Diluent #12. **Use within one hour of reconstitution. Use a fresh standard for each assay.** A seven point standard curve using 2-fold serial dilutions and a high standard of 10,000 pg/mL is recommended.

Streptavidin-HRP (Part 890803) - 1 mL of Streptavidin conjugated to horseradish-peroxidase. Immediately before use, dilute the Streptavidin-HRP to the working concentration specified on the vial label using IC Diluent #14. Store at 2-8 $^{\circ}$ C. **DO NOT FREEZE.**

*Provided this is within the expiration date of the kit.

PREPARATION OF SAMPLES

Cell Lysates - Rinse cells two times with PBS, making sure to remove any remaining PBS after the second rinse. Solubilize cells at 1×10^7 cells/mL in Lysis Buffer #9 and allow samples to sit on ice for 15 minutes. Assay immediately or store at $\leq -70^{\circ}$ C. Before use, centrifuge samples at 2000 x g for 5 minutes and transfer the supernate to a clean test tube. Sample protein concentration may be quantified using a total protein assay. If needed, further dilutions should be made in IC Diluent #12.

PRECAUTIONS

The Stop Solution recommended for use with this kit is an acid solution.

Some components in this kit contain ProClin[®] which may cause an allergic skin reaction. Avoid breathing mist.

Color Reagent B recommended for use with this kit may cause skin, eye, and respiratory irritation. Avoid breathing fumes.

Wear protective gloves, clothing, eye, and face protection. Wash hands thoroughly after handling. Please refer to the MSDS on our website prior to use.

TECHNICAL HINTS AND LIMITATIONS

- This DuoSet IC ELISA should not be used beyond the expiration date on the kit label.
- Individual results may vary due to differences in technique, plasticware and water sources.
- It is important that the diluents selected for reconstitution and for dilution of the standard reflect the environment of the samples being measured. The diluents suggested in this protocol should be suitable for most cell lysates.
- The type of enzyme and substrate and the concentrations of capture/detection antibodies used can be varied to create an immunoassay with a different sensitivity and dynamic range. A basic understanding of immunoassay development is required for the successful use of these reagents in immunoassays.
- A thorough and consistent wash technique is essential for proper assay performance. Wash Buffer should be dispensed forcefully and removed completely from the wells by aspiration or decanting. Remove any remaining Wash Buffer by inverting the plate and blotting it against clean paper towels.
- Use a fresh reagent reservoir and pipette tips for each step.
- It is recommended that all standards and samples be assayed in duplicate.
- Avoid microbial contamination of reagents and buffers. This may interfere with the sensitivity of the assay. Buffers containing protein should be made under aseptic conditions and stored at 2-8° C or be prepared fresh daily.

All trademarks and registered trademarks are the property of their respective owners.

GENERAL ELISA PROTOCOL

A plate layout is provided to record standards and samples assayed.

Plate Preparation

1. Dilute the Capture Antibody to the working concentration of 2.0 $\mu\text{g}/\text{mL}$ in PBS without carrier protein. Immediately coat a 96 well microplate with 100 μL per well of the diluted Capture Antibody. Seal the plate and incubate overnight at room temperature.
2. Aspirate each well and wash with Wash Buffer, repeating the process two times for a total of 3 washes. Wash by filling each well with Wash Buffer (400 μL) using a squirt bottle, manifold dispenser, or autowasher. Complete removal of liquid at each step is essential for good performance. After the last wash, remove any remaining Wash Buffer by aspirating or by inverting the plate and blotting it against clean paper towels.
3. Block plates by adding 300 μL of Block Buffer to each well. Incubate at room temperature for 1-2 hours.
4. Repeat the aspiration/wash as in step 2. The plates are now ready for sample addition.

Assay Procedure

1. Add 100 μL of sample or standards in IC Diluent #12 per well. Use IC Diluent #12 as the zero standard. Cover with a plate sealer and incubate 2 hours at room temperature.
Note: *A seven point standard curve using 2-fold serial dilutions and a high standard of 10,000 pg/mL is recommended.*
2. Repeat the aspiration/wash as in step 2 of Plate Preparation.
3. Dilute the Detection Antibody to a working concentration of 1.0 $\mu\text{g}/\text{mL}$ in IC Diluent #14 before use. Prepare only as much Detection Antibody as required to run each assay. Add 100 μL of the diluted Detection Antibody to each well. Cover with a new plate sealer and incubate 2 hours at room temperature.
4. Repeat the aspiration/wash as in step 2 of Plate Preparation.
5. Add 100 μL of the diluted Streptavidin-HRP to each well. Incubate for 20 minutes at room temperature. Avoid placing the plate in direct light.
6. Repeat the aspiration/wash as in step 2 of Plate Preparation.
7. Add 100 μL of Substrate Solution to each well. Incubate for 20 minutes at room temperature. Avoid placing the plate in direct light.
8. Add 50 μL of Stop Solution to each well. Gently tap the plate to ensure thorough mixing.
9. Determine the optical density of each well immediately, using a microplate reader set to 450 nm. If wavelength correction is available, set to 540 nm or 570 nm. If wavelength correction is not available, subtract readings at 540 nm or 570 nm from the readings at 450 nm. This subtraction will correct for optical imperfections in the plate. Readings made directly at 450 nm without correction may be higher and less accurate.

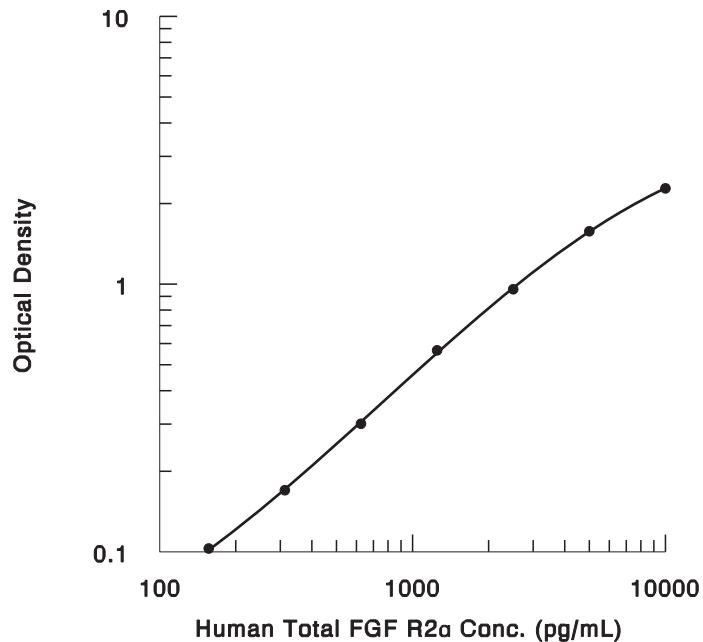
CALCULATION OF RESULTS

Average the duplicate readings for each standard and sample, then subtract the average zero standard optical density (O.D.).

Create a standard curve by reducing the data using computer software capable of generating a four parameter logistic (4-PL) curve-fit. As an alternative, construct a standard curve by plotting the mean absorbance for each standard on the y-axis against the concentration on the x-axis and draw a best fit curve through the points on the graph. The data may be linearized by plotting the log of the human FGF R2 α concentrations versus the log of the O.D. and the best fit line can be determined by regression analysis. This procedure will produce an adequate but less precise fit of the data.

TYPICAL DATA

A standard curve should be generated for each set of samples assayed. The graph below represents typical data generated when using the Human Total FGF R2 α DuoSet IC ELISA. The standard curve was calculated using a computer generated 4-PL curve-fit. This standard curve is for demonstration purposes only.



CALIBRATION

The Human Total FGF R2 α DuoSet IC ELISA is calibrated against a highly purified NS0-expressed recombinant human FGF R2 α produced at R&D Systems. Samples containing natural FGF R2 α showed linear dilution parallel to the standard curve obtained using the Human Total FGF R2 α Standard. These results indicate that O.D. values from this DuoSet IC ELISA can be used to determine the relative concentration of FGF R2 α in natural samples.

SENSITIVITY

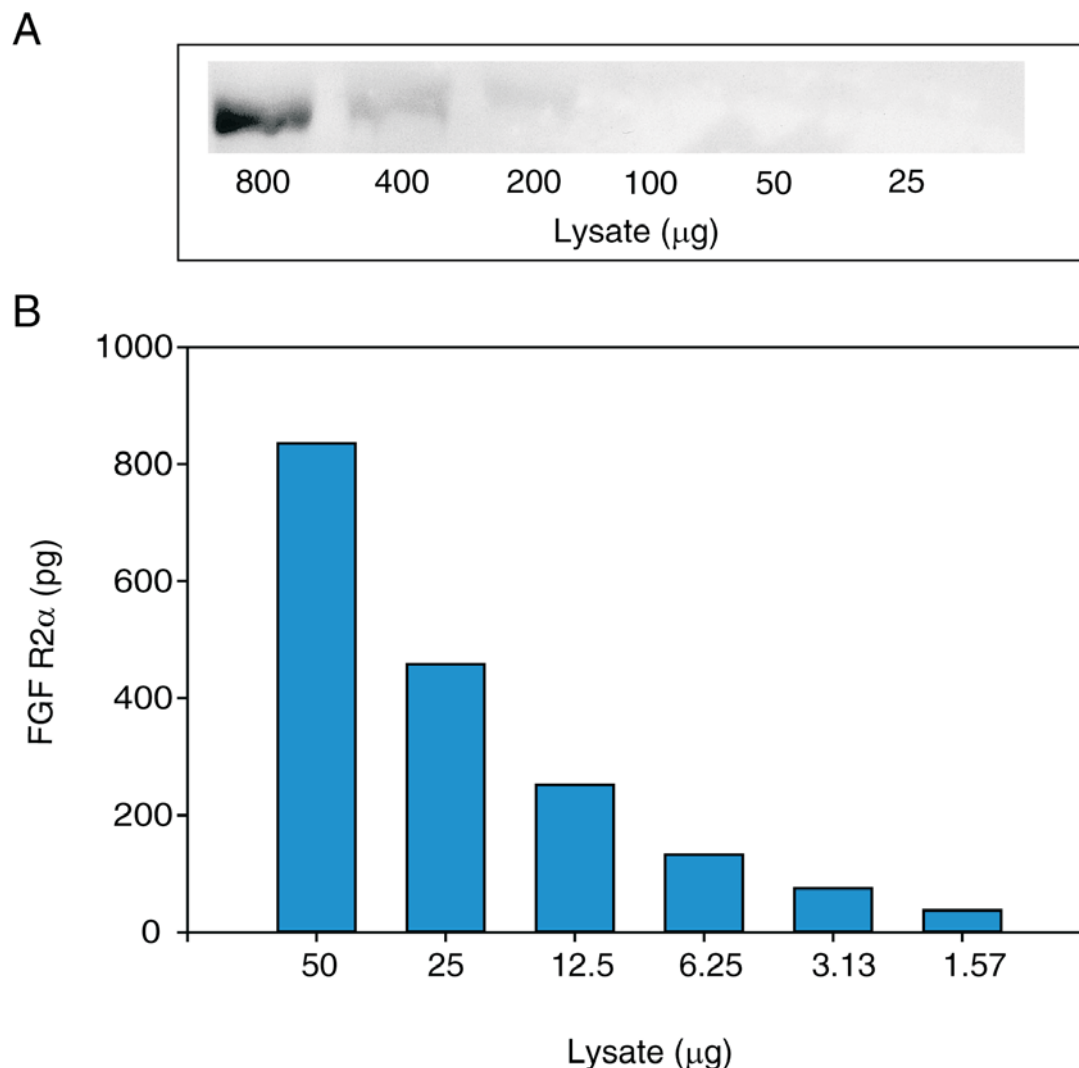


Figure 1: The Human Total FGF R2 α DuoSet IC ELISA is more sensitive than immunoprecipitation (IP)-Western blot analysis. Lysates prepared from the human stomach cancer cell line Kato III were serially diluted and analyzed by **(A)** IP-Western blot and **(B)** this DuoSet IC ELISA. IPs were performed using an anti-FGF R2 α monoclonal antibody and goat anti-mouse agarose. Immunoblots were incubated with a biotinylated anti-FGF R2 α monoclonal antibody. Bands were visualized by chemiluminescent detection. Human FGF R2 α can be detected by the Human Total FGF R2 α DuoSet IC ELISA by using approximately 20 to 40 times less lysate than is needed for a conventional IP-Western blot.

SPECIFICITY

To determine specificity, recombinant human FGF R1 α (IIIb)/Fc Chimera, recombinant human FGF R3 (IIIb)/Fc Chimera, and recombinant human PDGF R β /Fc Chimera were assayed at 400 ng/mL and did not cross-react or interfere in the assay.

PLATE LAYOUT

Use this plate layout as a record of standards and samples assayed.

1								
2								
3								
4								
5								
6								
7								
8								
9								
10								
11								
12								
	A	B	C	D	E	F	G	H

NOTES

NOTES