

DuoSet[®] IC

Human Phospho-Lyn (Y397)

Catalog Number DYC3936-2

DYC3936-5

For the development of sandwich ELISAs to measure Lyn phosphorylated at Y397 in cell lysates.

This package insert must be read in its entirety before using this product.

FOR RESEARCH USE ONLY.

NOT FOR USE IN DIAGNOSTIC PROCEDURES.

TABLE OF CONTENTS

Contents	Page
PRINCIPLE OF THE ASSAY	2
MATERIALS PROVIDED.	2
OTHER MATERIALS REQUIRED	3
SOLUTIONS REQUIRED	3
REAGENT PREPARATION	4
PREPARATION OF SAMPLES.	4
PRECAUTION	5
TECHNICAL HINTS AND LIMITATIONS.	5
GENERAL ELISA PROTOCOL	6
CALCULATION OF RESULTS	7
TYPICAL DATA	7
CALIBRATION.	8
SPECIFICITY	8
QUANTIFICATION	9
PLATE LAYOUT	10

MANUFACTURED AND DISTRIBUTED BY:

R&D Systems, Inc.
614 McKinley Place NE
Minneapolis, MN 55413
United States of America

TELEPHONE: (800) 343-7475
(612) 379-2956
FAX: (612) 656-4400
E-MAIL: info@RnDSystems.com

DISTRIBUTED BY:

R&D Systems Europe, Ltd.
19 Barton Lane
Abingdon Science Park
Abingdon, OX14 3NB
United Kingdom

TELEPHONE: +44 (0)1235 529449
FAX: +44 (0)1235 533420
E-MAIL: info@RnDSystems.co.uk

R&D Systems China Co. Ltd.
24A1 Hua Min Empire Plaza
726 West Yan An Road
Shanghai PRC 200050

TELEPHONE: +86 (21) 52380373
FAX: +86 (21) 52371001
E-MAIL: info@RnDSystemsChina.com.cn

PRINCIPLE OF THE ASSAY

This DuoSet[®] IC ELISA contains the basic components required for the development of sandwich ELISAs to measure Lyn phosphorylated at Y397 in cell lysates. An immobilized capture antibody specific for Lyn (Lck/Yes-related Novel tyrosine kinase) binds both phosphorylated and unphosphorylated protein. After washing away unbound material, a biotinylated detection antibody recognizing Lyn phosphorylated at Y397 is used to detect only the phosphorylated protein, utilizing a standard Streptavidin-HRP format.

MATERIALS PROVIDED

Store the unopened kit at 2 - 8° C. Do not use past kit expiration date.

			Vials Provided	
Description	Part #	Storage Conditions	Cat. # DYC3936-2	Cat. # DYC3936-5
Phospho-Lyn (Y397) Capture Antibody	842300	2 - 8° C	1	2
Phospho-Lyn (Y397) Detection Antibody	842301	2 - 8° C	1	2
Phospho-Lyn (Y397) Standard	842302	2 - 8° C	3	5
Streptavidin-HRP	890803	2 - 8° C	1	1

DYC3936-2 contains sufficient materials to run ELISAs on at least two 96 well plates.*

DYC3936-5 contains sufficient materials to run ELISAs on at least five 96 well plates.*

*Provided the following conditions are met:

- The reagents are prepared as described in this package insert.
- The assay is run as described in the General ELISA Protocol on page 6.
- The recommended microplates, buffers, diluents, substrates, and solutions are used.

OTHER MATERIALS REQUIRED

- Aprotinin (Sigma # A6279)
- Leupeptin (Sigma # L8511)
- Pepstatin (Sigma # P4265)
- Phenylmethylsulfonylfluoride (PMSF) (Sigma # P7626)
- Sodium azide (NaN_3) (Sigma # S2002)
- Sodium fluoride (NaF) (Aldrich # 20115-4)
- Sodium orthovanadate (Na_3VO_4) (Sigma # S6508), activated
- Sodium pyrophosphate ($\text{Na}_4\text{P}_2\text{O}_7$) (Sigma # P8010)
- Triton[®] X-100 (Sigma # T9284)
- Urea
- Pipettes and pipette tips
- Deionized or distilled water
- 96 well microplates [Costar EIA Plates (Catalog # 2592 or R&D Systems Catalog # DY990) are suggested]
- Plate sealers (R&D Systems, Catalog # DY992)
- Squirrt bottle, manifold dispenser, or automated microplate washer.

SOLUTIONS REQUIRED

PBS - 137 mM NaCl, 2.7 mM KCl, 8.1 mM Na_2HPO_4 , 1.5 mM KH_2PO_4 , pH 7.2 - 7.4, 0.2 μm filtered.

Wash Buffer - 0.05% Tween[®] 20 in PBS, pH 7.2 - 7.4 (R&D Systems, Catalog # WA126).

Block Buffer - 1% BSA,* 0.05% NaN_3 , in PBS, pH 7.2 - 7.4.

IC Diluent #1 - 1% BSA* in PBS, pH 7.2 - 7.4, 0.2 μm filtered.

IC Diluent #8** - 1 mM EDTA, 0.5% Triton X-100, 5 mM NaF in PBS, pH 7.2 - 7.4

Note: *IC Diluent #8 is also the base buffer for IC Diluent #3, IC Diluent #7, and Lysis Buffer #6. Approximately 50 mL of this diluent is required to run the assay on one plate.*

IC Diluent #3** - 1 mM EDTA, 0.5% Triton X-100, 5 mM NaF, 1 M urea in PBS, pH 7.2 - 7.4.

IC Diluent #7** - 1 mM EDTA, 0.5% Triton X-100, 5 mM NaF, 6 M urea in PBS, pH 7.2 - 7.4

Lysis Buffer #6** - 1 mM EDTA, 0.5% Triton X-100, 5 mM NaF, 6 M urea, 10 $\mu\text{g}/\text{mL}$ Leupeptin, 10 $\mu\text{g}/\text{mL}$ Pepstatin, 100 μM PMSF, 3 $\mu\text{g}/\text{mL}$ Aprotinin in PBS, 2.5 mM sodium pyrophosphate, 1 mM activated sodium orthovanadate in PBS, pH 7.2 - 7.4.

Substrate Solution - 1:1 mixture of Color Reagent A (H_2O_2) and Color Reagent B (Tetramethylbenzidine) (R&D Systems, Catalog # DY999).

Stop Solution - 2 N H_2SO_4 (R&D Systems, Catalog DY994).

*The use of Reagent Diluent Concentrate 2 (R&D Systems, Catalog # DY995) or Millipore Bovine Serum Albumin, Fraction V, Protease free (Catalog # 82-045) is recommended. All buffers containing BSA must be stored at 2 - 8° C.

**Sample Diluent Concentrate 1 (5X) (R&D Systems, Catalog # DYC001), prepared as describe in the DYC001 insert.

*Triton is a registered trademark of Union Carbide.
Tween is a registered trademark of ICI Americas.*

REAGENT PREPARATION

Bring all reagents to room temperature before use.

Phospho-Lyn (Y397) Capture Antibody (Part 842300) - Each vial contains 720 $\mu\text{g/mL}$ of mouse anti-human Lyn antibody when reconstituted with 200 μL of PBS. After reconstitution, store at 2 - 8° C for up to 30 days or aliquot and store at $\leq -20^\circ\text{C}$ in a manual defrost freezer or at $\leq -70^\circ\text{C}$ for up to 3 months.*

Phospho-Lyn (Y397) Detection Antibody (Part 842301) - Each vial contains 18 $\mu\text{g/mL}$ of biotinylated rabbit anti-human phospho-Lyn antibody when reconstituted with 1.0 mL of IC Diluent #1. After reconstitution, store at 2 - 8° C for up to 30 days or aliquot and store at $\leq -20^\circ\text{C}$ in a manual defrost freezer or at $\leq -70^\circ\text{C}$ for up to 3 months.*

Phospho-Lyn (Y397) Standard (Part 842302) - Each vial contains 90 ng/mL of recombinant human phospho-Lyn when reconstituted with 500 μL of IC Diluent #7. **A fresh standard should be used for each assay. Use within one hour of reconstitution.** An initial 6-fold dilution should be made in IC Diluent #8. Further dilutions should be made in IC Diluent #3 immediately before use. A seven point curve using 2-fold serial dilutions and a high standard of 1000 pg/mL is recommended.

Streptavidin-HRP (Part 890803) - 1.0 mL of streptavidin conjugated to horseradish-peroxidase. Store at 2 - 8° C. **DO NOT FREEZE.**

*Provided this is within the expiration date of the kit.

PREPARATION OF SAMPLES

Cell Lysates - Rinse cells two times with PBS, making sure to remove any remaining PBS after the second rinse. Solubilize cells at 1×10^7 cells/mL in Lysis Buffer #6 and allow samples to sit on ice for 15 minutes. Assay immediately or store at $\leq -70^\circ\text{C}$. Before use, centrifuge samples at 2000 x g for 5 minutes and transfer the supernate to a clean test tube. Sample protein concentration may be quantified using a total protein assay. For assaying, dilute lysates 6-fold with IC Diluent #8 and make further serial dilutions in IC Diluent #3.

Note: *The final concentration of urea in all samples and standards should be 1 M prior to addition to the plate.*

PRECAUTION

The Stop Solution suggested for use with this kit is an acidic solution. Wear protective gloves, clothing, eye, and face protection. Wash hands thoroughly after handling.

TECHNICAL HINTS AND LIMITATIONS

- This DuoSet IC ELISA should not be used beyond the expiration date on the kit label.
- Individual results may vary due to differences in technique, plasticware and water sources.
- It is important that the diluents selected for reconstitution and for dilution of the standard reflect the environment of the samples being measured. The diluent suggested in this protocol should be suitable for most cell lysates.
- The concentrations of capture/detection antibodies used can be varied to create an immunoassay with a different sensitivity and dynamic range. A basic understanding of immunoassay development is required for the successful use of these reagents in immunoassays.
- A thorough and consistent wash technique is essential for proper assay performance. Wash Buffer should be dispensed forcefully and removed completely from the wells by aspiration or decanting. Remove any remaining Wash Buffer by inverting the plate and blotting it against clean paper towels.
- Use a fresh reagent reservoir and pipette tips for each step.
- It is recommended that all standards and samples be assayed in duplicate.
- Avoid microbial contamination of reagents and buffers. This may interfere with the sensitivity of the assay. Buffers containing protein should be made under aseptic conditions and stored at 2 - 8° C or be prepared fresh daily.

GENERAL ELISA PROTOCOL

A plate layout is provided to record standards and samples assayed.

Plate Preparation

1. Dilute the Capture Antibody to a working concentration of 4.0 $\mu\text{g}/\text{mL}$ in PBS, without carrier protein. Immediately coat a 96 well microplate with 100 μL per well of the diluted Capture Antibody. Seal the plate and incubate overnight at room temperature.
2. Aspirate each well and wash with Wash Buffer, repeating the process two times for a total of 3 washes. Wash by filling each well with Wash Buffer (400 μL) using a squirt bottle, manifold dispenser, or autowasher. Complete removal of liquid at each step is essential for good performance. After the last wash, remove any remaining Wash Buffer by aspirating or by inverting the plate and blotting it against clean paper towels.
3. Block plates by adding 300 μL of Block Buffer to each well. Incubate at room temperature for 1 - 2 hours.
4. Repeat the aspiration/wash as in step 2. The plates are now ready for sample addition.

Assay Procedure

1. Add 100 μL of sample or standards in IC Diluent #3 per well. Use IC Diluent #3 as the zero standard. Cover with a plate sealer and incubate 2 hours at room temperature.
Note: *A seven point standard curve using 2-fold serial dilutions and a high standard of 1000 pg/mL is recommended.*
2. Repeat the aspiration/wash as in step 2 of Plate Preparation.
3. Dilute the Detection Antibody to a working concentration of 500 ng/mL in IC Diluent #1 before use. Add 100 μL of the diluted Detection Antibody to each well. Cover with a new plate sealer and incubate 2 hours at room temperature.
4. Repeat the aspiration/wash as in step 2 of Plate Preparation.
5. Immediately before use, dilute the Streptavidin-HRP to the working concentration specified on the vial label using IC Diluent #1. Add 100 μL of the diluted Streptavidin-HRP to each well. Incubate for 20 minutes at room temperature. Avoid placing the plate in direct light.
6. Repeat the aspiration/wash as in step 2 of the Plate Preparation.
7. Add 100 μL of Substrate Solution to each well. Incubate for 20 minutes at room temperature. Avoid placing the plate in direct light.
8. Add 50 μL of Stop Solution to each well. Gently tap the plate to ensure thorough mixing.
9. Determine the optical density of each well immediately, using a microplate reader set to 450 nm. If wavelength correction is available, set to 540 nm or 570 nm. If wavelength correction is not available, subtract readings at 540 nm or 570 nm from the readings at 450 nm. This subtraction will correct for optical imperfections in the plate. Readings made directly at 450 nm without correction may be higher and less accurate.

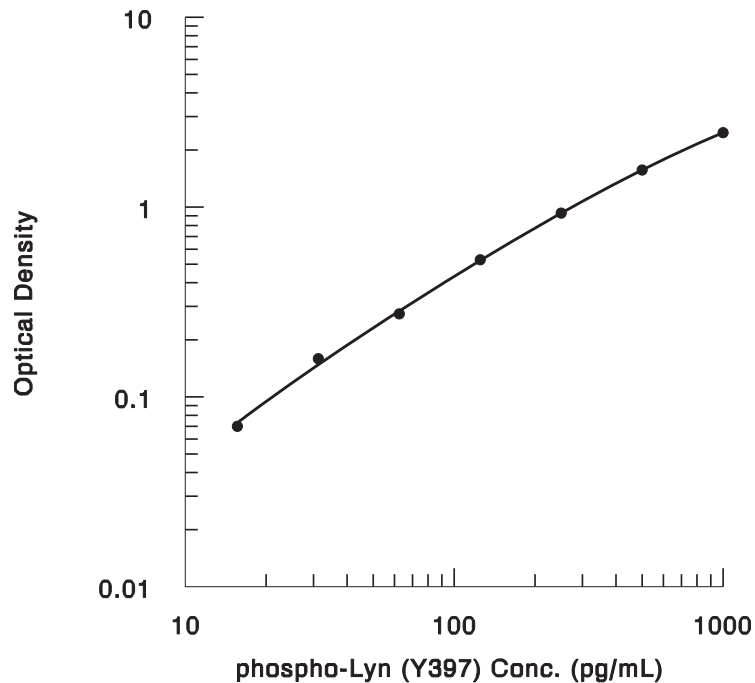
CALCULATION OF RESULTS

Average the duplicate readings for each standard and sample and subtract the average zero standard optical density. Results may be normalized to total protein or cell number.

Create a standard curve by reducing the data using computer software capable of generating a four parameter logistic (4-PL) curve-fit. As an alternative, construct a standard curve by plotting the mean absorbance for each standard on the y-axis against the concentration on the x-axis and draw a best fit curve through the points on the graph. The data may be linearized by plotting the log of the phospho-Lyn (Y397) concentrations versus the log of the O.D. and the best fit line can be determined by regression analysis. This procedure will produce an adequate but less precise fit of the data.

TYPICAL DATA

A standard curve should be generated for each set of samples assayed. The graph below represents typical data generated when using this Human Phospho-Lyn (Y397) DuoSet IC ELISA. The standard curve was calculated using a computer generated 4-PL curve-fit. This standard curve is for demonstration purposes only.



CALIBRATION

This DuoSet IC ELISA is calibrated against a highly purified *E. coli*-expressed recombinant human phospho-Lyn (Y397) produced at R&D Systems.

SPECIFICITY

The Human Phospho-Lyn (Y397) DuoSet IC ELISA specifically recognizes Lyn phosphorylated at Y397. Specificity was demonstrated using both peptide competition and cross-reactivity analysis.

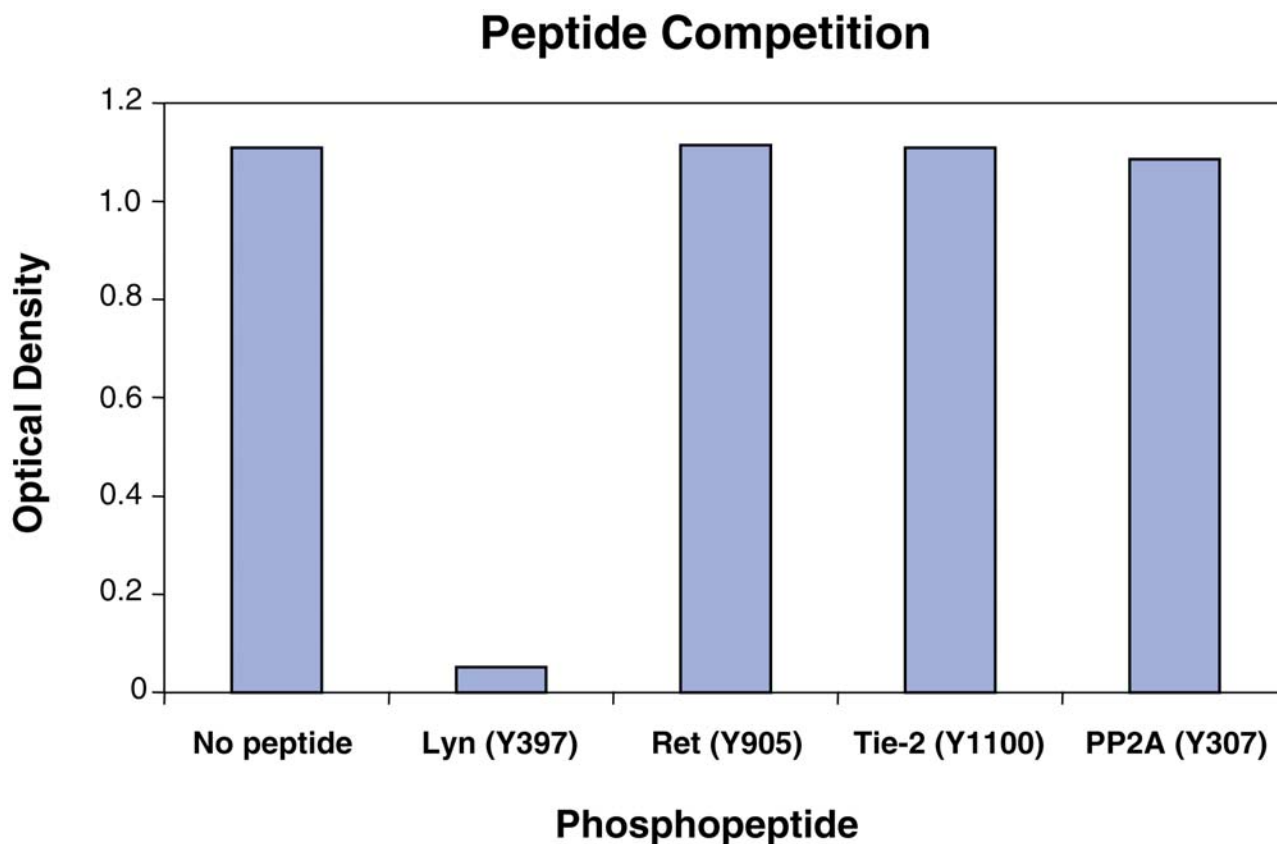


Figure 1: A lysate prepared from Ramos human Burkitt's lymphoma cells treated with 100 μ M sodium pervanadate for 60 minutes was analyzed with this ELISA. The Phospho-Lyn (Y397) Detection Antibody was either untreated (no peptide) or incubated with phosphopeptide containing either the Lyn (Y397), Ret (Y905), Tie-2 (Y1100), or PP2A (Y307) phosphorylation sites. Peptides were used at 40 ng/mL. Only the phosphopeptide containing the Lyn Y397 phosphorylation site blocked the signal, indicating that the ELISA is specific for Lyn (Y397) phosphorylation.

Cross-reactivity experiments were performed with the Human Phospho-Lyn (Y397) DuoSet IC ELISA to further determine specificity. Phosphorylated recombinant human (rh) Phospho-Fgr, rhPhospho-Fyn (Y420), rhPhospho-Src (Y419), and rhPhospho-Yes (Y426) were assayed at 50 ng/mL and did not cross-react or interfere in the assay or interfere with the capture antibody. Unphosphorylated recombinant human Lyn was assayed at 50 ng/mL and did not cross-react or interfere.

QUANTIFICATION

Amounts of human phosphorylated Lyn, as quantified by the Phospho-Lyn (Y397) DuoSet IC ELISA, are consistent with the relative amounts of phosphorylated Lyn determined by qualitative Western blot analysis.

Quantification of phosphorylated Lyn (Y397) in pervanadate-treated human Ramos cells

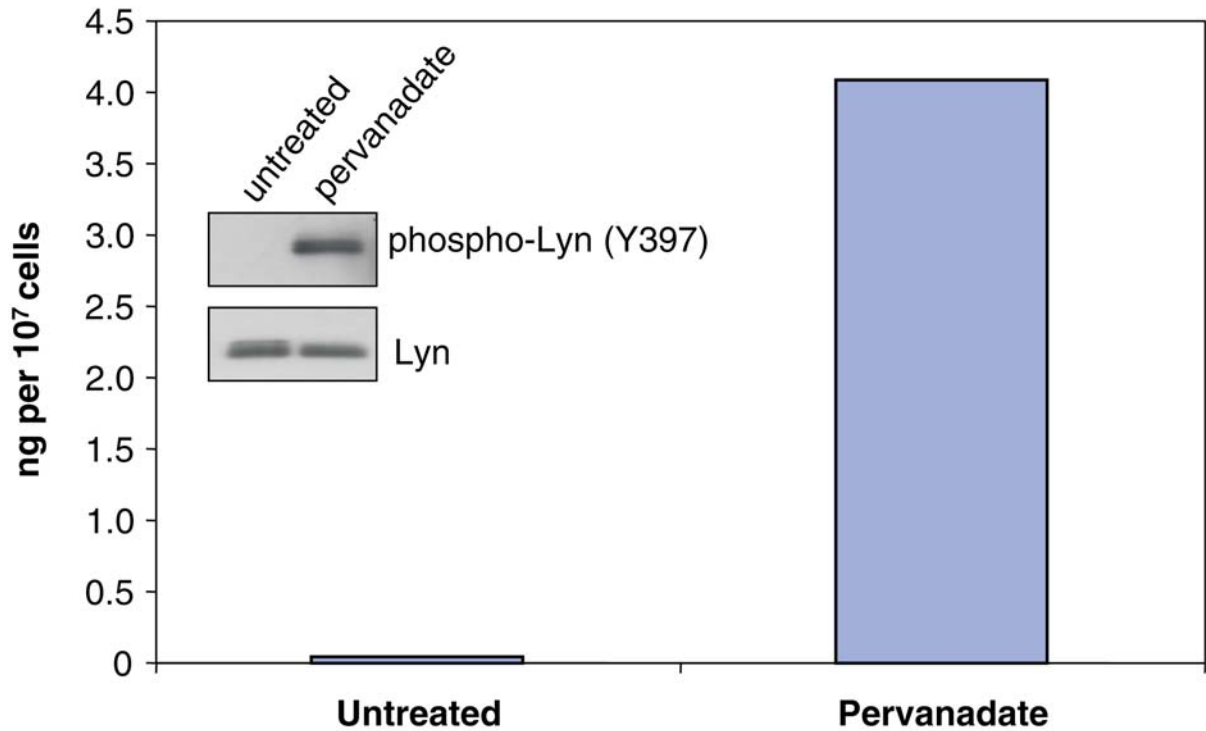


Figure 2: Lysates prepared from Ramos human Burkitt's lymphoma cells were either untreated or treated with 100 μ M sodium pervanadate for 60 minutes and quantified with this DuoSet IC ELISA. Duplicate lysates were immunoprecipitated with anti-Lyn polyclonal antibody (R&D Systems, Catalog # AF3206) and immunoblotted (inset) with either the detection antibody used in this kit or anti-Lyn polyclonal antibody. The DuoSet IC ELISA results correlate well with the relative amounts of phosphorylated Lyn detected by IP/Western blot.

PLATE LAYOUT

Use this plate layout as a record of standards and samples assayed.

1								
2								
3								
4								
5								
6								
7								
8								
9								
10								
11								
12								
	A	B	C	D	E	F	G	H

NOTES