

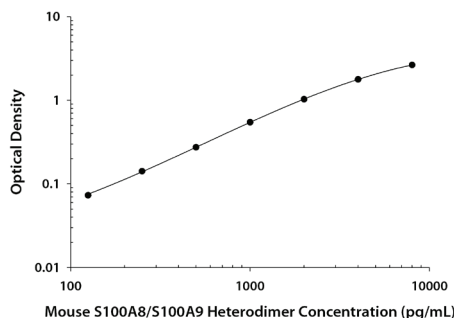
## CALCULATION OF RESULTS

Average the duplicate readings for each standard, control, and sample and subtract the average zero standard optical density (O.D.).

Create a standard curve by reducing the data using computer software capable of generating a four parameter logistic (4-PL) curve-fit. As an alternative, construct a standard curve by plotting the mean absorbance for each standard on the y-axis against the concentration on the x-axis and draw a best fit curve through the points on the graph. The data may be linearized by plotting the log of the mouse S100A8/S100A9 Heterodimer concentrations versus the log of the O.D. and the best fit line can be determined by regression analysis. This procedure will produce an adequate but less precise fit of the data. If samples have been diluted, the concentration read from the standard curve must be multiplied by the dilution factor.

## TYPICAL DATA

This standard curve is only for demonstration purposes. A standard curve should be generated for each set of samples assayed.



## SPECIFICITY

The following factors prepared at 50 ng/mL were assayed and exhibited no cross-reactivity or interference.

### Recombinant mouse:

RAGE/Fc Chimera  
S100A4  
S100A8  
S100A9  
S100A13  
TLR-4/Fc Chimera

### Recombinant human:

S100A8/S100A9 Heterodimer

## TECHNICAL HINTS & LIMITATIONS

- We recommend the use of R&D Systems' Reagent Diluent Concentrate 2 (Catalog # DY995) to prepare Block Buffer for use in this assay.
- If assaying sample types other than cell culture supernates, each laboratory should develop and validate its own diluent. The diluent must not be used to dilute the Detection Antibody or the Streptavidin-HRP.
- It is important that the Reagent Diluent selected for reconstitution and dilution of the standard reflects the environment of the samples being measured.
- Avoid microbial contamination of reagents and buffers.
- A thorough and consistent wash technique is essential for proper assay performance. Wash Buffer should be dispensed forcefully and removed completely from the wells by aspiration or decanting. Remove any remaining Wash Buffer by inverting the plate and blotting it against clean paper towels.
- Individual results may vary due to differences in technique, plasticware and water sources.
- It is recommended that all standards and samples be assayed in duplicate.
- The use of PBS from tablets may interfere in this assay.

## TROUBLESHOOTING

**Note:** For more detailed troubleshooting, please visit: [www.RnDSystems.com/ELISADevelopment](http://www.RnDSystems.com/ELISADevelopment)

### Poor Standard Curve

- Impure BSA used for Block Buffer preparation.
- Improper reconstitution and/or storage of standard.
- Improper dilution of highest standard and standard curve.
- Incomplete washing and/or aspiration of wells.
- Unequal volumes added to wells/pipetting error.
- Incorrect incubation times or temperatures.

### Poor Precision

- Unequal volumes added to wells/pipetting error.
- Incomplete washing and/or aspiration of wells.
- Unequal mixing of reagents.

### Low or No Color Development

- Inadequate volume of substrate added to wells.
- Incorrect incubation times or temperatures.
- Impure BSA used for Block Buffer preparation.

## Mouse S100A8/S100A9 Heterodimer

Catalog Number: DY8596-05 (5 plates)

## INTENDED USE

For the development of sandwich ELISAs to measure natural and recombinant mouse S100 Calcium Binding Protein A8 and S100 Calcium Binding Protein A9 Heterodimer (S100A8/S100A9 Heterodimer). The Reagent Diluent recommended may be suitable for most cell culture supernate, serum, and plasma samples. The Reagent Diluent selected for use can alter the performance of an immunoassay. Reagent Diluent optimization for samples with complex matrices such as serum and plasma, may improve their performance in this assay.

This kit contains sufficient materials to run ELISAs on at least five 96 well plates, provided the following conditions are met:

- The reagents are prepared as described in this package insert.
- The assay is run as described in the General ELISA Protocol.
- The recommended microplates, buffers, diluents, substrates, and solutions are used.

This package insert must be read in its entirety before using this product. Refer to the Certificate of Analysis for component concentrations as they may vary. For research use only. Not for use in diagnostic procedures.

### MANUFACTURED AND DISTRIBUTED BY:

#### USA & Canada | R&D Systems, Inc.

614 McKinley Place NE, Minneapolis, MN 55413, USA  
TEL: (800) 343-7475 (612) 379-2956 FAX: (612) 656-4400  
E-MAIL: [info@RnDSystems.com](mailto:info@RnDSystems.com)

### DISTRIBUTED BY:

#### UK & Europe | R&D Systems Europe, Ltd.

19 Barton Lane, Abingdon Science Park, Abingdon OX14 3NB, UK  
TEL: +44 (0)1235 529449 FAX: +44 (0)1235 533420  
E-MAIL: [info@RnDSystems.co.uk](mailto:info@RnDSystems.co.uk)

### China | R&D Systems China Co., Ltd.

24A1 Hua Min Empire Plaza, 726 West Yan An Road, Shanghai PRC 200050  
TEL: +86 (21) 52380373 FAX: +86 (21) 52371001  
E-MAIL: [info@RnDSystemsChina.com.cn](mailto:info@RnDSystemsChina.com.cn)

## OTHER MATERIALS & SOLUTIONS REQUIRED

**96 well microplates:** (R&D Systems, Catalog # DY990).

**Plate Sealers:** (R&D Systems, Catalog # DY992).

**PBS:** 137 mM NaCl, 2.7 mM KCl, 8.1 mM Na<sub>2</sub>HPO<sub>4</sub>, 1.5 mM KH<sub>2</sub>PO<sub>4</sub>, pH 7.2-7.4, 0.2 μm filtered (R&D Systems, Catalog # DY006).

**Wash Buffer:** 0.05% Tween® 20 in PBS, pH 7.2-7.4 (R&D Systems, Catalog # WA126).

**Block Buffer:** 1% BSA in PBS, pH 7.2-7.4, 0.2 μm filtered (R&D Systems, Catalog # DY995).

**Quality of BSA is critical (see Technical Hints).**

**Reagent Diluent:** 50 mM Tris, 10 mM CaCl<sub>2</sub>, 0.15 M NaCl, 0.05% Brij® 35, pH 7.45-7.55, 0.2 μm filtered.

**Substrate Solution:** 1:1 mixture of Color Reagent A (H<sub>2</sub>O<sub>2</sub>) and Color Reagent B (Tetramethylbenzidine) (R&D Systems, Catalog # DY999).

**Stop Solution:** 2 N H<sub>2</sub>SO<sub>4</sub> (R&D Systems, Catalog # DY994).

## PRECAUTIONS

Some components in this kit contain a preservative which may cause an allergic skin reaction. Avoid breathing mist.

The Stop Solution suggested for use with this kit is an acid solution.

The Color Reagent B suggested for use with this kit may cause skin, eye, and respiratory irritation. Avoid breathing fumes.

Wear protective gloves, clothing, eye, and face protection. Wash hands thoroughly after handling. Please refer to the MSDS on our website prior to use.

## CALIBRATION

This DuoSet is calibrated against a highly purified *E. coli*-expressed recombinant mouse S100A8/S100A9 Heterodimer produced at R&D Systems.

## MATERIALS PROVIDED & STORAGE CONDITIONS

Store the unopened kit at 2-8 °C. Do not use past kit expiration date.

DESCRIPTION	PART #	# VIALS	STORAGE OF OPENED/ RECONSTITUTED MATERIAL
Mouse S100A8/S100A9 Heterodimer Capture Antibody	844449	1 vial	Refer to the lot-specific Certificate of Analysis (C of A) for storage conditions.
Mouse S100A8/S100A9 Heterodimer Detection Antibody	844450	1 vial	
Mouse S100A8/S100A9 Heterodimer Standard	844451	2 vials	
Streptavidin-HRP	893975	1 vial	

## REAGENT PREPARATION

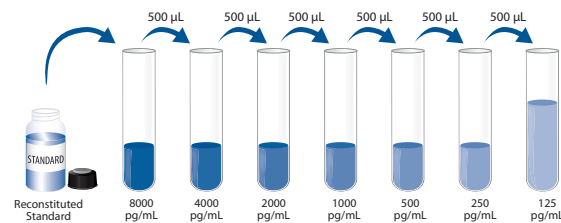
**Bring all reagents to room temperature before use. Allow all components to sit for a minimum of 15 minutes with gentle agitation after initial reconstitution. Working dilutions should be prepared and used immediately.**

**Streptavidin-HRP:** 2.0 mL of streptavidin conjugated to horseradish-peroxidase. Dilute to the working concentration specified on the vial label using Reagent Diluent.

**Rat Anti-Mouse S100A8/S100A9 Heterodimer Capture Antibody:** Refer to the lot-specific C of A for amount supplied. Reconstitute each vial with 0.5 mL of PBS. Dilute in PBS without carrier protein to the working concentration indicated on the C of A.

**Biotinylated Goat Anti-Mouse S100A8/S100A9 Heterodimer Detection Antibody:** Refer to the lot-specific C of A for amount supplied. Reconstitute each vial with 1.0 mL of Reagent Diluent. Dilute in Reagent Diluent to the working concentration indicated on the C of A.

**Recombinant Mouse S100A8/S100A9 Heterodimer Standard:** Refer to the lot-specific C of A for amount supplied. Reconstitute each vial with 0.5 mL of deionized or distilled water. A seven point standard curve using 2-fold serial dilutions in Reagent Diluent is recommended. Prepare 1000 μL of high standard per plate assayed at the concentration indicated on the C of A.



All trademarks and registered trademarks are the property of their respective owners.

## GENERAL ELISA PROTOCOL

### Plate Preparation

1. Dilute the Capture Antibody to the working concentration in PBS without carrier protein. Immediately coat a 96-well microplate with 100 μL per well of the diluted Capture Antibody. Seal the plate and incubate overnight at room temperature.
2. Aspirate each well and wash with Wash Buffer, repeating the process two times for a total of three washes. Wash by filling each well with Wash Buffer (400 μL) using a squirt bottle, manifold dispenser, or autowasher. Complete removal of liquid at each step is essential for good performance. After the last wash, remove any remaining Wash Buffer by aspirating or by inverting the plate and blotting it against clean paper towels.
3. Block plates by adding 300 μL of Block Buffer to each well. Incubate at room temperature for a minimum of 1 hour.
4. Repeat the aspiration/wash as in step 2. The plates are now ready for sample addition.

### Assay Procedure

1. Add 100 μL of sample or standards in Reagent Diluent, or an appropriate diluent, per well. Cover with an adhesive strip and incubate 2 hours at room temperature.
2. Repeat the aspiration/wash as in step 2 of Plate Preparation.
3. Add 100 μL of the Detection Antibody, diluted in Reagent Diluent, to each well. Cover with a new adhesive strip and incubate 2 hours at room temperature.
4. Repeat the aspiration/wash as in step 2 of Plate Preparation.
5. Add 100 μL of the working dilution of Streptavidin-HRP to each well. Cover the plate and incubate for 20 minutes at room temperature. Avoid placing the plate in direct light.
6. Repeat the aspiration/wash as in step 2.
7. Add 100 μL of Substrate Solution to each well. Incubate for 20 minutes at room temperature. Avoid placing the plate in direct light.
8. Add 50 μL of Stop Solution to each well. Gently tap the plate to ensure thorough mixing.
9. Determine the optical density of each well immediately, using a microplate reader set to 450 nm. If wavelength correction is available, set to 540 nm or 570 nm. If wavelength correction is not available, subtract readings at 540 nm or 570 nm from the readings at 450 nm. This subtraction will correct for optical imperfections in the plate. Readings made directly at 450 nm without correction may be higher and less accurate.