

DESCRIPTION

Species Reactivity	Human
Specificity	This antibody stains COS cells transfected with cDNA for human E-Selectin/CD62E in immunofluorescence experiments. This antibody does not stain COS cells transfected with cDNA for human ICAM-1, PECAM-1 or VCAM-1.
Source	Monoclonal Mouse IgG ₁ Clone # BBIG-E5
Purification	Protein A or G purified from hybridoma culture supernatant
Immunogen	Activated HUVEC human umbilical vein endothelial cells
Formulation	Lyophilized from a 0.2 µm filtered solution in PBS with BSA as a carrier protein. See Certificate of Analysis for details.

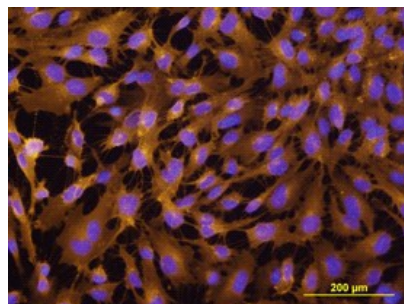
APPLICATIONS

Please Note: Optimal dilutions should be determined by each laboratory for each application. General Protocols are available in the Technical Information section on our website.

	Recommended Concentration	Sample
Western Blot	1 µg/mL	Recombinant Human E-Selectin/CD62E Fc Chimera (Catalog # 724-ES) under non-reducing conditions only
Immunocytochemistry	8-25 µg/mL	See Below
Human E-Selectin/CD62E Sandwich Immunoassay		Reagent
ELISA Capture	2-8 µg/mL	Human E-Selectin/CD62E Antibody (Catalog # BBA2)
ELISA Capture	2-10 µg/mL	Human E-Selectin/CD62E Antibody (Catalog # BBA16)
ELISA Detection	0.5-2.0 µg/mL	Human E-Selectin/CD62E Biotinylated Antibody (Catalog # BBA8)
Standard		Recombinant Human E-Selectin/CD62E (Catalog # ADP1)

DATA

Immunocytochemistry



E-Selectin/CD62E in HUVEC Cells. E-Selectin/CD62E was detected in immersion fixed human umbilical vein endothelial cells (HUVECs) activated with TNF alpha using Mouse Anti-Human E-Selectin/CD62E Biotinylated Monoclonal Antibody (Catalog # BBA8) at 10 µg/mL for 3 hours at room temperature. Cells were stained using the NorthernLights™ 557-conjugated Anti-Mouse IgG Secondary Antibody (yellow; Catalog # NL007) and counterstained with DAPI (blue). View our protocol for [Fluorescent ICC Staining of Cells on Coverslips](#).

PREPARATION AND STORAGE

Reconstitution	Sterile PBS to a final concentration of 0.5 mg/mL.
Shipping	The product is shipped at ambient temperature. Upon receipt, store it immediately at the temperature recommended below.
Stability & Storage	<p>Use a manual defrost freezer and avoid repeated freeze-thaw cycles.</p> <ul style="list-style-type: none"> ● 12 months from date of receipt, -20 to -70 °C as supplied. ● 1 month, 2 to 8 °C under sterile conditions after reconstitution. ● 6 months, -20 to -70 °C under sterile conditions after reconstitution.

BACKGROUND

E-Selectin, also known as Endothelial Leukocyte Adhesion Molecule 1 (ELAM-1), and Leukocyte-Endothelial Cell Adhesion Molecule 2 (LECAM-2), has been designated CD62E. It is a cell-surface glycoprotein expressed by activated endothelium and it mediates the adhesion of blood neutrophils.