

DESCRIPTION

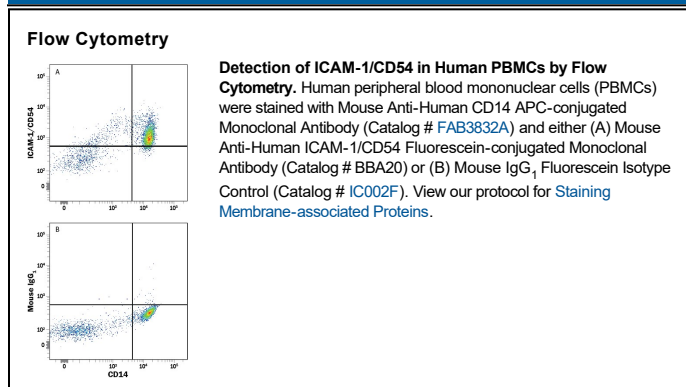
Species Reactivity	Human
Specificity	Stains human ICAM-1/CD54 on human ICAM-1 transfected COS cells. It does not bind COS cells transfected with E-Selectin, VCAM-1, or PECAM-1.
Source	Monoclonal Mouse IgG ₁ Clone # BBIG-I1 (11C81)
Purification	Protein A or G purified from hybridoma culture supernatant
Immunogen	Activated HUVEC human umbilical vein endothelial cells
Conjugate	Fluorescein Excitation Wavelength: 488 nm Emission Wavelength: 515-545 nm (FITC)
Formulation	Supplied in a saline solution containing BSA and Sodium Azide. See Certificate of Analysis for details. *Contains <0.1% Sodium Azide, which is not hazardous at this concentration according to GHS classifications. Refer to the Safety Data Sheet (SDS) for additional information and handling instructions.

APPLICATIONS

Please Note: Optimal dilutions should be determined by each laboratory for each application. *General Protocols* are available in the *Technical Information* section on our website.

	Recommended Concentration	Sample
Flow Cytometry	10 μ L/10 ⁶ cells	See Below

DATA



PREPARATION AND STORAGE

Shipping	The product is shipped with polar packs. Upon receipt, store it immediately at the temperature recommended below.
Stability & Storage	Protect from light. Do not freeze. <ul style="list-style-type: none"> ● 12 months from date of receipt, 2 to 8 °C as supplied.

BACKGROUND

ICAM-1 is a member of the immunoglobulin superfamily whose expression is up-regulated on leukocytes, epithelial cells and resting endothelial cells in response to inflammatory signals. ICAM-1 binds the leukocyte integrins LFA-1 and Mac-1.