

DESCRIPTION

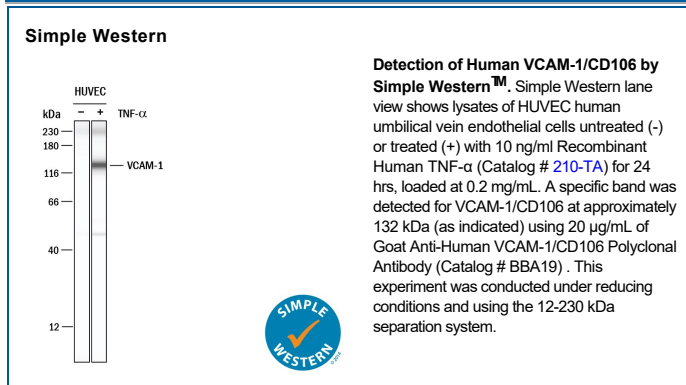
Species Reactivity	Human
Specificity	Detects VCAM-1/CD106 in Western blots. VCAM-1/CD106 has been screened using CHO cells transfected with cDNAs for ICAM-1 and VCAM-1.
Source	Polyclonal Goat Serum
Purification	N/A
Immunogen	Chinese hamster ovary cell line CHO-derived recombinant human VCAM-1
Formulation	Lyophilized from a 0.2 µm filtered solution in Serum. See Certificate of Analysis for details.

APPLICATIONS

Please Note: Optimal dilutions should be determined by each laboratory for each application. *General Protocols* are available in the *Technical Information* section on our website.

	Recommended Concentration	Sample
Western Blot	1:1000 dilution	Recombinant Human VCAM-1/CD106 (Catalog # 809-VR)
Immunohistochemistry	1:200 dilution	Immersion fixed paraffin-embedded sections of human kidney subjected to Antigen Retrieval Reagent-Basic (Catalog # CTS013)
Simple Western	20 µg/mL	HUVEC human umbilical vein endothelial cells

DATA



PREPARATION AND STORAGE

Reconstitution	Reconstitute in 0.5 mL of sterile water.
Shipping	The product is shipped at ambient temperature. Upon receipt, store it immediately at the temperature recommended below.
Stability & Storage	<p>Use a manual defrost freezer and avoid repeated freeze-thaw cycles.</p> <ul style="list-style-type: none"> • 12 months from date of receipt, -20 to -70 °C as supplied. • 1 month, 2 to 8 °C under sterile conditions after reconstitution. • 6 months, -20 to -70 °C under sterile conditions after reconstitution.

BACKGROUND

Vascular cell adhesion molecule (VCAM-1) is expressed on the surface of activated endothelial cells and macrophages. It binds to leukocyte integrins VLA-4 and α4 β7 to promote leukocyte adhesion at sites of inflamed vasculature.