

DESCRIPTION

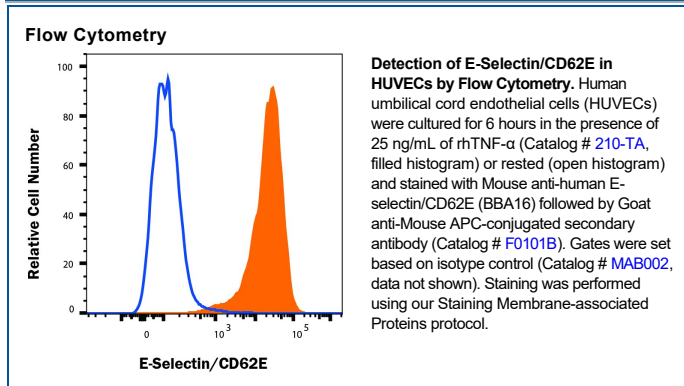
Species Reactivity	Human
Specificity	Detects E-Selectin/CD62E in ELISAs and Western blots. In immunofluorescence experiments, does not stain COS cells transfected with cDNA for human ICAM-1, PECAM-1, L-Selectin, P-Selectin, or VCAM-1.
Source	Monoclonal Mouse IgG ₁ Clone # BBIG-E4
Purification	Protein A or G purified from hybridoma culture supernatant
Immunogen	Activated HUVEC human umbilical vein endothelial cells
Endotoxin Level	<0.10 EU per 1 µg of the antibody by the LAL method.
Formulation	Lyophilized from a 0.2 µm filtered solution in PBS with Trehalose. See Certificate of Analysis for details.

APPLICATIONS

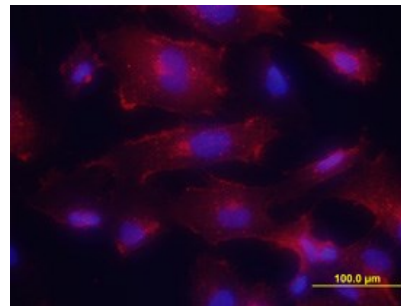
Please Note: Optimal dilutions should be determined by each laboratory for each application. *General Protocols* are available in the *Technical Information* section on our website.

	Recommended Concentration	Sample
Western Blot	1 µg/mL	Recombinant Human E-Selectin/CD62E Fc Chimera (Catalog # 724-ES) under non-reducing conditions only
Flow Cytometry	0.25 µg/10 ⁶ cells	Human umbilical cord endothelial cells (HUVECs) cultured for 6 hours in the presence of 25 ng/mL of rhTNF-α (Catalog # 210-TA)
Immunocytochemistry	8-25 µg/mL	See Below
Immunohistochemistry	8-25 µg/mL	See Below
Human E-Selectin/CD62E Sandwich Immunoassay		Reagent
ELISA Capture	2-10 µg/mL	Human E-Selectin/CD62E Antibody (Catalog # BBA16)
ELISA Detection	0.5-2.0 µg/mL	Human E-Selectin/CD62E Biotinylated Antibody (Catalog # BBA8)
Standard		Recombinant Human E-Selectin/CD62E (Catalog # ADP1)
Immunoprecipitation	Pigott, R. <i>et al.</i> (1991) <i>J. Immunol.</i> 147 :130.	

DATA

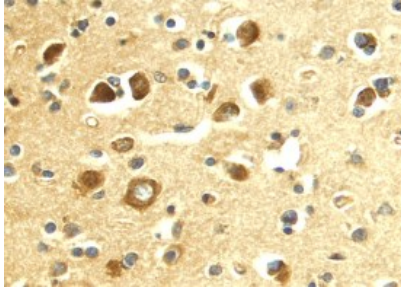


Immunocytochemistry



E-Selectin/CD62E in HUVEC Human Cells. E-Selectin/CD62E was detected in immersion fixed HUVEC human umbilical vein endothelial cells activated with TNF-α (Catalog # 210-TA-010) using Mouse Anti-Human E-Selectin/CD62E Monoclonal Antibody (Catalog # BBA16) at 10 µg/mL for 3 hours at room temperature. Cells were stained using the NorthernLights™ 557-conjugated Anti-Mouse IgG Secondary Antibody (red; Catalog # Catalog # NL007) and counterstained with DAPI (blue). View our protocol for [Fluorescent ICC Staining of Cells on Coverslips](#).

Immunohistochemistry



E-Selectin/CD62E in Human Brain. E-Selectin/CD62E was detected in immersion fixed paraffin-embedded sections of human brain (occipital cortex) using 10 µg/mL Mouse Anti-Human E-Selectin/CD62E Monoclonal Antibody (Catalog # BBA16) overnight at 4 °C. Before incubation with the primary antibody tissue was subjected to heat-induced epitope retrieval using Antigen Retrieval Reagent-Basic (Catalog # Catalog # CTS013). Tissue was stained with the Anti-Mouse HRP-DAB Cell & Tissue Staining Kit (brown; Catalog # Catalog # CTS002) and counterstained with hematoxylin (blue). View our protocol for [Chromogenic IHC Staining of Paraffin-embedded Tissue Sections](#).

PREPARATION AND STORAGE

Reconstitution	Sterile PBS to a final concentration of 0.5 mg/mL.
Shipping	The product is shipped at ambient temperature. Upon receipt, store it immediately at the temperature recommended below.
Stability & Storage	<p>Use a manual defrost freezer and avoid repeated freeze-thaw cycles.</p> <ul style="list-style-type: none"> • 12 months from date of receipt, -20 to -70 °C as supplied. • 1 month, 2 to 8 °C under sterile conditions after reconstitution. • 6 months, -20 to -70 °C under sterile conditions after reconstitution.

BACKGROUND

E-Selectin, also known as Endothelial Leukocyte Adhesion Molecule 1 (ELAM-1), and Leukocyte-Endothelial Cell Adhesion Molecule 2 (LECAM-2), has been designated CD62E. It is a cell-surface glycoprotein expressed by activated endothelium and it mediates the adhesion of blood neutrophils.