

## DESCRIPTION

<b>Species Reactivity</b>	Human
<b>Specificity</b>	Detects human ICAM-3/CD50 in ELISAs and Western blots. ICAM-3/CD50 was found not to recognize COS cells expressing the human ICAM-1 protein. The epitope for ICAM-3/CD50 has been found to be located on domain 1, or the interface between domains 1 and 2 of the human ICAM-3/CD50 molecule.
<b>Source</b>	Monoclonal Mouse IgG <sub>1</sub> Clone # ICAM-3.3
<b>Purification</b>	Protein A or G purified from hybridoma culture supernatant
<b>Immunogen</b>	Recombinant human ICAM-3 Fc Chimera
<b>Formulation</b>	Lyophilized from a 0.2 µm filtered solution in PBS with Trehalose. See Certificate of Analysis for details.

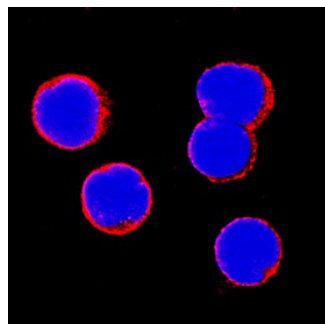
## APPLICATIONS

**Please Note:** Optimal dilutions should be determined by each laboratory for each application. [General Protocols](#) are available in the Technical Information section on our website.

	<b>Recommended Concentration</b>	<b>Sample</b>
<b>Western Blot</b>	1 µg/mL	Recombinant Human ICAM-3/CD50 Fc Chimera (Catalog # <a href="#">715-1C</a> )
<b>Flow Cytometry</b>	0.25 µg/10 <sup>6</sup> cells	Human peripheral blood monocytes
<b>Human ICAM-3/CD50 Sandwich Immunoassay</b>		<b>Reagent</b>
<b>ELISA Capture</b>	2-8 µg/mL	Human ICAM-3/CD50 Antibody (Catalog # <a href="#">BBA15</a> )
<b>ELISA Detection</b>	0.1-0.4 µg/mL	Human ICAM-3/CD50 Biotinylated Antibody (Catalog # <a href="#">BAF813</a> )
<b>Standard</b>		Recombinant Human ICAM-3/CD50 Fc Chimera (Catalog # <a href="#">715-1C</a> )
<b>CyTOF-ready</b>	Ready to be labeled using established conjugation methods. No BSA or other carrier proteins that could interfere with conjugation.	
<b>Immunocytochemistry</b>	Cattoretti, G. <i>et al.</i> (1992) J. Pathol. <b>168</b> :357.	
<b>Immunoprecipitation</b>	Vazeux, R. <i>et al.</i> (1992) Nature <b>360</b> :485.	

## DATA

### Immunocytochemistry



#### ICAM-3/CD50 in Human PBMCs.

ICAM-3/CD50 was detected in immersion fixed human peripheral blood mononuclear cells (PBMCs) using Mouse Anti-Human ICAM-3/CD50 Monoclonal Antibody (Catalog # BBA15) at 15 µg/mL for 3 hours at room temperature. Cells were stained using the NorthernLights™ 557-conjugated Anti-Mouse IgG Secondary Antibody (red; Catalog # NL007) and counterstained with DAPI (blue). Specific staining was localized to cell surfaces. View our protocol for [Fluorescent ICC Staining of Non-adherent Cells](#).

## PREPARATION AND STORAGE

<b>Reconstitution</b>	Sterile PBS to a final concentration of 0.5 mg/mL.
<b>Shipping</b>	The product is shipped at ambient temperature. Upon receipt, store it immediately at the temperature recommended below.
<b>Stability &amp; Storage</b>	<p><b>Use a manual defrost freezer and avoid repeated freeze-thaw cycles.</b></p> <ul style="list-style-type: none"> <li>12 months from date of receipt, -20 to -70 °C as supplied.</li> <li>1 month, 2 to 8 °C under sterile conditions after reconstitution.</li> <li>6 months, -20 to -70 °C under sterile conditions after reconstitution.</li> </ul>

## BACKGROUND

Intercellular Adhesion Molecule-3 (ICAM-3, CD50), a member of the immunoglobulin superfamily, binds the leukocyte integrins LFA-1 (CD11a/CD18) and  $\alpha_4\beta_2$ . ICAM-3 is expressed on leukocytes and epidermal Langerhans cells. It may play an important role in T cell stimulation by Langerhans cells. ICAM-3 has not been identified in the mouse.

### References:

- Hayflick, J. *et al.* (1998) Immunologic Res. **17**:313.