

DESCRIPTION

Species Reactivity	Human
Specificity	Detects human E-Selectin/P-Selectin (CD62E/P). Binds to COS cells transfected with human E-Selectin or human P-Selectin. It does not bind to CHO cells transfected with human ICAM-1, L-Selectin, PECAM-1 or VCAM-1.
Source	Monoclonal Mouse IgG ₁ Clone # BBIG-E6 (13D5)
Purification	Protein A or G purified from hybridoma culture supernatant
Immunogen	Activated HUVEC human umbilical vein endothelial cells
Formulation	Lyophilized from a 0.2 µm filtered solution in PBS with Trehalose. See Certificate of Analysis for details.

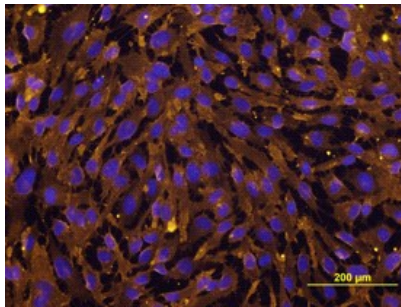
APPLICATIONS

Please Note: Optimal dilutions should be determined by each laboratory for each application. General Protocols are available in the Technical Information section on our website.

	Recommended Concentration	Sample
Flow Cytometry	2.5 µg/10 ⁶ cells	HUVEC human umbilical vein endothelial cells treated with Recombinant Human TNF-α (Catalog # 210-TA)
Immunocytochemistry	8-25 µg/mL	See Below
CyTOF-ready	Ready to be labeled using established conjugation methods. No BSA or other carrier proteins that could interfere with conjugation.	
Adhesion Blockade	The adhesion of U937 human histiocytic lymphoma cells (5 x 10 ⁴ cells/well) to immobilized Recombinant Human P-Selectin/CD62P (Catalog # ADP3, 10 µg/mL, 100 µL/well) was maximally inhibited (80-100%) by 10 µg/mL of the antibody.	
Immunoprecipitation	Pigott, R. <i>et al.</i> (1991) J. Immunol. 147 :130.	

DATA

Immunocytochemistry



E-Selectin (CD62E)/P-Selectin (CD62P) in HUVEC Human Cells.

E-Selectin (CD62E)/P-Selectin (CD62P) was detected in immersion fixed HUVEC human umbilical vein endothelial cells stimulated with TNF-α (Catalog # 210-TA-010) using Mouse Anti-Human E-Selectin (CD62E)/P-Selectin (CD62P) Monoclonal Antibody (Catalog # BBA1) at 10 µg/mL for 3 hours at room temperature. Cells were stained using the Northern-Lights™ 557-conjugated Anti-Mouse IgG Secondary Antibody (yellow; Catalog # NL007) and counterstained with DAPI (blue). View our protocol for [Fluorescent ICC Staining of Cells on Coverslips](#).

PREPARATION AND STORAGE

Reconstitution	Sterile PBS to a final concentration of 0.5 mg/mL.
Shipping	The product is shipped at ambient temperature. Upon receipt, store it immediately at the temperature recommended below.
Stability & Storage	<p>Use a manual defrost freezer and avoid repeated freeze-thaw cycles.</p> <ul style="list-style-type: none"> ● 12 months from date of receipt, -20 to -70 °C as supplied. ● 1 month, 2 to 8 °C under sterile conditions after reconstitution. ● 6 months, -20 to -70 °C under sterile conditions after reconstitution.

BACKGROUND

E-Selectin and P-Selectin are related (44% amino acid sequence identity) adhesion molecules containing multiple short complement-like repeats and an N-terminal C-type lectin domain in their extracellular regions. E-Selectin is expressed on activated vascular endothelial cells and P-Selectin occurs on activated platelets and endothelial cells.