

DESCRIPTION

Species Reactivity	Mouse
Specificity	Detects mouse CD3. Recognizes mouse T cell receptor-associated CD3 complex that is expressed on thymocytes and mature T cells.
Source	Monoclonal Rat IgG _{2B} Clone # 17A2
Purification	Protein A or G purified from hybridoma culture supernatant
Immunogen	T cell hybridoma D1
Formulation	Lyophilized from a 0.2 µm filtered solution in PBS with BSA as a carrier protein. See Certificate of Analysis for details.

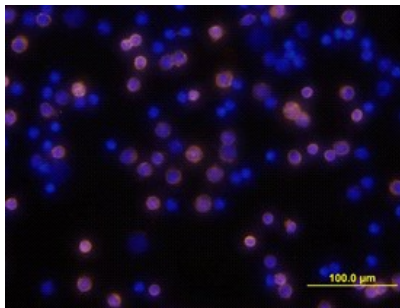
APPLICATIONS

Please Note: Optimal dilutions should be determined by each laboratory for each application. *General Protocols* are available in the *Technical Information* section on our website.

	Recommended Concentration	Sample
Flow Cytometry	2.5 µg/10 ⁶ cells	Mouse splenocytes
Immunocytochemistry	8-25 µg/mL	See Below
Immunohistochemistry	Miescher, G.C. <i>et al.</i> (1989) Immunol. Lett. 23 :113.	
Immunoprecipitation	Miescher, G.C. <i>et al.</i> (1989) Immunol. Lett. 23 :113.	

DATA

Immunocytochemistry



CD3 in Mouse Splenocytes.
CD3 was detected in immersion fixed mouse splenocytes using Rat Anti-Mouse CD3 Biotinylated Monoclonal Antibody (Catalog # BAM4841) at 10 µg/mL for 3 hours at room temperature. Cells were stained using the NorthernLights™ 557-conjugated Streptavidin (yellow; Catalog # NL999) and counterstained with DAPI (blue). View our protocol for [Fluorescent ICC Staining of Non-adherent Cells](#).

PREPARATION AND STORAGE

Reconstitution	Reconstitute at 0.5 mg/mL in sterile PBS.
Shipping	The product is shipped at ambient temperature. Upon receipt, store it immediately at the temperature recommended below.
Stability & Storage	<p>Use a manual defrost freezer and avoid repeated freeze-thaw cycles.</p> <ul style="list-style-type: none"> ● 12 months from date of receipt, -20 to -70 °C as supplied. ● 1 month, 2 to 8 °C under sterile conditions after reconstitution. ● 6 months, -20 to -70 °C under sterile conditions after reconstitution.