

## DESCRIPTION

<b>Species Reactivity</b>	Human
<b>Specificity</b>	Detects human TRA-1-85.
<b>Source</b>	Monoclonal Mouse IgG <sub>1</sub> Clone # TRA-1-85
<b>Purification</b>	Protein A or G purified from hybridoma culture supernatant
<b>Immunogen</b>	2120Ep human embryonal carcinoma cell line
<b>Formulation</b>	Lyophilized from a 0.2 µm filtered solution in PBS with BSA as a carrier protein. See Certificate of Analysis for details.

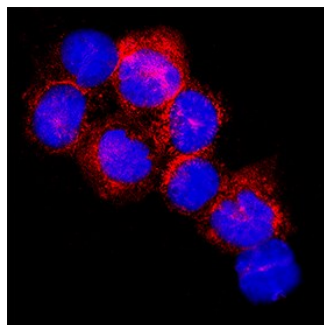
## APPLICATIONS

**Please Note:** Optimal dilutions should be determined by each laboratory for each application. [General Protocols](#) are available in the *Technical Information* section on our website.

	<b>Recommended Concentration</b>	<b>Sample</b>
<b>Flow Cytometry</b>	2.5 µg/10 <sup>6</sup> cells	Human peripheral blood mononuclear cells
<b>Immunocytochemistry</b>	8-25 µg/mL	Immersion fixed THP-1 human acute monocytic leukemia cell line
<b>Western Blot</b>	Williams, B.P. <i>et al.</i> (1988) Immunogenetics. <b>27</b> :322. This application was not tested by R&D Systems.	

## DATA

### Immunocytochemistry



**TRA-1-85/CD147 in THP-1 Human Cell Line.** TRA-1-85/CD147 was detected in immersion fixed THP-1 human acute monocytic leukemia cell line using Mouse Anti-Human TRA-1-85/CD147 Biotinylated Monoclonal Antibody (Catalog # BAM3195) at 25 µg/mL for 3 hours at room temperature. Cells were stained using the NorthernLights™ 557-conjugated Anti-Mouse IgG Secondary Antibody (red; Catalog # NL007) and counterstained with DAPI (blue). Specific staining was localized to cell surface and cytoplasm. Staining was performed using our protocol for Fluorescent ICC Staining of Non-adherent Cells.

## PREPARATION AND STORAGE

<b>Reconstitution</b>	Reconstitute at 0.5 mg/mL in sterile PBS.
<b>Shipping</b>	The product is shipped at ambient temperature. Upon receipt, store it immediately at the temperature recommended below.
<b>Stability &amp; Storage</b>	<p><b>Use a manual defrost freezer and avoid repeated freeze-thaw cycles.</b></p> <ul style="list-style-type: none"> <li>12 months from date of receipt, -20 to -70 °C as supplied.</li> <li>1 month, 2 to 8 °C under sterile conditions after reconstitution.</li> <li>6 months, -20 to -70 °C under sterile conditions after reconstitution.</li> </ul>

## BACKGROUND

The TRA-1-85 clone recognizes the cell surface expressed Oka blood group antigen in almost all human cell types (1). This antibody is frequently used to identify human cells.

### References:

1. Williams, B.P. *et al.* (1988) Immunogenetics. **27**:322.