

DESCRIPTION

Species Reactivity	Mouse
Specificity	Detects mouse c-Rel.
Source	Monoclonal Rat IgG _{2A} Clone # 290512
Purification	Protein A or G purified from hybridoma culture supernatant
Immunogen	<i>E. coli</i> -derived recombinant mouse c-Rel Met1-Ile588 Accession # P15307
Formulation	Lyophilized from a 0.2 µm filtered solution in PBS with BSA as a carrier protein. See Certificate of Analysis for details.

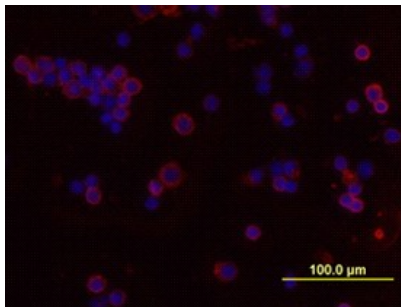
APPLICATIONS

Please Note: Optimal dilutions should be determined by each laboratory for each application. *General Protocols* are available in the *Technical Information* section on our website.

	Recommended Concentration	Sample
Immunocytochemistry	8-25 µg/mL	See Below

DATA

Immunocytochemistry



c-Rel in Mouse Splenocytes. c-Rel was detected in immersion fixed mouse splenocytes using 10 µg/mL Mouse c-Rel Biotinylated Monoclonal Antibody (Catalog # BAM2699) for 3 hours at room temperature. Cells were stained with the NorthernLights™ 557-conjugated Streptavidin (red; Catalog # NL999) and counterstained with DAPI (blue). View our protocol for [Fluorescent ICC Staining of Non-adherent Cells](#).

PREPARATION AND STORAGE

Reconstitution	Reconstitute at 0.5 mg/mL in sterile PBS.
Shipping	The product is shipped at ambient temperature. Upon receipt, store it immediately at the temperature recommended below.
Stability & Storage	Use a manual defrost freezer and avoid repeated freeze-thaw cycles. <ul style="list-style-type: none"> ● 12 months from date of receipt, -20 to -70 °C as supplied. ● 1 month, 2 to 8 °C under sterile conditions after reconstitution. ● 6 months, -20 to -70 °C under sterile conditions after reconstitution.

BACKGROUND

c-Rel is a member of the NFκB/Rel family of transcription factors. NFκB/Rel dimers containing c-Rel regulate expression of genes involved in lymphoid cell development, proliferation, and survival.