

DESCRIPTION

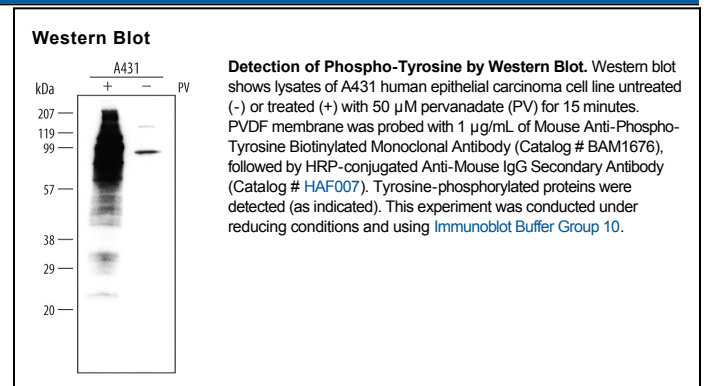
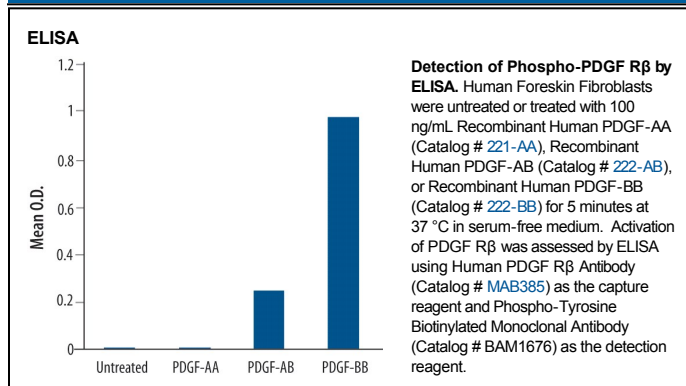
Specificity	Detects proteins containing phosphorylated tyrosine residues. ELISA and 2D Western blot analyses using pervanadate-treated cell lysates indicate that clone 179003 binds Phospho-Tyrosine in a broad manner largely independent of the surrounding amino acid sequence. The antibody does not cross-react with proteins or peptides containing phosphorylated serine or threonine residues.
Source	Monoclonal Mouse IgG ₁ Clone # 179003
Purification	Protein A or G purified from hybridoma culture supernatant
Immunogen	KLH-coupled Phospho-Tyrosine synthetic peptide
Formulation	Lyophilized from a 0.2 µm filtered solution in PBS with BSA as a carrier protein. See Certificate of Analysis for details.

APPLICATIONS

Please Note: Optimal dilutions should be determined by each laboratory for each application. *General Protocols* are available in the *Technical Information* section on our website.

	Recommended Concentration	Sample
Western Blot	1 µg/mL	See Below
ELISA	0.75 µg/mL	See Below

DATA



PREPARATION AND STORAGE

Reconstitution	Reconstitute at 0.5 mg/mL in sterile PBS.
Shipping	The product is shipped at ambient temperature. Upon receipt, store it immediately at the temperature recommended below.
Stability & Storage	<p>Use a manual defrost freezer and avoid repeated freeze-thaw cycles.</p> <ul style="list-style-type: none"> ● 12 months from date of receipt, -20 to -70 °C as supplied. ● 1 month, 2 to 8 °C under sterile conditions after reconstitution. ● 6 months, -20 to -70 °C under sterile conditions after reconstitution.