

## DESCRIPTION

<b>Species Reactivity</b>	Mouse
<b>Specificity</b>	Detects mouse B220/CD45R. Reacts with the extracellular domain of mouse B220/CD45R antigen.
<b>Source</b>	Monoclonal Rat IgG <sub>2A</sub> Clone # RA3-6B2
<b>Purification</b>	Protein A or G purified from hybridoma culture supernatant
<b>Immunogen</b>	Abelson mouse leukemia virus-induced pre-B tumor cells
<b>Formulation</b>	Lyophilized from a 0.2 µm filtered solution in PBS with BSA as a carrier protein. See Certificate of Analysis for details.

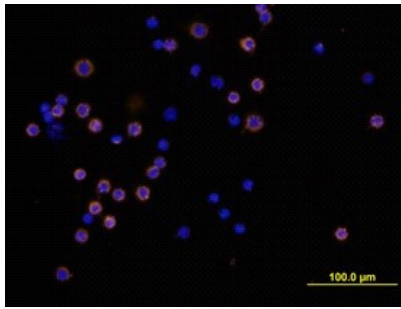
## APPLICATIONS

**Please Note:** Optimal dilutions should be determined by each laboratory for each application. *General Protocols* are available in the *Technical Information* section on our website.

	Recommended Concentration	Sample
<b>Flow Cytometry</b>	2.5 µg/10 <sup>6</sup> cells	Mouse splenocytes
<b>Immunocytochemistry</b>	8-25 µg/mL	See Below
<b>Immunoprecipitation</b>	Coffman, R.L. (1982) <i>Immuno. Rev.</i> <b>69</b> :5.	

## DATA

### Immunocytochemistry



**B220/CD45R in Mouse Splenocytes.** B220/CD45R was detected in immersion fixed mouse splenocytes using Mouse B220/CD45R Biotinylated Monoclonal Antibody (Catalog # BAM1217) at 10 µg/mL for 3 hours at room temperature. Cells were stained using the NorthernLights™ 557-conjugated Streptavidin (yellow; Catalog # NL999) and counterstained with DAPI (blue). View our protocol for [Fluorescent ICC Staining of Non-adherent Cells](#).

## PREPARATION AND STORAGE

<b>Reconstitution</b>	Reconstitute at 0.5 mg/mL in sterile PBS.
<b>Shipping</b>	The product is shipped at ambient temperature. Upon receipt, store it immediately at the temperature recommended below.
<b>Stability &amp; Storage</b>	<p><b>Use a manual defrost freezer and avoid repeated freeze-thaw cycles.</b></p> <ul style="list-style-type: none"> <li>● 12 months from date of receipt, -20 to -70 °C as supplied.</li> <li>● 1 month, 2 to 8 °C under sterile conditions after reconstitution.</li> <li>● 6 months, -20 to -70 °C under sterile conditions after reconstitution.</li> </ul>

## BACKGROUND

B220 (accession # P06800) is the mouse CD45 isoform CD45R, which is predominantly expressed on all B lymphocytes, including pro-, mature and activated B cells (1-3). The level of B220 antigen expression on the B cell lineage is developmentally regulated (2-4) and this antibody is commonly used as a B cell marker. RA3-6B2 has been reported to inhibit *in vivo* B cell responses (5, 6).

### References:

1. Coffman, R.L. (1982) *Immuno. Rev.* **69**:5.
2. Hardy, R.R. *et al.* (1991) *J. Exp. Med.* **173**:1213.
3. Hathcock, K.S. *et al.* (1992) *J. Immunol.* **149**:2286.
4. Allman, D.M. *et al.* (1992) *J. Immunol.* **149**:2533.
5. Asensi, V.K. *et al.* (1989) *Immunology* **68**:204.
6. Domiati-Saad, R. *et al.* (1993) *J. Immunol.* **151**:5936.