

## DESCRIPTION

<b>Species Reactivity</b>	Mouse
<b>Specificity</b>	Detects mouse Ly-6G/Ly-6C (Gr-1). Weak cross-reactivity with Ly-6C is observed.
<b>Source</b>	Monoclonal Rat IgG <sub>2B</sub> Clone # RB6-8C5
<b>Purification</b>	Protein A or G purified from hybridoma culture supernatant
<b>Immunogen</b>	The immunogen for this antibody is Ly-6G (Gr-1, Gr1).
<b>Formulation</b>	Lyophilized from a 0.2 μm filtered solution in PBS with BSA as a carrier protein. See Certificate of Analysis for details.

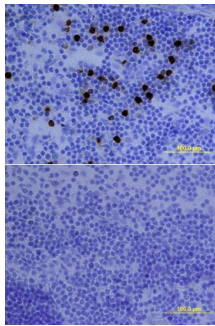
## APPLICATIONS

**Please Note:** Optimal dilutions should be determined by each laboratory for each application. *General Protocols* are available in the *Technical Information* section on our website.

	Recommended Concentration	Sample
<b>Flow Cytometry</b>	0.25 μg/10 <sup>6</sup> cells	Mouse splenocytes
<b>Immunohistochemistry</b>	Nitta, H. <i>et al.</i> (1997) <i>Cell Vision</i> <b>4</b> :73.	
<b>Immunoprecipitation</b>	Conlan, J.W. and R.J. North (1994) <i>J. Exp. Med.</i> <b>179</b> :259.	

## DATA

### Immunohistochemistry



**Ly-6G/Ly-6C (Gr-1) in Mouse Spleen.** Ly-6G/Ly-6C (Gr-1) was detected in immersion fixed frozen sections of mouse spleen using Rat Anti-Mouse Ly-6G/Ly-6C (Gr-1) Biotinylated Monoclonal Antibody (Catalog # BAM1037) at 15 μg/mL overnight at 4 °C. Tissue was stained using the Anti-Rat HRP-DAB Cell & Tissue Staining Kit (brown; Catalog # CTS017) and counterstained with hematoxylin (blue). Lower panel shows a lack of labeling if primary antibodies are omitted and tissue is stained only with secondary antibody followed by incubation with detection reagents. View our protocol for [Chromogenic IHC Staining of Frozen Tissue Sections](#).

## PREPARATION AND STORAGE

<b>Reconstitution</b>	Reconstitute at 0.5 mg/mL in sterile PBS.
<b>Shipping</b>	The product is shipped at ambient temperature. Upon receipt, store it immediately at the temperature recommended below.
<b>Stability &amp; Storage</b>	<p><b>Use a manual defrost freezer and avoid repeated freeze-thaw cycles.</b></p> <ul style="list-style-type: none"> <li>● 12 months from date of receipt, -20 to -70 °C as supplied.</li> <li>● 1 month, 2 to 8 °C under sterile conditions after reconstitution.</li> <li>● 6 months, -20 to -70 °C under sterile conditions after reconstitution.</li> </ul>

## BACKGROUND

Gr-1, also called Ly-6G, is a myeloid differentiation antigen that is a member of the Ly-6 family. The RB6-8C5 antibody recognizes Gr-1/Ly-6G, and also reacts weakly with Ly-6C-transfected EL4 cells (1, 2). In the periphery, this antibody specifically recognized granulocytes (3, 4).

### References:

1. Spangrude, G.J. *et al.* (1988) *Science* **241**:58
2. Fleming, T.J. *et al.* (1993) *J. Immunol.* **151**:2399
3. Lewinsohn, D.M. *et al.* (1987) *J. Immunol.* **147**:22
4. Lagasse, E. and I. L. Weissman (1996) *J. Immunol. Methods* **197**:139