

## DESCRIPTION

<b>Species Reactivity</b>	Human
<b>Specificity</b>	Detects human MCAM/CD146 in Western blots. In Western blots, less than 5% cross-reactivity with recombinant human (rh) ALCAM, recombinant mouse (rm) MAdCAM-1, and rmOCAM is observed and less than 1% cross-reactivity with rhBCAM, rhEpCAM, rhNCAM-L1, and rhTROP-2 is observed.
<b>Source</b>	Polyclonal Goat IgG
<b>Purification</b>	Antigen Affinity-purified
<b>Immunogen</b>	Mouse myeloma cell line NS0-derived recombinant human MCAM/CD146 Met1-Gly559 Accession # AAA20824
<b>Formulation</b>	Lyophilized from a 0.2 µm filtered solution in PBS with BSA as a carrier protein. See Certificate of Analysis for details.

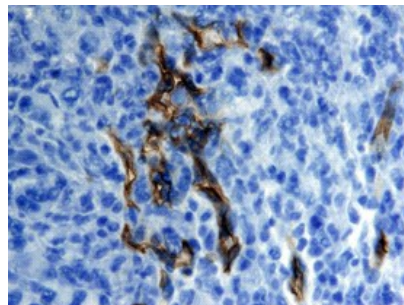
## APPLICATIONS

**Please Note:** Optimal dilutions should be determined by each laboratory for each application. *General Protocols* are available in the *Technical Information* section on our website.

	<b>Recommended Concentration</b>	<b>Sample</b>
<b>Western Blot</b>	0.1 µg/mL	Recombinant Human MCAM/CD146
<b>Immunohistochemistry</b>	5-15 µg/mL	See Below

## DATA

### Immunohistochemistry



**MCAM/CD146 in Human Melanoma.** MCAM/CD146 was detected in immersion fixed paraffin-embedded sections of human melanoma tissue using Goat Anti-Human MCAM/CD146 Biotinylated Antigen Affinity-purified Polyclonal Antibody (Catalog # BAF932) at 15 µg/mL overnight at 4 °C. Tissue was stained using the Anti-Goat HRP-DAB Cell & Tissue Staining Kit (brown; Catalog # CTS008) and counterstained with hematoxylin (blue). View our protocol for [Chromogenic IHC Staining of Paraffin-embedded Tissue Sections](#).

## PREPARATION AND STORAGE

<b>Reconstitution</b>	Reconstitute at 0.2 mg/mL in sterile PBS.
<b>Shipping</b>	The product is shipped at ambient temperature. Upon receipt, store it immediately at the temperature recommended below.
<b>Stability &amp; Storage</b>	<p><b>Use a manual defrost freezer and avoid repeated freeze-thaw cycles.</b></p> <ul style="list-style-type: none"> <li>● 12 months from date of receipt, -20 to -70 °C as supplied.</li> <li>● 1 month, 2 to 8 °C under sterile conditions after reconstitution.</li> <li>● 6 months, -20 to -70 °C under sterile conditions after reconstitution.</li> </ul>