

DESCRIPTION

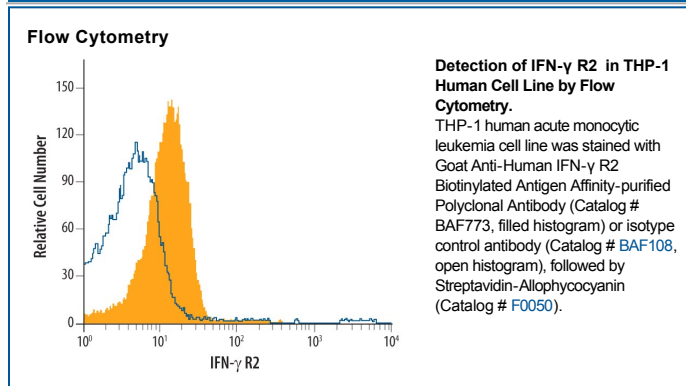
Species Reactivity	Human
Specificity	Detects human IFN- γ R2 in Western blots. In Western blots, less than 1% cross-reactivity with recombinant human (rh) IFN- γ R1 and rHL-10 R β is observed.
Source	Polyclonal Goat IgG
Purification	Antigen Affinity-purified
Immunogen	Mouse myeloma cell line NS0-derived recombinant human IFN- γ R2 Ala22-Gln247 Accession # P38484
Formulation	Lyophilized from a 0.2 μ m filtered solution in PBS with BSA as a carrier protein. See Certificate of Analysis for details.

APPLICATIONS

Please Note: Optimal dilutions should be determined by each laboratory for each application. *General Protocols* are available in the *Technical Information* section on our website.

	Recommended Concentration	Sample
Western Blot	0.1 μ g/mL	Recombinant Human IFN- γ R2
Flow Cytometry	0.25 μ g/10 ⁶ cells	See Below

DATA



PREPARATION AND STORAGE

Reconstitution	Reconstitute at 0.2 mg/mL in sterile PBS.
Shipping	The product is shipped at ambient temperature. Upon receipt, store it immediately at the temperature recommended below.
Stability & Storage	Use a manual defrost freezer and avoid repeated freeze-thaw cycles. <ul style="list-style-type: none"> ● 12 months from date of receipt, -20 to -70 °C as supplied. ● 1 month, 2 to 8 °C under sterile conditions after reconstitution. ● 6 months, -20 to -70 °C under sterile conditions after reconstitution.

BACKGROUND

Interferon gamma Receptor 2 (IFN- γ R2) is a type II transmembrane protein that associates with IFN- γ R1 to form a high affinity receptor complex for IFN- γ . IFN- γ R2 is required for signal transduction but does not bind IFN- γ by itself.