

## DESCRIPTION

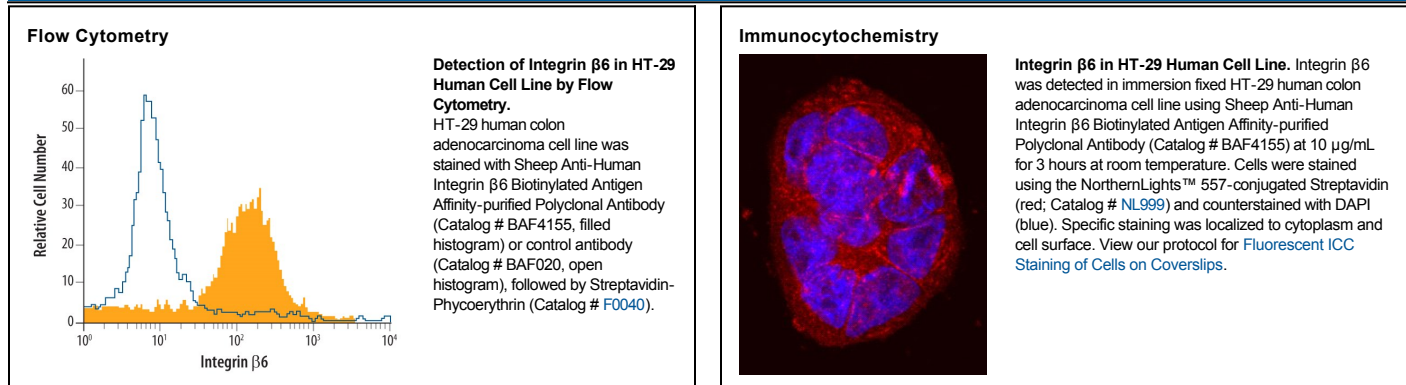
<b>Species Reactivity</b>	Human
<b>Specificity</b>	Detects human Integrin $\beta 6$ in Western blots. In Western blots, approximately 25% cross-reactivity with recombinant mouse Integrin $\beta 6$ is observed, approximately 10% cross-reactivity with recombinant human (rh) Integrin $\beta 3$ is observed, and less than 5% cross-reactivity with rhIntegrin $\beta 5$ is observed.
<b>Source</b>	Polyclonal Sheep IgG
<b>Purification</b>	Antigen Affinity-purified
<b>Immunogen</b>	Mouse myeloma cell line NS0-derived recombinant human Integrin $\beta 6$ Gly22-Asn707 Accession # P18564
<b>Formulation</b>	Lyophilized from a 0.2 $\mu\text{m}$ filtered solution in PBS with BSA as a carrier protein. See Certificate of Analysis for details.

## APPLICATIONS

**Please Note:** Optimal dilutions should be determined by each laboratory for each application. *General Protocols* are available in the *Technical Information* section on our website.

	<b>Recommended Concentration</b>	<b>Sample</b>
<b>Western Blot</b>	0.1 $\mu\text{g}/\text{mL}$	Recombinant Human Integrin $\beta 6$
<b>Flow Cytometry</b>	2.5 $\mu\text{g}/10^6$ cells	See Below
<b>Immunocytochemistry</b>	5-15 $\mu\text{g}/\text{mL}$	See Below

## DATA



## PREPARATION AND STORAGE

<b>Reconstitution</b>	Reconstitute at 0.2 mg/mL in sterile PBS.
<b>Shipping</b>	The product is shipped at ambient temperature. Upon receipt, store it immediately at the temperature recommended below.
<b>Stability &amp; Storage</b>	<p><b>Use a manual defrost freezer and avoid repeated freeze-thaw cycles.</b></p> <ul style="list-style-type: none"> <li>● 12 months from date of receipt, -20 to -70 °C as supplied.</li> <li>● 1 month, 2 to 8 °C under sterile conditions after reconstitution.</li> <li>● 6 months, -20 to -70 °C under sterile conditions after reconstitution.</li> </ul>

## BACKGROUND

Integrin  $\beta 6$  (ITG $\beta 6$ ) is a 95 kDa member of the Integrin beta family. It forms noncovalent heterodimers with Integrin  $\alpha V$  and appears on epithelia following injury or inflammation. It activates TGF- $\beta$  and assists keratinocyte migration. Human Integrin  $\beta 6$  is a type I transmembrane glycoprotein that is 767 aa in length. It contains a 688 aa extracellular domain (ECD) (aa 22-709) that incorporates a 241 aa VWF-A domain. Over aa 22-707, human integrin  $\beta 6$  ECD shares 90% and 93% aa sequence identity with mouse and pig integrin  $\beta 6$  ECD, respectively.