



Biotinylated Anti-human Matriptase/ST14 Catalytic Domain Antibody

ORDERING INFORMATION

Catalog Number: BAF3946

Lot Number: ZGJ01

Size: 50 µg

Formulation: 0.2 µm filtered solution in PBS with BSA

Storage: -20° C

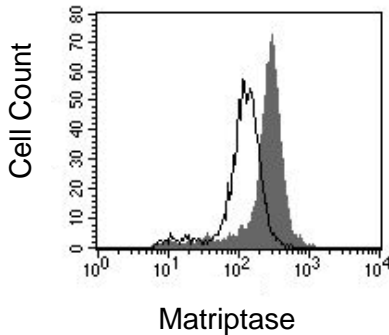
Reconstitution: sterile 0.1% BSA in TBS

Specificity: human Matriptase Catalytic Domain

Immunogen: *E. coli*-derived rhMatriptase (aa 615 - 855)

Ig Type: sheep IgG

Applications: Western blot
Flow cytometry



PC-3 cells were stained with biotinylated anti-Matriptase (R&D Systems, Cat. # BAF3946, filled histogram), or control antibody (R&D Systems, Cat # BAF108, open histogram), followed by PE-conjugated streptavidin (R&D Systems, Cat. # F0040).

Preparation

Produced in sheep immunized with purified, *E. coli*-derived, recombinant human Matriptase (rhMatriptase; aa 615 - 855; R&D Systems, Catalog # 3946-SE). Human Matriptase specific IgG was purified by human Matriptase affinity chromatography and then biotinylated.

Formulation

Lyophilized from a 0.2 µm filtered solution in phosphate-buffered saline (PBS) containing 50 µg of bovine serum albumin (BSA) per 1 µg of antibody.

Reconstitution

Reconstitute with sterile Tris-buffered saline pH 7.3 (20 mM Trizma base, 150 mM NaCl) containing 0.1% BSA. If 1 mL of buffer is used, the antibody concentration will be 50 µg/mL.

Storage

Lyophilized samples are stable for twelve months from date of receipt when stored at -20° C to -70° C. Upon reconstitution, the antibody can be stored at 2° - 8° C for 1 month without detectable loss of activity. Reconstituted antibody can also be aliquotted and stored frozen at -20° C to -70° C in a manual defrost freezer for six months without detectable loss of activity. **Avoid repeated freeze-thaw cycles.**

Specificity

This antibody has been selected for use as a detection antibody in the applications listed below.

Applications

Western blot - This antibody can be used at 0.1 - 0.2 µg/mL with the appropriate secondary reagents to detect human Matriptase. The detection limit for rhMatriptase is approximately 2 ng/lane under non-reducing and reducing conditions.

Flow cytometry - This antibody was tested in flow cytometry using PC-3 cells. For intracellular staining to detect Matriptase, cells must first be fixed and permeabilized using 4% paraformaldehyde and 0.1% saponin in PBS. Dilute this antibody to 25 µg/mL and add 10 µL of the diluted solution to 1 - 5 x 10⁵ cells in a total reaction volume not exceeding 200 µL. The binding of biotinylated antibodies may be visualized by adding a secondary developing reagent such as streptavidin conjugated to a fluorochrome.

Optimal dilutions should be determined by each laboratory for each application.

FOR RESEARCH USE ONLY. NOT FOR USE IN HUMANS.

R&D Systems, Inc.
1-800-343-7475

2/11/08