

DESCRIPTION

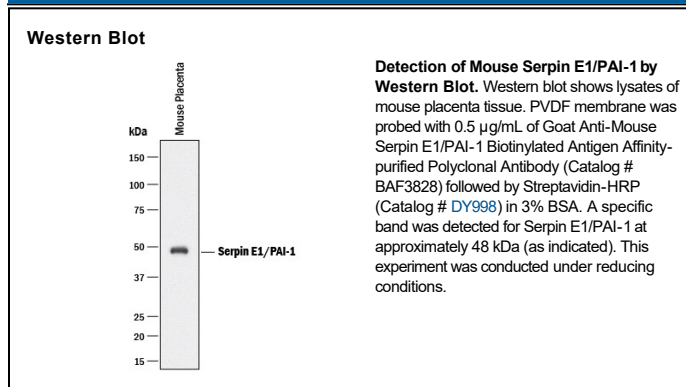
Species Reactivity	Mouse
Specificity	Detects mouse Serpin E1/PAI-1 in Western blots. In Western blots, approximately 20% cross-reactivity with recombinant human (rh) Serpin E1 is observed, and less than 2% cross-reactivity with recombinant mouse (rm) Serpin E2 and rmSerpin I1 is observed.
Source	Polyclonal Goat IgG
Purification	Antigen Affinity-purified
Immunogen	Mouse myeloma cell line NS0-derived recombinant mouse Serpin E1/PAI-1 Leu24-Ser402 Accession # AAH54091
Formulation	Lyophilized from a 0.2 µm filtered solution in PBS with BSA as a carrier protein. See Certificate of Analysis for details.

APPLICATIONS

Please Note: Optimal dilutions should be determined by each laboratory for each application. *General Protocols* are available in the *Technical Information* section on our website.

	Recommended Concentration	Sample
Western Blot	0.5 µg/mL	See Below

DATA



PREPARATION AND STORAGE

Reconstitution	Reconstitute at 0.2 mg/mL in sterile PBS.
Shipping	The product is shipped at ambient temperature. Upon receipt, store it immediately at the temperature recommended below.
Stability & Storage	<p>Use a manual defrost freezer and avoid repeated freeze-thaw cycles.</p> <ul style="list-style-type: none"> ● 12 months from date of receipt, -20 to -70 °C as supplied. ● 1 month, 2 to 8 °C under sterile conditions after reconstitution. ● 6 months, -20 to -70 °C under sterile conditions after reconstitution.

BACKGROUND

Serpin E1, also known as Plasminogen Activator Inhibitor-1 (PAI-1), is the principal inhibitor of urokinase-type and tissue-type plasminogen activators. It plays a major role in many processes such as angiogenesis, tumor invasion, and obesity. The amino acid sequence of mouse PAI-1 is 89%, 79% and 76% identical to that of rat, human/chimpanzee and dog.