

DESCRIPTION

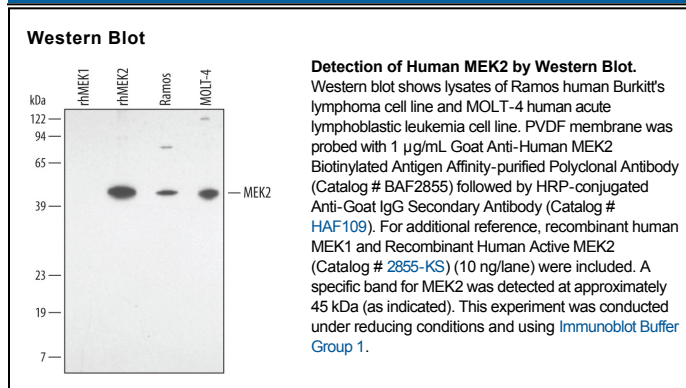
Species Reactivity	Human
Specificity	Detects human MEK2 in Western blots.
Source	Polyclonal Goat IgG
Purification	Antigen Affinity-purified
Immunogen	<i>E. coli</i> -derived recombinant human MEK2 Met1-Val400 Accession # P36507
Formulation	Lyophilized from a 0.2 µm filtered solution in PBS with BSA as a carrier protein. See Certificate of Analysis for details.

APPLICATIONS

Please Note: Optimal dilutions should be determined by each laboratory for each application. [General Protocols](#) are available in the [Technical Information](#) section on our website.

	Recommended Concentration	Sample
Western Blot	1 µg/mL	See Below

DATA



PREPARATION AND STORAGE

Reconstitution	Reconstitute at 0.2 mg/mL in sterile PBS.
Shipping	The product is shipped at ambient temperature. Upon receipt, store it immediately at the temperature recommended below.
Stability & Storage	<p>Use a manual defrost freezer and avoid repeated freeze-thaw cycles.</p> <ul style="list-style-type: none"> ● 12 months from date of receipt, -20 to -70 °C as supplied. ● 1 month, 2 to 8 °C under sterile conditions after reconstitution. ● 6 months, -20 to -70 °C under sterile conditions after reconstitution.

BACKGROUND

Mitogen-activated protein kinase kinase 2 (MAP2K2), also known as MEK2 and MKK2, belongs to the STE grouping of kinases. Both MEK2 and the related MEK1 are dual-specificity kinases, phosphorylating and activating the mitogen-activated protein kinases ERK1 and ERK2 at T and Y positions within the phosphoacceptor sequence T-E-Y. Activation of MEK2 by Raf occurs through phosphorylation at S222 and S226.