

DESCRIPTION

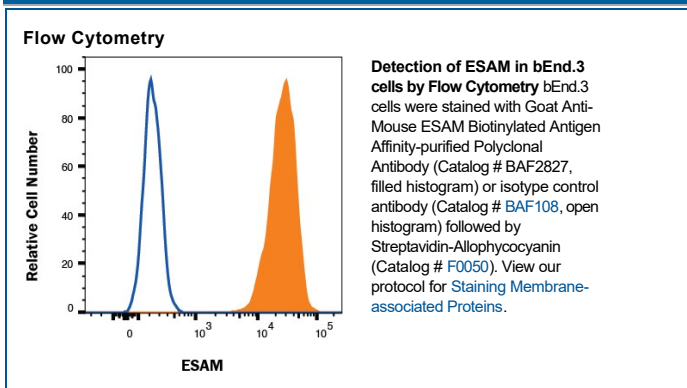
Species Reactivity	Mouse
Specificity	Detects mouse ESAM in Western blots. In Western blots, approximately 5% cross-reactivity with recombinant human ESAM is observed.
Source	Polyclonal Goat IgG
Purification	Antigen Affinity-purified
Immunogen	Mouse myeloma cell line NS0-derived recombinant mouse ESAM Gln30-Ser248 Accession # Q925F2
Formulation	Lyophilized from a 0.2 µm filtered solution in PBS with BSA as a carrier protein.

APPLICATIONS

Please Note: Optimal dilutions should be determined by each laboratory for each application. *General Protocols* are available in the *Technical Information* section on our website.

	Recommended Concentration	Sample
Western Blot	0.1 µg/mL	Recombinant Mouse ESAM
Flow Cytometry	0.25 µg/10 ⁶ cells	bEnd.3 mouse endothelioma cell line

DATA



PREPARATION AND STORAGE

Reconstitution	Reconstitute at 0.2 mg/mL in sterile PBS.
Shipping	The product is shipped at ambient temperature. Upon receipt, store it immediately at the temperature recommended below.
Stability & Storage	<p>Use a manual defrost freezer and avoid repeated freeze-thaw cycles.</p> <ul style="list-style-type: none"> • 12 months from date of receipt, -20 to -70 °C as supplied. • 1 month, 2 to 8 °C under sterile conditions after reconstitution. • 6 months, -20 to -70 °C under sterile conditions after reconstitution.

BACKGROUND

ESAM is a 55 kDa type I transmembrane glycoprotein belonging to the CTX (cortical thymocyte marker in *Xenopus*) family of cell adhesion molecules within the immunoglobulin superfamily. Other family members are CXADR, CLMP, JAM-A-C, CD2, A33, and BT-IgSF. The extracellular region of ESAM contains one V-type and one C2-type Ig domain and is involved in homophilic adhesion. Mouse ESAM extracellular domain shares 69% amino acid sequence identity with the corresponding region of human ESAM. ESAM is expressed on endothelial cells, activated platelets and megakaryocytes and can be found associated with cell-to-cell junctions.