

DESCRIPTION

Species Reactivity	Human
Specificity	Detects human Syndecan-1/CD138 in ELISAs and Western blots. In sandwich ELISAs, less than 0.3% cross-reactivity with recombinant human (rh) Syndecan-2, rhSyndecan-3, rhSyndecan-4, and recombinant mouse Syndecan-1 is observed.
Source	Polyclonal Goat IgG
Purification	Antigen Affinity-purified
Immunogen	Mouse myeloma cell line NS0-derived recombinant human Syndecan-1/CD138 Gln18-Glu251 Accession # NP_002988
Formulation	Lyophilized from a 0.2 µm filtered solution in PBS with BSA as a carrier protein. See Certificate of Analysis for details.

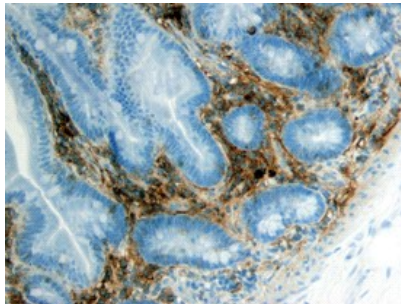
APPLICATIONS

Please Note: Optimal dilutions should be determined by each laboratory for each application. *General Protocols* are available in the *Technical Information* section on our website.

	Recommended Concentration	Sample
Western Blot	0.1 µg/mL	Recombinant Human Syndecan-1/CD138 (Catalog # 2780-SD)
Immunohistochemistry	5-15 µg/mL	See Below
Human Syndecan-1/CD138 Sandwich Immunoassay		Reagent
ELISA Capture	0.2-0.8 µg/mL	Human Syndecan-1/CD138 Antibody (Catalog # AF2780)
ELISA Detection Standard	0.1-0.4 µg/mL	Human Syndecan-1/CD138 Biotinylated Antibody (Catalog # BAF2780) Recombinant Human Syndecan-1/CD138 (Catalog # 2780-SD)

DATA

Immunohistochemistry



Syndecan-1/CD138 in Human Intestine. Syndecan-1/CD138 was detected in immersion fixed paraffin-embedded sections of human intestine using Human Syndecan-1/CD138 Biotinylated Antigen Affinity-purified Polyclonal Antibody (Catalog # BAF2780) at 15 µg/mL overnight at 4 °C. Tissue was stained using the Anti-Goat HRP-DAB Cell & Tissue Staining Kit (brown; Catalog # CTS008) and counterstained with hematoxylin (blue). View our protocol for [Chromogenic IHC Staining of Paraffin-embedded Tissue Sections](#).

PREPARATION AND STORAGE

Reconstitution	Reconstitute at 0.2 mg/mL in sterile PBS.
Shipping	The product is shipped at ambient temperature. Upon receipt, store it immediately at the temperature recommended below.
Stability & Storage	Use a manual defrost freezer and avoid repeated freeze-thaw cycles. <ul style="list-style-type: none"> • 12 months from date of receipt, -20 to -70 °C as supplied. • 1 month, 2 to 8 °C under sterile conditions after reconstitution. • 6 months, -20 to -70 °C under sterile conditions after reconstitution.

BACKGROUND

Human Syndecan-1 (also known as CD138) is a variably glycosylated, dimeric, type I transmembrane (TM) protein that belongs to the Syndecan family. It is synthesized as a 310 amino acid (aa) precursor that contains a 17 aa signal sequence, a 234 aa extracellular domain (ECD), a 25 aa TM segment, and a 34 aa cytoplasmic region. The ECD shows various degrees of heparan sulfate and chondroitin sulfate modification, leading to native molecular weights for Syndecan-1 of 120 - 200 kDa. Proteolytic cleavage of the membrane-bound ECD yields soluble forms of approximately the same molecular weight. Syndecan-1 is an epithelial cell Syndecan involved in Wnt and chemokine signaling. Human Syndecan-1 ECD shares 71% aa identity with the ECD of both rat and mouse Syndecan-1.

References: