



# Biotinylated Anti-human BLAME/SLAMF8 Antibody

## ORDERING INFORMATION

**Catalog Number:** BAF1907

**Lot Number:** KKK01

**Size:** 50 µg

**Formulation:** 0.2 µm filtered solution in PBS with BSA

**Storage:** -20° C

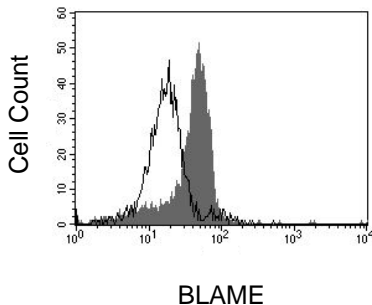
**Reconstitution:** sterile 0.1% BSA in TBS

**Specificity:** human BLAME extracellular domain

**Immunogen:** NS0-derived rhBLAME extracellular domain

**Ig Type:** goat IgG

**Applications:** Western blot  
Flow cytometry



PBMCs activated with IFN- $\gamma$  were stained with biotinylated anti-BLAME (R&D Systems, Cat. # BAF1907, filled histogram) or control antibody (R&D Systems, Cat. # BAF108, open histogram) followed by PE-conjugated streptavidin (R&D Systems, Cat. # F0040).

## Preparation

Produced in goats immunized with purified, NS0-derived, recombinant human B Lymphocyte Activator Macrophage Expressed (rhBLAME) extracellular domain. Human BLAME specific IgG was purified by human BLAME affinity chromatography and then biotinylated. BLAME, also known as signaling lymphocyte activation molecule family member 8 (SLAMF8), is an Ig superfamily protein that is part of the CD2 family of receptors. It is expressed on macrophages and dendritic cells. BLAME modulates signaling through the B-cell receptor and may also function during B-lineage commitment.

## Formulation

Lyophilized from a 0.2 µm filtered solution in phosphate-buffered saline (PBS) containing 50 µg of bovine serum albumin (BSA) per 1 µg of antibody.

## Reconstitution

Reconstitute with sterile Tris-buffered saline pH 7.3 (20 mM Trizma base, 150 mM NaCl) containing 0.1% BSA. If 1 mL of buffer is used, the antibody concentration will be 50 µg/mL.

## Storage

Lyophilized samples are stable for twelve months from date of receipt when stored at -20° C to -70° C. Upon reconstitution, the antibody can be stored at 2° - 8° C for 1 month without detectable loss of activity. Reconstituted antibody can also be aliquotted and stored frozen at -20° C to -70° C in a **manual defrost freezer** for six months without detectable loss of activity. **Avoid repeated freeze-thaw cycles.**

## Specificity

This antibody has been selected for use as a detection antibody in the applications listed below.

## Applications

**Western blot** - This antibody can be used at 0.1 - 0.2 µg/mL with the appropriate secondary reagents to detect human BLAME. The detection limit for rhBLAME is approximately 5 ng/lane under non-reducing and reducing conditions. In this format, this antibody shows less than 1% cross-reactivity with rhNTB-A/SLAMF6.

**Flow cytometry** - This antibody was tested in flow cytometry using PBMCs activated with IFN- $\gamma$ . Dilute this antibody to 25 µg/mL and add 10 µL of the diluted solution to 1 - 2.5 x 10<sup>5</sup> cells in a total reaction volume not exceeding 200 µL. The binding of biotinylated antibodies may be visualized by adding a secondary developing reagent such as streptavidin conjugated to a fluorochrome.

**Optimal dilutions should be determined by each laboratory for each application.**

FOR RESEARCH USE ONLY. NOT FOR USE IN HUMANS.

**R&D Systems, Inc.**  
**1-800-343-7475**

7/24/07