

DESCRIPTION

Species Reactivity	Human
Specificity	Detects human Cadherin-17 in Western blots. In Western blots, less than 1% cross-reactivity with recombinant human (rh) Cadherin-8, rhE-Cadherin, rhP-Cadherin, and rhVE-Cadherin is observed.
Source	Polyclonal Goat IgG
Purification	Antigen Affinity-purified
Immunogen	Mouse myeloma cell line NS0-derived recombinant human Cadherin-17 Gln23-Met787 Accession # CAA58231
Formulation	Lyophilized from a 0.2 µm filtered solution in PBS with BSA as a carrier protein. See Certificate of Analysis for details.

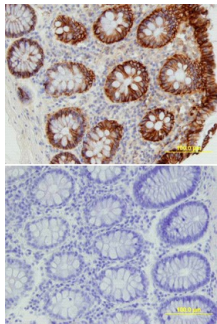
APPLICATIONS

Please Note: Optimal dilutions should be determined by each laboratory for each application. *General Protocols* are available in the *Technical Information* section on our website.

	Recommended Concentration	Sample
Western Blot	0.1 µg/mL	Recombinant Human Cadherin-17
Immunohistochemistry	5-15 µg/mL	See Below

DATA

Immunohistochemistry



Cadherin-17 in Human Colon. Cadherin-17 was detected in immersion fixed paraffin-embedded sections of human colon array using Goat Anti-Human Cadherin-17 Biotinylated Antigen Affinity-purified Polyclonal Antibody (Catalog # BAF1032) at 25 µg/mL overnight at 4 °C. Tissue was stained using the Anti-Goat HRP-DAB Cell & Tissue Staining Kit (brown; Catalog # CTS008) and counterstained with hematoxylin (blue). Lower panel shows a lack of labeling if primary antibodies are omitted and tissue is stained only with secondary antibody followed by incubation with detection reagents. View our protocol for [Chromogenic IHC Staining of Paraffin-embedded Tissue Sections](#).

PREPARATION AND STORAGE

Reconstitution	Reconstitute at 0.2 mg/mL in sterile PBS.
Shipping	The product is shipped at ambient temperature. Upon receipt, store it immediately at the temperature recommended below.
Stability & Storage	Use a manual defrost freezer and avoid repeated freeze-thaw cycles. <ul style="list-style-type: none"> ● 12 months from date of receipt, -20 to -70 °C as supplied. ● 1 month, 2 to 8 °C under sterile conditions after reconstitution. ● 6 months, -20 to -70 °C under sterile conditions after reconstitution.

BACKGROUND

Cadherin-17, also known as liver-intestine (LI) Cadherin, belongs to the cadherin family of calcium-dependent cell adhesion molecules. It associates homotypically and is selectively expressed on gastric and intestinal mucosa.