

DESCRIPTION

Source	Human embryonic kidney cell, HEK293-derived human CD30/TNFRSF8 protein		
	Human CD30/TNFRSF8 (Phe19-Lys379) Accession # P29808.1	HHHHHH	Avi-tag
	N-terminus		C-terminus
N-terminal Sequence	Phe19		
Analysis			
Structure / Form	Biotinylated via Avi-tag		
Predicted Molecular Mass	41 kDa		

SPECIFICATIONS

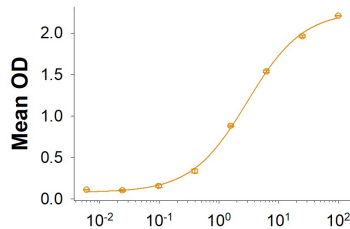
SDS-PAGE	82-98 kDa
Activity	Measured by its binding ability in a functional ELISA. When Recombinant Human CD30 Ligand/TNFSF8 (Catalog # 1028-CL) is immobilized at 0.25 µg/mL (100 µL/well), the concentration of Biotinylated Recombinant Human CD30/TNFRSF8 His-tag Avi-tag (Catalog # AV110239) that produces 50% of the optimal binding response is 2-10 ng/mL.
Endotoxin Level	<0.10 EU per 1 µg of the protein by the LAL method.
Purity	>95%, by SDS-PAGE visualized with Silver Staining and quantitative densitometry by Coomassie® Blue Staining.
Formulation	Lyophilized from a 0.2 µm filtered solution in PBS with Trehalose. See Certificate of Analysis for details.

PREPARATION AND STORAGE

Reconstitution	Reconstitute at 500 µg/mL in PBS.
Shipping	The product is shipped at ambient temperature. Upon receipt, store it immediately at the temperature recommended below.
Stability & Storage	Use a manual defrost freezer and avoid repeated freeze-thaw cycles. <ul style="list-style-type: none"> • 12 months from date of receipt, -20 to -70 °C as supplied. • 1 month, 2 to 8 °C under sterile conditions after reconstitution. • 3 months, -20 to -70 °C under sterile conditions after reconstitution.

DATA

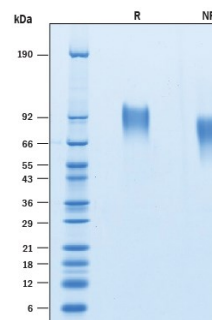
Binding Activity



Biotinylated Recombinant Human CD30/TNFRSF8 His-tag Avi-tag (ng/mL)

When Recombinant Human CD30 Ligand/TNFSF8 (Catalog # 1028-CL) is immobilized at 0.25 µg/mL, 100 µL/well, it binds Biotinylated Recombinant Human CD30/TNFRSF8 His-tag Avi-tag (Catalog # AV110239) with an ED₅₀ of 2-10 ng/mL.

SDS-PAGE



2 µg/lane of Recombinant Human CD30/TNFRSF8 His-tag Avi-tag (Catalog # AV110239) was resolved with SDS-PAGE under reducing (R) and non-reducing (NR) conditions and visualized by Coomassie® Blue staining, showing bands at 82-98 kDa.

BACKGROUND

CD30, also known as Ki-1 antigen and TNFRSF8, is a 120 kDa type I transmembrane glycoprotein belonging to the TNF receptor superfamily (1, 2). Mature human CD30 consists of a 361 amino acid (aa) extracellular domain (ECD) with six cysteine-rich repeats, a 28 aa transmembrane segment, and a 188 aa cytoplasmic domain (3). In contrast, mouse and rat CD30 lack 90 aa of the ECD and contain only three cysteine-rich repeats. Within common regions of the ECD, human CD30 shares 53% and 49% aa sequence identity with mouse and rat CD30, respectively. Alternate splicing of human CD30 generates an isoform that includes only the C-terminal 132 aa of the cytoplasmic domain. CD30 is normally expressed on antigen-stimulated Th cells and B cells (4-6). However, it is up-regulated in Hodgkin's disease (on Reed-Sternberg cells), other lymphomas, chronic inflammation, and autoimmunity (7). CD30 binds to CD30 Ligand/TNFSF8 which is expressed on activated Th cells, monocytes, granulocytes and medullary thymic epithelial cells (1, 5). CD30 signaling co-stimulates antigen-induced Th0 and Th2 proliferation and cytokine secretion but favors a Th2-biased immune response (8). In the absence of antigenic stimulation, it can still induce T cell expression of IL-13 (9). CD30 contributes to thymic negative selection by inducing the apoptotic cell death of CD4⁺CD8⁺ T cells (10, 11). In B cells, CD30 ligation promotes cellular proliferation and antibody production in addition to the expression of CXCR4, CCL3, and CCL5 (5, 12). An 85-90 kDa soluble form of CD30 is shed from the cell surface by TACE-mediated cleavage (13, 14). Soluble CD30 retains the ability to bind CD30 Ligand and functions as an inhibitor of normal CD30 signaling (15).

References:

1. Kennedy, M.K. *et al.* (2006) *Immunology* **118**:143.
2. Tarkowski, M. (2003) *Curr. Opin. Hematol.* **10**:267.
3. Durkop, H. *et al.* (1992) *Cell* **68**:421.
4. Hamann, D. *et al.* (1996) *J. Immunol.* **156**:1387.
5. Shanebeck, S.D. *et al.* (1995) *Eur. J. Immunol.* **25**:2147.
6. Gruss, H.-J. *et al.* (1994) *Blood* **83**:2045.
7. Ofizoglu E. *et al.* (2009) *Adv. Exp. Med. Biol.* **647**:174.
8. Del Prete, G. *et al.* (1995) *J. Exp. Med.* **182**:1655.
9. Harlin, H. *et al.* (2002) *J. Immunol.* **169**:2451.
10. Amakawa, R. *et al.* (1996) *Cell* **84**:551.
11. Chiarle, R. *et al.* (1999) *J. Immunol.* **163**:194.
12. Vinante, F. *et al.* (2002) *Blood* **99**:52.
13. Hansen, H.P. *et al.* (1995) *Int. J. Cancer* **63**:750.
14. Hansen, H.P. *et al.* (2000) *J. Immunol.* **165**:6703.
15. Hargreaves, P.G. and A. Al-Shamkhani (2002) *Eur. J. Immunol.* **32**:163.