

DESCRIPTION

Species Reactivity	Human/Mouse/Rat
Specificity	Detects human Cathepsin X/Z/P in direct ELISAs and Western blots. In direct ELISAs, less than 5% cross-reactivity with recombinant human Cathepsin C is observed.
Source	Polyclonal Goat IgG
Purification	Antigen Affinity-purified
Immunogen	Mouse myeloma cell line NS0-derived recombinant human Cathepsin X/Z/P Ala21-Val303 (Gly23Val, Ser48Thr) Accession # Q9UBR2
Formulation	Lyophilized from a 0.2 µm filtered solution in PBS with Trehalose. See Certificate of Analysis for details. *Small pack size (-SP) is supplied either lyophilized or as a 0.2 µm filtered solution in PBS.

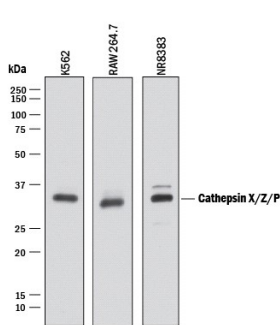
APPLICATIONS

Please Note: Optimal dilutions should be determined by each laboratory for each application. *General Protocols* are available in the *Technical Information* section on our website.

	Recommended Concentration	Sample
Western Blot	1 µg/mL	See Below
Immunohistochemistry	3-15 µg/mL	See Below
Immunoprecipitation	25 µg/mL	Conditioned cell culture medium spiked with Recombinant Human Cathepsin X/Z/P (Catalog # 934-CY), see our available Western blot detection antibodies
Simple Western	5 µg/mL	See Below

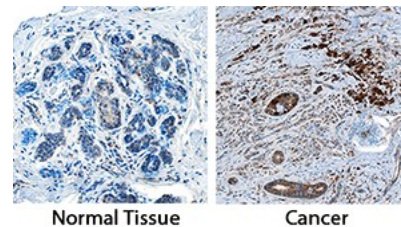
DATA

Western Blot



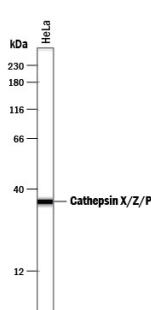
Detection of Human, Mouse, and Rat Cathepsin X/Z/P by Western Blot. Western blot shows lysates of K562 human chronic myelogenous leukemia cell line, RAW 264.7 mouse monocyte/macrophage cell line, and NR8383 rat alveolar macrophage cell line. PVDF membrane was probed with 1 µg/mL of Goat Anti-Human/Mouse/Rat Cathepsin X/Z/P Antigen Affinity-purified Polyclonal Antibody (Catalog # AF934) followed by HRP-conjugated Anti-Goat IgG Secondary Antibody (Catalog # HAF017). A specific band was detected for Cathepsin X/Z/P at approximately 34 kDa (as indicated). This experiment was conducted under reducing conditions and using [Immunoblot Buffer Group 1](#).

Immunohistochemistry



Cathepsin X/Z/P in Human Breast and Breast Cancer Tissue. Cathepsin X/Z/P was detected in immersion fixed paraffin-embedded sections of normal human breast and breast cancer tissue using Goat Anti-Human/Mouse/Rat Cathepsin X/Z/P Antigen Affinity-purified Polyclonal Antibody (Catalog # AF934) at 3 µg/mL overnight at 4 °C. Tissue was stained using the Anti-Goat HRP-DAB Cell & Tissue Staining Kit (brown; Catalog # CTS008) and counterstained with hematoxylin (blue). Specific staining was localized to stromal and endothelial cells. View our protocol for [Chromogenic IHC Staining of Paraffin-embedded Tissue Sections](#).

Simple Western



Detection of Human Cathepsin X/Z/P by Simple Western™. Simple Western lane view shows lysates of HeLa human cervical epithelial carcinoma cell line, loaded at 0.2 mg/mL. A specific band was detected for Cathepsin X/Z/P at approximately 36 kDa (as indicated) using 5 µg/mL of Goat Anti-Human/Mouse/Rat Cathepsin X/Z/P Antigen Affinity-purified Polyclonal Antibody (Catalog # AF934) followed by 1:50 dilution of HRP-conjugated Anti-Goat IgG Secondary Antibody (Catalog # HAF109). This experiment was conducted under reducing conditions and using the 12-230 kDa separation system.



PREPARATION AND STORAGE

Reconstitution	Reconstitute at 0.2 mg/mL in sterile PBS.
Shipping	The product is shipped at ambient temperature. Upon receipt, store it immediately at the temperature recommended below. *Small pack size (-SP) is shipped with polar packs. Upon receipt, store it immediately at -20 to -70 °C
Stability & Storage	<p>Use a manual defrost freezer and avoid repeated freeze-thaw cycles.</p> <ul style="list-style-type: none"> ● 12 months from date of receipt, -20 to -70 °C as supplied. ● 1 month, 2 to 8 °C under sterile conditions after reconstitution. ● 6 months, -20 to -70 °C under sterile conditions after reconstitution.

BACKGROUND

Cathepsin X (also known as Cathepsin Z and P) is a cysteine protease of the papain family (1-5). Compared to other members of the papain family, Cathepsin X has a short proregion and unique insertions. The cysteine residue in the proregion forms a covalent and reversible bond with the active site cysteine residue (6). Acting as a carboxypeptidase, Cathepsin X displays a unique specificity (7-10). It is ubiquitously expressed in human tissues and conserved in other species such as mouse, nematode and echinuran. The nematode enzyme is apparently involved in molting of third stage larvae (11).

References:

1. Nagler, D.K. and R. Menard (1998) FEBS Lett. **434**:135.
2. Santamaria, I. *et al.* (1998) J. Biol. Chem. **273**:16816.
3. Deussing, J. *et al.* (2000) Biochim. Biophys. Acta **1491**:93.
4. Pungercar, J. and G. Ivanovski (2000) Pflugers Arch. Eur. J. Physiol. **439**:R116.
5. Pungercar, J. *et al.* (2000) Pflugers Arch. Eur. J. Physiol. **439**:R119.
6. Sivaraman, J. *et al.* (2000) J. Mol. Biol. **295**:935.
7. Menard, R. *et al.* (2001) Biol. Chem. **382**:839.
8. Therrien, C. *et al.* (2001) Biochemistry **40**:2702.
9. Klemencic, I. *et al.* (2000) Eur. J. Biochem. **267**:5404.
10. Guncar, G. *et al.* (2000) Structure Fold Des. **8**:305.
11. Lustigman, S. *et al.* (1996) J. Biol. Chem. **271**:30181.