

## DESCRIPTION

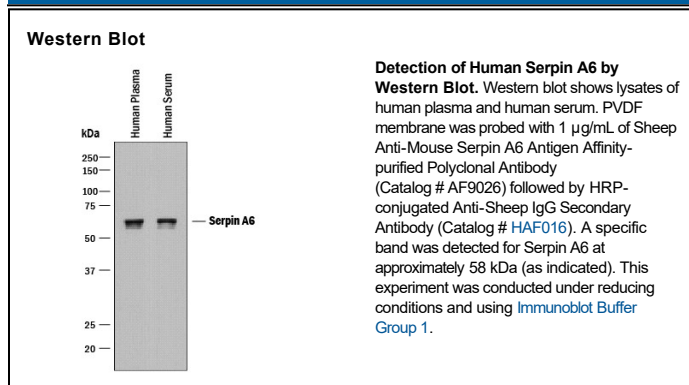
<b>Species Reactivity</b>	Human
<b>Specificity</b>	Detects human Serpin A6 in direct ELISAs and Western Blots. In direct ELISAs, less than 1% cross-reactivity with recombinant human (rh) Serpin A1, rhSerpin A3, and rhSerpin A4 is observed.
<b>Source</b>	Polyclonal Sheep IgG
<b>Purification</b>	Antigen Affinity-purified
<b>Immunogen</b>	Chinese hamster ovary cell line CHO-derived recombinant human Serpin A6 Met23-Val405 (Ser246Ala) Accession # P08185
<b>Formulation</b>	Lyophilized from a 0.2 µm filtered solution in PBS with Trehalose. See Certificate of Analysis for details. *Small pack size (-SP) is supplied either lyophilized or as a 0.2 µm filtered solution in PBS.

## APPLICATIONS

**Please Note:** Optimal dilutions should be determined by each laboratory for each application. [General Protocols](#) are available in the [Technical Information](#) section on our website.

	Recommended Concentration	Sample
<b>Western Blot</b>	1 µg/mL	See Below

## DATA



## PREPARATION AND STORAGE

<b>Reconstitution</b>	Reconstitute at 0.2 mg/mL in sterile PBS.
<b>Shipping</b>	The product is shipped at ambient temperature. Upon receipt, store it immediately at the temperature recommended below. *Small pack size (-SP) is shipped with polar packs. Upon receipt, store it immediately at -20 to -70 °C
<b>Stability &amp; Storage</b>	<b>Use a manual defrost freezer and avoid repeated freeze-thaw cycles.</b> <ul style="list-style-type: none"> <li>● 12 months from date of receipt, -20 to -70 °C as supplied.</li> <li>● 1 month, 2 to 8 °C under sterile conditions after reconstitution.</li> <li>● 6 months, -20 to -70 °C under sterile conditions after reconstitution.</li> </ul>

## BACKGROUND

Serpin A6, also known as Corticosteroid-binding Globulin/CBG and Transcortin, is a 45-60 kDa secreted glycoprotein member of the clade A serpin family of protease inhibitors. Although it is a serpin family member, it shows no protease inhibition. Serpin A6 is produced principally by hepatocytes, but is also expressed by hypothalamic neurons and anterior pituitary endocrine cells. Serpin A6 transports progesterone and > 90% of circulating cortisol, and likely has three functions: first it can be cleaved, releasing cortisol to the tissues; second, it regulates levels of free hormone available over time; and third, it likely binds to specific cell-surface receptors when complexed to cortisol. Human Serpin A6 is 405 amino acids (aa) in length. Over aa 23-396, human Serpin A6 shares 57% and 60% aa sequence identity with mouse and rat Serpin A6, respectively.