

## DESCRIPTION

<b>Species Reactivity</b>	Human/Mouse/Rat
<b>Specificity</b>	Detects human, mouse, and rat p70 S6K and p85 S6K (also known as p70 S6K $\alpha$ 1), an isoform with 23 extra residues at the N-terminus. Reactivity with $\beta$ isoforms of p70 S6K is unknown.
<b>Source</b>	Polyclonal Rabbit IgG
<b>Purification</b>	Antigen Affinity-purified
<b>Immunogen</b>	<i>E. coli</i> -derived recombinant human p70 S6K Accession # M60725
<b>Formulation</b>	Lyophilized from a 0.2 $\mu$ m filtered solution in PBS with Trehalose. See Certificate of Analysis for details. *Small pack size (-SP) is supplied as a 0.2 $\mu$ m filtered solution in PBS.

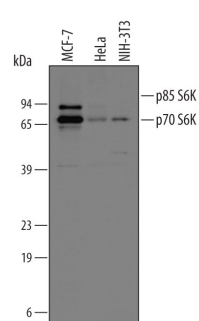
## APPLICATIONS

**Please Note:** Optimal dilutions should be determined by each laboratory for each application. *General Protocols* are available in the *Technical Information* section on our website.

	Recommended Concentration	Sample
<b>Western Blot</b>	0.2 $\mu$ g/mL	See Below
<b>Immunohistochemistry</b>	5-15 $\mu$ g/mL	See Below
<b>Intracellular Staining by Flow Cytometry</b>	2.5 $\mu$ g/ $10^6$ cells	See Below
<b>Simple Western</b>	2 $\mu$ g/mL	See Below
<b>CyTOF-ready</b>	Ready to be labeled using established conjugation methods. No BSA or other carrier proteins that could interfere with conjugation.	

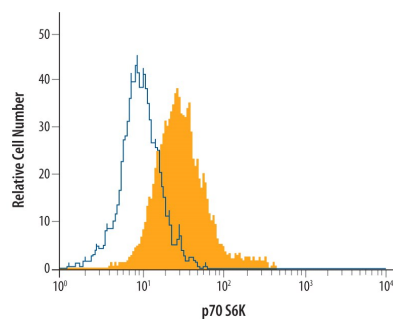
## DATA

### Western Blot



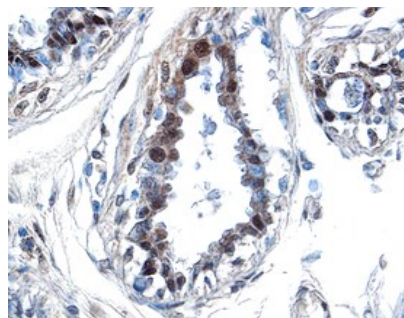
**Detection of Human and Mouse p70 S6 Kinase by Western Blot.** Western blot shows lysates of MCF-7 human breast cancer cell line, HeLa human cervical epithelial carcinoma cell line, and NIH-3T3 mouse embryonic fibroblast cell line. PVDF membrane was probed with 0.2  $\mu$ g/mL of Rabbit Anti-Human/Mouse/Rat p70 S6 Kinase Antigen Affinity-purified Polyclonal Antibody (Catalog # AF8962) followed by HRP-conjugated Anti-Rabbit IgG Secondary Antibody (Catalog # HAF008). A specific band was detected for p70 S6 Kinase at approximately 70 and 90 kDa (as indicated). This experiment was conducted under reducing conditions and using [Immunoblot Buffer Group 1](#).

### Intracellular Staining by Flow Cytometry



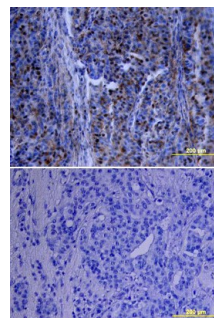
**Detection of p70 S6 Kinase in HeLa Human Cell Line by Flow Cytometry.** HeLa human cervical epithelial carcinoma cell line was stained with Rabbit Anti-Human/Mouse/Rat p70 S6 Kinase Antigen Affinity-purified Polyclonal Antibody (Catalog # AF8962, filled histogram) or control antibody (Catalog # AB-105-C, open histogram), followed by Phycoerythrin-conjugated Anti-Rabbit IgG Secondary Antibody (Catalog # F0110). To facilitate intracellular staining, cells were fixed with paraformaldehyde and permeabilized with methanol.

### Immunohistochemistry



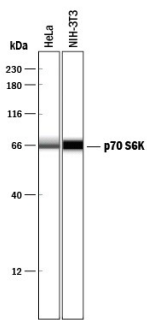
**p70 S6 Kinase in Human Breast Cancer Tissue.** p70 S6 Kinase was detected in immersion fixed paraffin-embedded sections of human breast cancer tissue using Rabbit Anti-Human/Mouse/Rat p70 S6 Kinase Antigen Affinity-purified Polyclonal Antibody (Catalog # AF8962) at 1.7  $\mu$ g/mL overnight at 4  $^{\circ}$ C. Tissue was stained using the Anti-Rabbit HRP-DAB Cell & Tissue Staining Kit (brown; Catalog # CTS005) and counterstained with hematoxylin (blue). Specific labeling was localized to the nuclei of epithelial cells. View our protocol for [Chromogenic IHC Staining of Paraffin-embedded Tissue Sections](#).

### Immunohistochemistry



**p70 S6 Kinase in Human Breast Cancer Tissue.** p70 S6 Kinase was detected in immersion fixed paraffin-embedded sections of human breast cancer tissue using Rabbit Anti-Human/Mouse/Rat p70 S6 Kinase Antigen Affinity-purified Polyclonal Antibody (Catalog # AF8962) at 15  $\mu$ g/mL overnight at 4  $^{\circ}$ C. Tissue was stained using the Anti-Rabbit HRP-DAB Cell & Tissue Staining Kit (brown; Catalog # CTS005) and counterstained with hematoxylin (blue). Lower panel shows a lack of labeling if primary antibodies are omitted and tissue is stained only with secondary antibody followed by incubation with detection reagents. View our protocol for [Chromogenic IHC Staining of Paraffin-embedded Tissue Sections](#).

## Simple Western



**Detection of p70 S6 Kinase by Simple Western™.** Simple Western lane view shows lysates of HeLa human cervical epithelial carcinoma cell line and NIH-3T3 mouse embryonic fibroblast cell line, loaded at 0.2 mg/mL. A specific band was detected for p70 S6 Kinase at approximately 66 kDa (as indicated) using 2 µg/mL of Rabbit Anti-Human/Mouse/Rat p70 S6 Kinase Antigen Affinity-purified Polyclonal Antibody (Catalog # AF8962). This experiment was conducted under reducing conditions and using the 12-230 kDa separation system.



## PREPARATION AND STORAGE

<b>Reconstitution</b>	Reconstitute at 0.2 mg/mL in sterile PBS.
<b>Shipping</b>	The product is shipped at ambient temperature. Upon receipt, store it immediately at the temperature recommended below. *Small pack size (-SP) is shipped with polar packs. Upon receipt, store it immediately at -20 to -70 °C
<b>Stability &amp; Storage</b>	<p><b>Use a manual defrost freezer and avoid repeated freeze-thaw cycles.</b></p> <ul style="list-style-type: none"> <li>● 12 months from date of receipt, -20 to -70 °C as supplied.</li> <li>● 1 month, 2 to 8 °C under sterile conditions after reconstitution.</li> <li>● 6 months, -20 to -70 °C under sterile conditions after reconstitution.</li> </ul>