

## DESCRIPTION

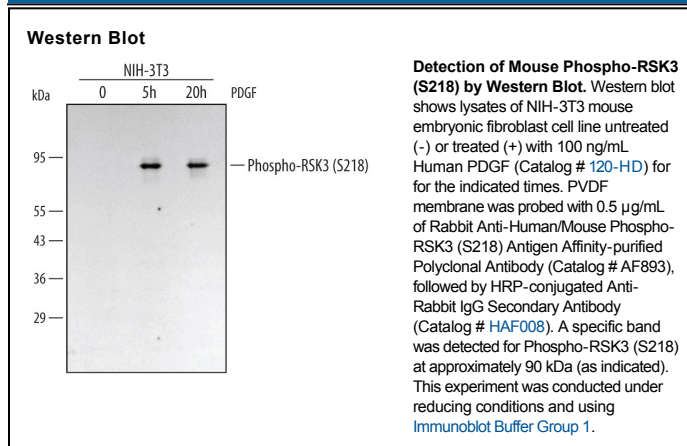
<b>Species Reactivity</b>	Human/Mouse
<b>Specificity</b>	Detects human and mouse RSK3 when phosphorylated at S218. Reactivity with other RSK isoforms when phosphorylated at corresponding sites is unknown.
<b>Source</b>	Polyclonal Rabbit IgG
<b>Purification</b>	Antigen Affinity-purified
<b>Immunogen</b>	Phosphopeptide containing human and mouse RSK3 S218 site
<b>Formulation</b>	Supplied as a 0.2 µm filtered solution in PBS. See Certificate of Analysis for details. *Small pack size (-SP) is supplied as a 0.2 µm filtered solution in PBS.

## APPLICATIONS

**Please Note:** Optimal dilutions should be determined by each laboratory for each application. *General Protocols* are available in the *Technical Information* section on our website.

	<b>Recommended Concentration</b>	<b>Sample</b>
<b>Western Blot</b>	0.5 µg/mL	See Below
<b>Immunohistochemistry</b>	5-15 µg/mL	Immersion fixed frozen sections of mouse embryo (E13-15)

## DATA



## PREPARATION AND STORAGE

<b>Shipping</b>	The product is shipped with dry ice or equivalent. Upon receipt, store it immediately at the temperature recommended below. *Small pack size (-SP) is shipped with polar packs. Upon receipt, store it immediately at -20 to -70 °C
<b>Stability &amp; Storage</b>	<p><b>Use a manual defrost freezer and avoid repeated freeze-thaw cycles.</b></p> <ul style="list-style-type: none"> <li>● 12 months from date of receipt, -20 to -70 °C, as supplied.</li> <li>● 1 month, 2 to 8 °C under sterile conditions after opening.</li> <li>● 6 months, -20 to -70 °C under sterile conditions after opening.</li> </ul>