

DESCRIPTION

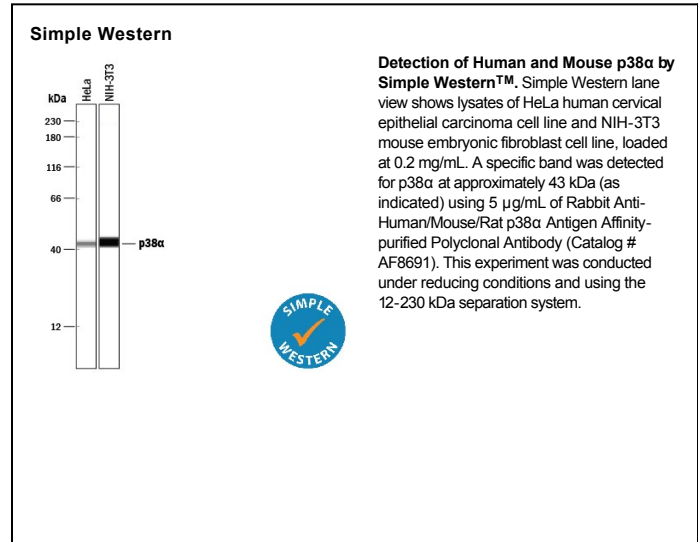
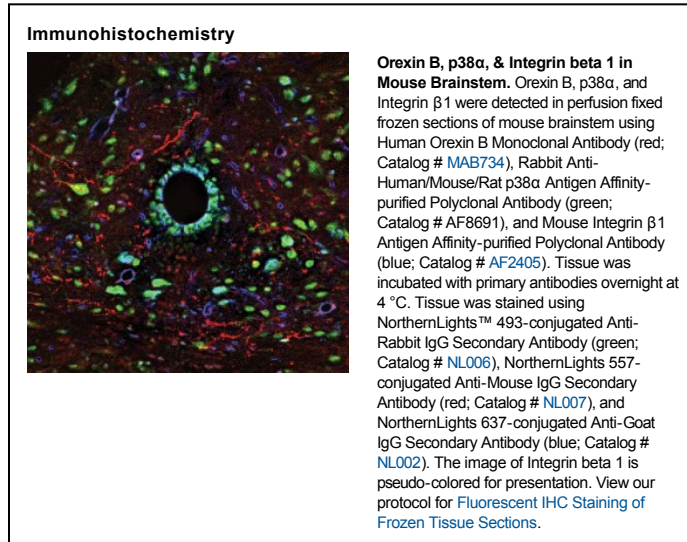
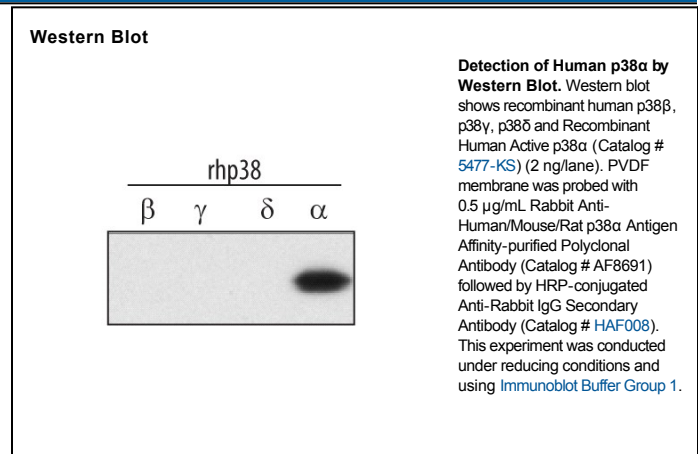
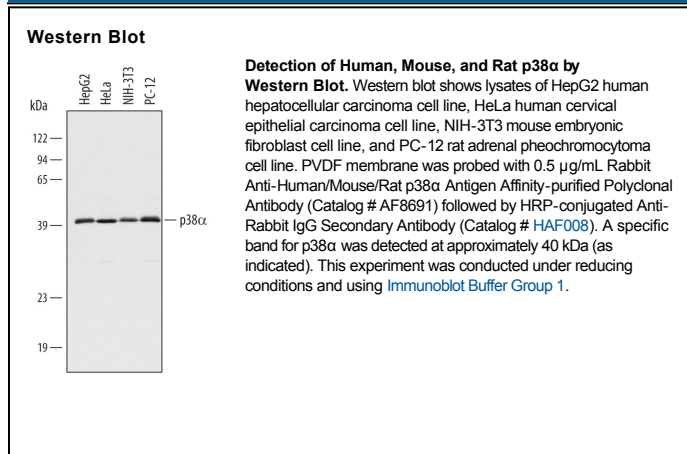
Species Reactivity	Human/Mouse/Rat
Specificity	Detects human, mouse and rat p38 α . Does not detect recombinant human p38 β , p38 γ or p38 δ .
Source	Polyclonal Rabbit IgG
Purification	Antigen and protein A Affinity-purified
Immunogen	<i>E. coli</i> -derived recombinant human p38 α Met1-Ser360 Accession # Q16539
Formulation	Lyophilized from a 0.2 μ m filtered solution in PBS with Trehalose. See Certificate of Analysis for details. *Small pack size (-SP) is supplied as a 0.2 μ m filtered solution in PBS.

APPLICATIONS

Please Note: Optimal dilutions should be determined by each laboratory for each application. *General Protocols* are available in the *Technical Information* section on our website.

	Recommended Concentration	Sample
Western Blot	0.5 μ g/mL	See Below
Immunohistochemistry	5-15 μ g/mL	See Below
Simple Western	5 μ g/mL	See Below

DATA



PREPARATION AND STORAGE

Reconstitution Reconstitute at 0.2 mg/mL in sterile PBS.

Shipping The product is shipped at ambient temperature. Upon receipt, store it immediately at the temperature recommended below.
*Small pack size (-SP) is shipped with polar packs. Upon receipt, store it immediately at -20 to -70 °C

Stability & Storage Use a manual defrost freezer and avoid repeated freeze-thaw cycles.

- 12 months from date of receipt, -20 to -70 °C as supplied.
- 1 month, 2 to 8 °C under sterile conditions after reconstitution.
- 6 months, -20 to -70 °C under sterile conditions after reconstitution.

BACKGROUND

The p38 Mitogen-activated Protein Kinases (MAPKs) are a family of four related Ser/Thr kinases activated by proinflammatory cytokines and environmental stresses, such as UV irradiation and heat shock. Stress signals are delivered to this cascade by members of small GTPases of the Rho family (Rac, Rho, Cdc42). p38 MAPK is involved in the regulation of Hsp27 and MAPKAP-2 and several transcription factors including ATF2, STAT1, and indirectly CREB via activation of MSK1. The p38 MAPK protein also plays a role in cell differentiation, autophagy and apoptosis. Mkk3 and SEK can activate p38 MAPK by phosphorylation at Thr180 and Tyr182, which in turn activates the MAPKAP kinase 2 and regulating phosphorylation of ATF2, Mac and MEF2.