

DESCRIPTION

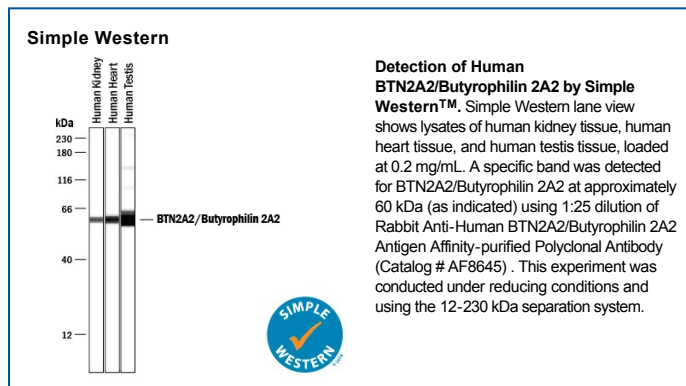
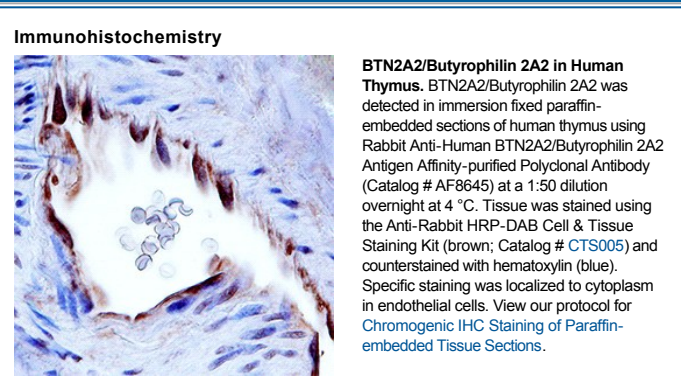
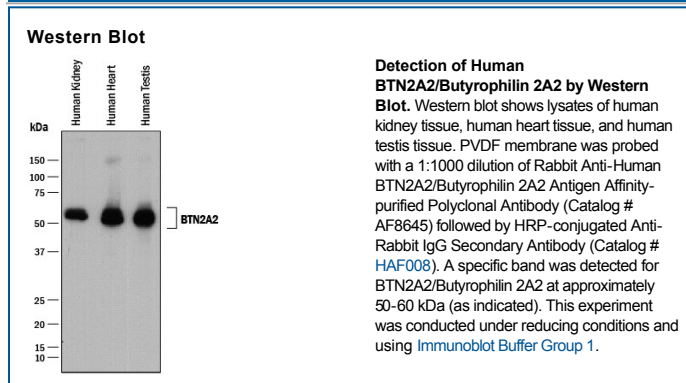
Species Reactivity	Human
Specificity	Detects human BTN2A2/Butyrophilin 2A2 in direct ELISAs and Western blots. In direct ELISAs, approximately 20% cross-reactivity with recombinant mouse BTN2A2 is observed, less than 5% cross-reactivity with recombinant human (rh) BTN2A1 and rhBTN3A2 is observed, and less than 1% cross-reactivity with rhBTN1A1 is observed.
Source	Polyclonal Rabbit IgG
Purification	Antigen Affinity-purified
Immunogen	<i>E. coli</i> -derived recombinant human BTN2A2/Butyrophilin 2A2 Phe34-Val237 Accession # Q8WVV5
Formulation	Supplied as a solution in PBS containing BSA, Glycerol and Sodium Azide See Certificate of Analysis for details. *Small pack size (-SP) is supplied either lyophilized or as a 0.2 µm filtered solution in PBS.

APPLICATIONS

Please Note: Optimal dilutions should be determined by each laboratory for each application. *General Protocols* are available in the *Technical Information* section on our website.

	Recommended Concentration	Sample
Western Blot	1:1000 dilution	See Below
Immunohistochemistry	1:50 dilution	See Below
Simple Western	1:25 dilution	See Below

DATA



PREPARATION AND STORAGE

Shipping	The product is shipped with polar packs. Upon receipt, store it immediately at the temperature recommended below. *Small pack size (-SP) is shipped with polar packs. Upon receipt, store it immediately at -20 to -70 °C
Stability & Storage	Use a manual defrost freezer and avoid repeated freeze-thaw cycles. <ul style="list-style-type: none"> ● 12 months from date of receipt, -20 to -70 °C, as supplied. ● 1 month, 2 to 8 °C under sterile conditions after opening. ● 6 months, -20 to -70 °C under sterile conditions after opening.

BACKGROUND

Butyrophilin subfamily 2 member A2 (BTN2A2) is a protein encoded by the BTN2A2 gene and is the major protein associated with fat droplets in the milk. This gene is a member of the BTN2 subfamily of genes, which encode proteins belonging to the butyrophilin protein family. The gene is located in a cluster on chromosome 6, consisting of seven genes belonging to the expanding B7/butyrophilin-like group, a subset of the immunoglobulin gene superfamily. The encoded protein is a type 1 receptor glycoprotein involved in lipid, fatty-acid and sterol metabolism. Several alternatively spliced transcript variants of this gene have been described.

PRODUCT SPECIFIC NOTICES

* Contains <0.1% Sodium Azide, which is not hazardous at this concentration according to GHS classifications. Refer to SDS for additional information and handling instructions.