

DESCRIPTION

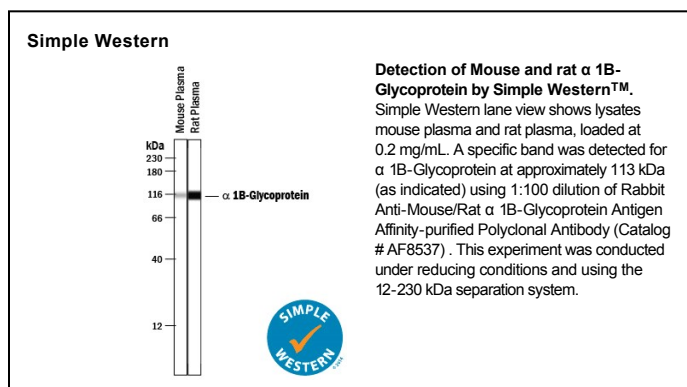
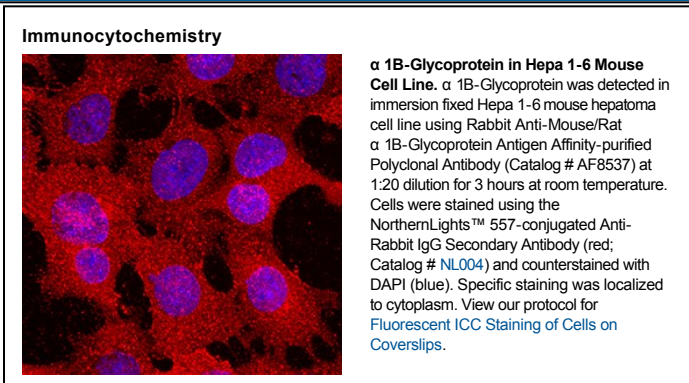
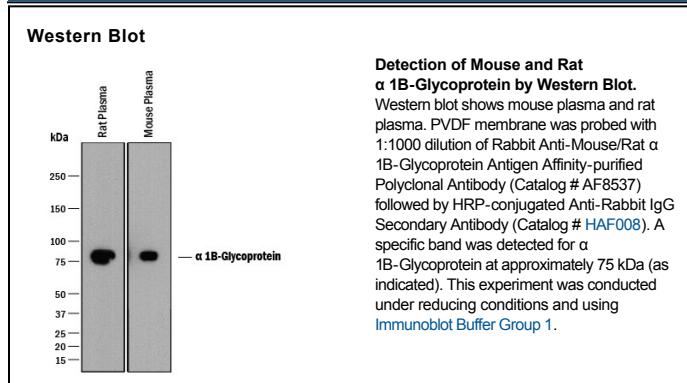
Species Reactivity	Mouse/Rat
Specificity	Detects mouse and rat α 1B-Glycoprotein in direct ELISAs and Western blots. In direct ELISAs, less than 1% cross-reactivity with recombinant human α 1B-Glycoprotein observed.
Source	Polyclonal Rabbit IgG
Purification	Antigen Affinity-purified
Immunogen	Mouse myeloma cell line NS0-derived recombinant mouse α 1B-Glycoprotein Leu21-Gly512 Accession # Q19LI2
Formulation	Supplied as a solution in PBS containing BSA, Glycerol and Sodium Azide. See Certificate of Analysis for details. *Small pack size (-SP) is supplied as a 0.2 μ m filtered solution in PBS.

APPLICATIONS

Please Note: Optimal dilutions should be determined by each laboratory for each application. *General Protocols* are available in the *Technical Information* section on our website.

	Recommended Concentration	Sample
Western Blot	1:1000 dilution	See Below
Immunocytochemistry	1:20-1:50 dilution	See Below
Simple Western	1:100 dilution	See Below

DATA



PREPARATION AND STORAGE

Shipping	The product is shipped with polar packs. Upon receipt, store it immediately at the temperature recommended below. *Small pack size (-SP) is shipped with polar packs. Upon receipt, store it immediately at -20 to -70 °C
Stability & Storage	Use a manual defrost freezer and avoid repeated freeze-thaw cycles. <ul style="list-style-type: none"> • 12 months from date of receipt, -20 to -70 °C, as supplied. • 1 month, 2 to 8 °C under sterile conditions after opening. • 6 months, -20 to -70 °C under sterile conditions after opening.

BACKGROUND

The α 1B-Glycoprotein is a plasma glycoprotein, encoded by the A1BG gene with an unknown function. The protein shows sequence similarity to the variable regions of some immunoglobulin supergene family member proteins.

PRODUCT SPECIFIC NOTICES

* Contains <0.1% Sodium Azide, which is not hazardous at this concentration according to GHS classifications. Refer to SDS for additional information and handling instructions.