

DESCRIPTION

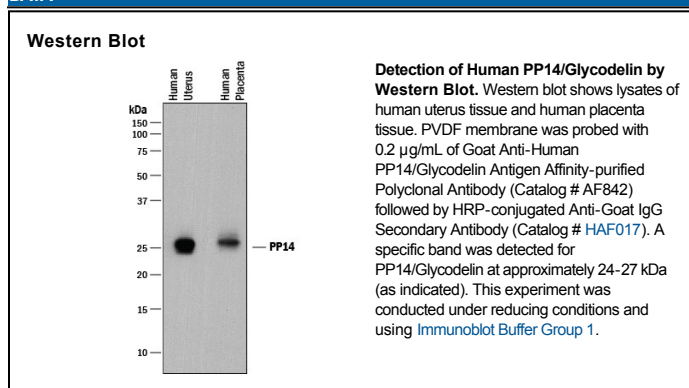
Species Reactivity	Human
Specificity	Detects human PP14/Glycodelin in direct ELISAs and Western blots.
Source	Polyclonal Goat IgG
Purification	Antigen Affinity-purified
Immunogen	Mouse myeloma cell line NS0-derived recombinant human PP14/Glycodelin Met19-Phe180 (Glu95Gly) Accession # P09466
Formulation	Lyophilized from a 0.2 µm filtered solution in PBS with Trehalose. See Certificate of Analysis for details. *Small pack size (-SP) is supplied as a 0.2 µm filtered solution in PBS.

APPLICATIONS

Please Note: Optimal dilutions should be determined by each laboratory for each application. *General Protocols* are available in the *Technical Information* section on our website.

	Recommended Concentration	Sample
Western Blot	0.2 µg/mL	See Below

DATA



PREPARATION AND STORAGE

Reconstitution	Reconstitute at 0.2 mg/mL in sterile PBS.
Shipping	The product is shipped at ambient temperature. Upon receipt, store it immediately at the temperature recommended below. *Small pack size (-SP) is shipped with polar packs. Upon receipt, store it immediately at -20 to -70 °C
Stability & Storage	Use a manual defrost freezer and avoid repeated freeze-thaw cycles. <ul style="list-style-type: none"> ● 12 months from date of receipt, -20 to -70 °C as supplied. ● 1 month, 2 to 8 °C under sterile conditions after reconstitution. ● 6 months, -20 to -70 °C under sterile conditions after reconstitution.

BACKGROUND

Placenta Protein 14 (PP14, also known as Glycodelin-A) is a 28-kDa glycoprotein that is mainly expressed by late secretory-phase endometrium and first-trimester gestational endometrium. It is present at high levels in amniotic fluid, and in the serum of pregnant women. PP14 has been reported to have immuno- suppressive activity that may play a role in fetal survival during pregnancy.