

DESCRIPTION

Species Reactivity	Human/Mouse
Specificity	Detects human and mouse Bax.
Source	Polyclonal Rabbit IgG
Purification	Antigen Affinity-purified
Immunogen	KLH-coupled human Bax synthetic peptide GPTSSEQIMKTGALLLQGFQDC
Formulation	Lyophilized from a 0.2 µm filtered solution in PBS with Trehalose. See Certificate of Analysis for details. *Small pack size (-SP) is supplied either lyophilized or as a 0.2 µm filtered solution in PBS.

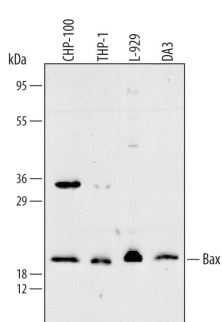
APPLICATIONS

Please Note: Optimal dilutions should be determined by each laboratory for each application. *General Protocols* are available in the *Technical Information* section on our website.

	Recommended Concentration	Sample
Western Blot	0.3 µg/mL	See Below
Immunocytochemistry	1-15 µg/mL	See Below
Immunohistochemistry	5-15 µg/mL	See Below
Knockout Validated	Bax is specifically detected in HeLa human cervical epithelial carcinoma parental cell line but is not detectable in Bax knockout HeLa cell line.	

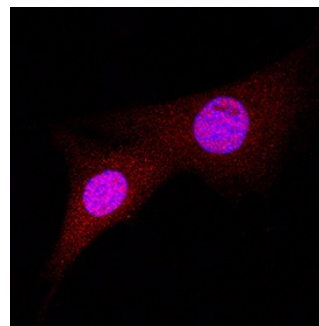
DATA

Western Blot



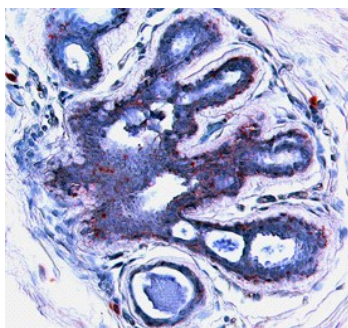
Detection of Human/Mouse Bax by Western Blot. Western blot shows lysates of CHP-100 human neuroblastoma cell line, THP-1 human acute monocytic leukemia cell line, L-929 mouse fibroblast cell line, and DA3 mouse myeloma cell line. PVDF membrane was probed with 0.3 µg/mL of Rabbit Anti-Human/Mouse Bax Antigen Affinity-purified Polyclonal Antibody (Catalog # AF820) followed by HRP-conjugated Anti-Rabbit IgG Secondary Antibody (Catalog # HAF008). A specific band was detected for Bax at approximately 21 kDa (as indicated). This experiment was conducted under reducing conditions and using Immunoblot Buffer Group 2.

Immunocytochemistry



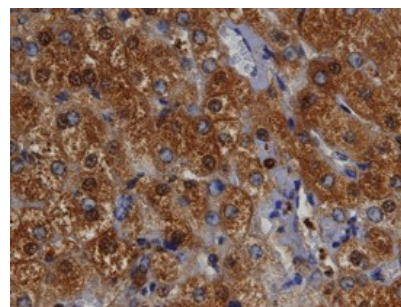
Bax in A549 Human Cell Line. Bax was detected in immersion fixed A549 human lung carcinoma cell line using Rabbit Anti-Human/Mouse Bax Antigen Affinity-purified Polyclonal Antibody (Catalog # AF820) at 1.7 µg/mL for 3 hours at room temperature. Cells were stained using the NorthernLights™ 567-conjugated Anti-Rabbit IgG Secondary Antibody (red; Catalog # NL004) and counterstained with DAPI (blue). Specific staining was localized to cytoplasm and nuclei. View our protocol for [Fluorescent ICC Staining of Cells on Coverslips](#).

Immunohistochemistry



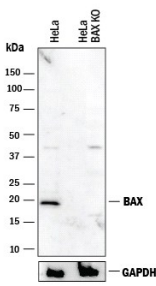
Bax in Human Breast. Bax was detected in immersion fixed paraffin-embedded sections of human breast using 15 µg/mL Rabbit Anti-Human/Mouse Bax Antigen Affinity-purified Polyclonal Antibody (Catalog # AF820) overnight at 4 °C. Tissue was stained (red) and counterstained with hematoxylin (blue). View our protocol for [Chromogenic IHC Staining of Paraffin-embedded Tissue Sections](#).

Immunohistochemistry



Bax in Human Liver. Bax was detected in immersion fixed paraffin-embedded sections of human liver using 10 µg/mL Rabbit Anti-Human/Mouse Bax Antigen Affinity-purified Polyclonal Antibody (Catalog # AF820) overnight at 4 °C. Tissue was stained with the Anti-Rabbit HRP-DAB Cell & Tissue Staining Kit (brown; Catalog # CTS005) and counterstained with hematoxylin (blue). View our protocol for [Chromogenic IHC Staining of Paraffin-embedded Tissue Sections](#).

Knockout Validated



Western Blot Shows Human Bax Specificity by Using Knockout Cell Line.

Western blot shows lysates of HeLa human cervical epithelial carcinoma parental cell line and Bax knockout HeLa cell line (KO). PVDF membrane was probed with 0.5 µg/mL of Rabbit Anti-Human/Mouse Bax Antigen Affinity-purified Polyclonal Antibody (Catalog # AF820) followed by HRP-conjugated Anti-Rabbit IgG Secondary Antibody (Catalog # HAF008). A specific band was detected for Bax at approximately 20 kDa (as indicated) in the parental HeLa cell line, but is not detectable in knockout HeLa cell line. GAPDH (Catalog # AF5718) is shown as a loading control. This experiment was conducted under reducing conditions and using Immunoblot Buffer Group 1.

PREPARATION AND STORAGE

Reconstitution	Reconstitute at 0.2 mg/mL in sterile PBS.
Shipping	The product is shipped at ambient temperature. Upon receipt, store it immediately at the temperature recommended below. *Small pack size (-SP) is shipped with polar packs. Upon receipt, store it immediately at -20 to -70 °C
Stability & Storage	Use a manual defrost freezer and avoid repeated freeze-thaw cycles. <ul style="list-style-type: none"> ● 12 months from date of receipt, -20 to -70 °C as supplied. ● 1 month, 2 to 8 °C under sterile conditions after reconstitution. ● 6 months, -20 to -70 °C under sterile conditions after reconstitution.

BACKGROUND

Bax belongs to the Bcl2 protein family. It forms homodimers and heterodimers with Bcl2 and functions as an apoptotic activator. Bax interacts with the mitochondrial voltage dependent anion channel and promotes the release of cytochrome c.