

DESCRIPTION

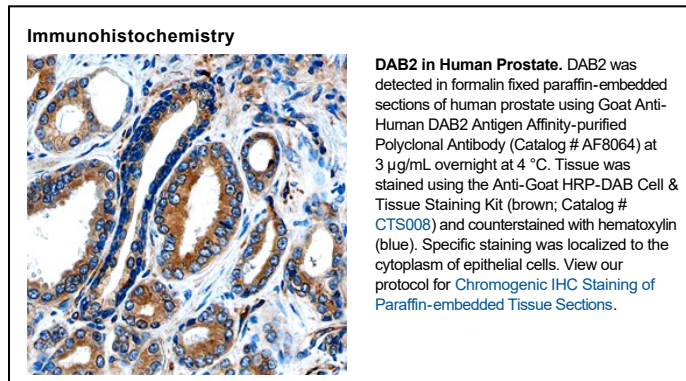
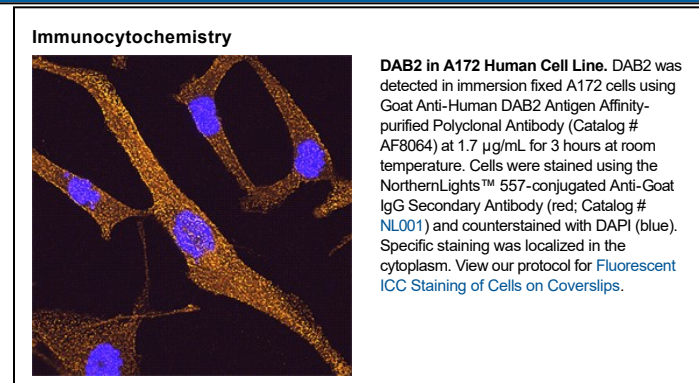
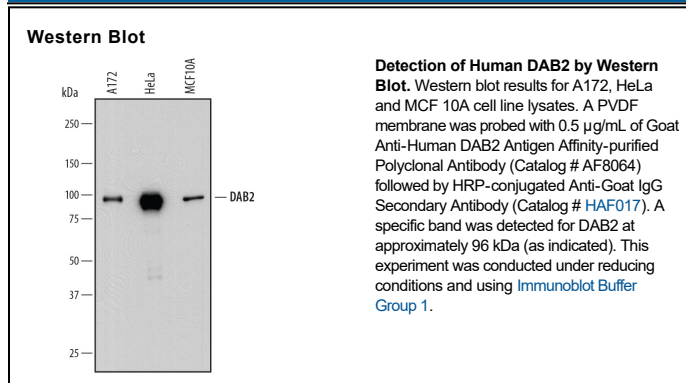
Species Reactivity	Human
Specificity	Detects human DAB2 in direct ELISAs and Western blots.
Source	Polyclonal Goat IgG
Purification	Antigen Affinity-purified
Immunogen	<i>E. coli</i> -derived recombinant human DAB2 Lys630-Ala770 Accession # P98082
Formulation	Lyophilized from a 0.2 µm filtered solution in PBS with Trehalose. See Certificate of Analysis for details. *Small pack size (-SP) is supplied either lyophilized or as a 0.2 µm filtered solution in PBS.

APPLICATIONS

Please Note: Optimal dilutions should be determined by each laboratory for each application. *General Protocols* are available in the *Technical Information* section on our website.

	Recommended Concentration	Sample
Western Blot	0.5 µg/mL	See Below
Immunocytochemistry	5-15 µg/mL	See Below
Immunohistochemistry	5-15 µg/mL	See Below

DATA



PREPARATION AND STORAGE

Reconstitution	Reconstitute at 0.2 mg/mL in sterile PBS.
Shipping	The product is shipped at ambient temperature. Upon receipt, store it immediately at the temperature recommended below. *Small pack size (-SP) is shipped with polar packs. Upon receipt, store it immediately at -20 to -70 °C
Stability & Storage	Use a manual defrost freezer and avoid repeated freeze-thaw cycles. <ul style="list-style-type: none"> • 12 months from date of receipt, -20 to -70 °C as supplied. • 1 month, 2 to 8 °C under sterile conditions after reconstitution. • 6 months, -20 to -70 °C under sterile conditions after reconstitution.

BACKGROUND

DAB2 (Drosophila disabled homolog 2; also DOC-2/Differentially-expressed in Ovarian Carcinoma and p96) is a cytoplasmic phosphoprotein. Although its predicted MW is 82 kDa, it runs anomalously at 95-105 kDa in SDS-PAGE. It is widely expressed, being found in ovarian cuboidal epithelium, megakaryocytes, fibroblasts, macrophages, breast epithelium and renal proximal tubule cells. Reduced expression levels are associated with tumor development. DAB2 has multiple functions, but is typically described as an adaptor protein (i.e.-one that supports the apposition of two interacting molecules) involved in intracellular trafficking. Molecules reported to interact with DAB2 include megalin, SMAD2 plus TGF- β R1/II, axin and Dvl3. With respect to trafficking, DAB2 reportedly binds to AP-2, clathrin, LRP6 and myosin VI, four molecules associated with the endocytic process. Human DAB2 is 770 amino acids (aa) in length. It contains one pleckstrin homology-like domain that binds phosphotyrosine (aa 42-170) and a C-terminal Pro-rich region that binds SH3 domains (aa 600-630). There are two isoform variants. One is 80-82 kDa in size and shows a deletion of aa 230-447. The second exhibits a short deletion of aa 209-229. Over aa 630-770, human DAB2 shares 76% aa sequence identity with mouse DAB2.