

DESCRIPTION

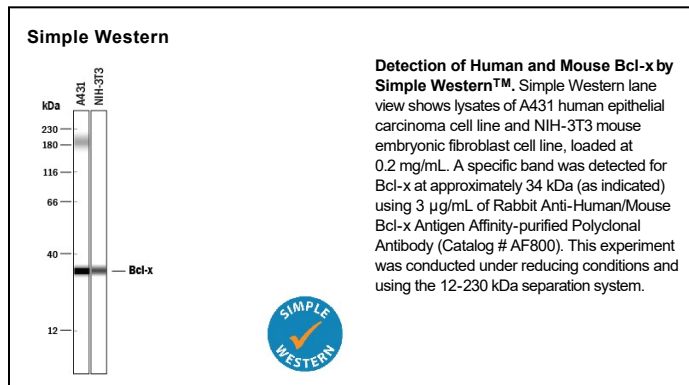
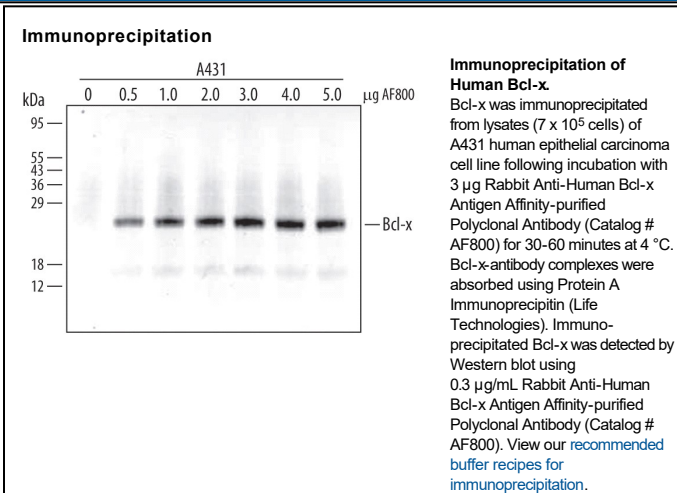
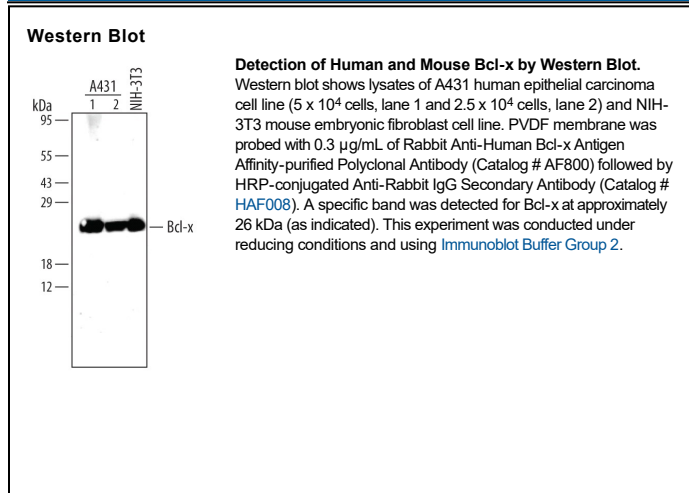
Species Reactivity	Human/Mouse
Specificity	Detects human and mouse Bcl-x in Western blots.
Source	Polyclonal Rabbit IgG
Purification	Antigen Affinity-purified
Immunogen	KLH-coupled Bcl-x synthetic peptide CSAINGNPSWHLADSPAVNGA
Formulation	Lyophilized from a 0.2 µm filtered solution in PBS with Trehalose. See Certificate of Analysis for details. *Small pack size (-SP) is supplied either lyophilized or as a 0.2 µm filtered solution in PBS.

APPLICATIONS

Please Note: Optimal dilutions should be determined by each laboratory for each application. [General Protocols](#) are available in the [Technical Information](#) section on our website.

	Recommended Concentration	Sample
Western Blot	0.3 µg/mL	See Below
Immunoprecipitation	5 µg/10 ⁶ cells	See Below
Simple Western	3 µg/mL	See Below

DATA



PREPARATION AND STORAGE

Reconstitution	Reconstitute at 0.2 mg/mL in sterile PBS.
Shipping	The product is shipped at ambient temperature. Upon receipt, store it immediately at the temperature recommended below. *Small pack size (-SP) is shipped with polar packs. Upon receipt, store it immediately at -20 to -70 °C
Stability & Storage	Use a manual defrost freezer and avoid repeated freeze-thaw cycles. <ul style="list-style-type: none"> • 12 months from date of receipt, -20 to -70 °C as supplied. • 1 month, 2 to 8 °C under sterile conditions after reconstitution. • 6 months, -20 to -70 °C under sterile conditions after reconstitution.

BACKGROUND

The peptide corresponds to amino acids 49-68 of human and mouse, long and short forms of Bcl-x. The sequence used for immunization differs significantly from the sequences of the corresponding region of other members of the Bcl-2 family. Cysteine was added to the amino-terminal for coupling to KLH and for coupling to an affinity matrix.