

DESCRIPTION

Species Reactivity	Human
Specificity	Detects human BATF3 in direct ELISAs and Western blots. In direct ELISAs, approximately 45% cross-reactivity with recombinant mouse BATF3 is observed, and less than 2% cross-reactivity with recombinant human BATF is observed.
Source	Polyclonal Sheep IgG
Purification	Antigen Affinity-purified
Immunogen	<i>E. coli</i> -derived recombinant human BATF3 Met1-Arg127 Accession # Q9NR55
Formulation	Lyophilized from a 0.2 µm filtered solution in PBS with Trehalose. See Certificate of Analysis for details. *Small pack size (-SP) is supplied as a 0.2 µm filtered solution in PBS.

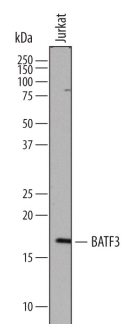
APPLICATIONS

Please Note: Optimal dilutions should be determined by each laboratory for each application. *General Protocols* are available in the *Technical Information* section on our website.

	Recommended Concentration	Sample
Western Blot	1 µg/mL	See Below
Immunocytochemistry	5-15 µg/mL	See Below

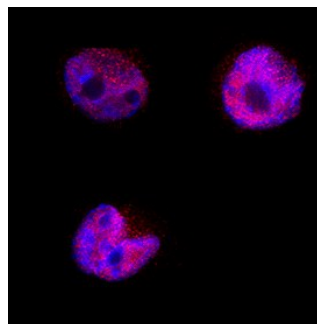
DATA

Western Blot



Detection of Human BATF3 by Western Blot. Western blot shows lysates of Jurkat human acute T cell leukemia cell line. PVDF membrane was probed with 1 µg/mL of Sheep Anti-Human BATF3 Antigen Affinity-purified Polyclonal Antibody (Catalog # AF7437) followed by HRP-conjugated Anti-Sheep IgG Secondary Antibody (Catalog # HAF016). A specific band was detected for BATF3 at approximately 17 kDa (as indicated). This experiment was conducted under reducing conditions and using Immunoblot Buffer Group 1.

Immunocytochemistry



BATF3 in HDLM-2 Human Cell Line. BATF3 was detected in immersion fixed HDLM-2 human Hodgkin's lymphoma cell line using Sheep Anti-Human BATF3 Antigen Affinity-purified Polyclonal Antibody (Catalog # AF7437) at 5 µg/mL for 3 hours at room temperature. Cells were stained using the NorthernLights™ 557-conjugated Anti-Sheep IgG Secondary Antibody (red; Catalog # NL010) and counterstained with DAPI (blue). Specific staining was localized to cytoplasm and nuclei. View our protocol for [Fluorescent ICC Staining of Non-adherent Cells](#).

PREPARATION AND STORAGE

Reconstitution	Sterile PBS to a final concentration of 0.2 mg/mL.
Shipping	The product is shipped at ambient temperature. Upon receipt, store it immediately at the temperature recommended below. *Small pack size (-SP) is shipped with polar packs. Upon receipt, store it immediately at -20 to -70 °C
Stability & Storage	Use a manual defrost freezer and avoid repeated freeze-thaw cycles. <ul style="list-style-type: none"> ● 12 months from date of receipt, -20 to -70 °C as supplied. ● 1 month, 2 to 8 °C under sterile conditions after reconstitution. ● 6 months, -20 to -70 °C under sterile conditions after reconstitution.

BACKGROUND

BATF3 (Basic leucine zipper transcriptional factor ATF-like 3; also p21SNFT) is a 20 kDa nuclear member of the bZIP family of proteins. It is expressed in Th1 cells and conventional dendritic cells (CD11c⁺), and serves to downregulate AP-1 mediated transcription. BATF3 accomplishes this by heterodimerizing with Jun and binding to AP-1 consensus binding sites, thus precluding a Jun/Fos interaction with gene activation. Human BATF3 is 127 amino acids (aa) in length. It contains one DNA binding motif (aa 41-59) with an adjacent leucine-zipper (aa 63-84), but lacks a transactivation domain. Full-length human BATF3 (aa 1-127) shares 80% aa sequence identity with mouse BATF3.