

DESCRIPTION

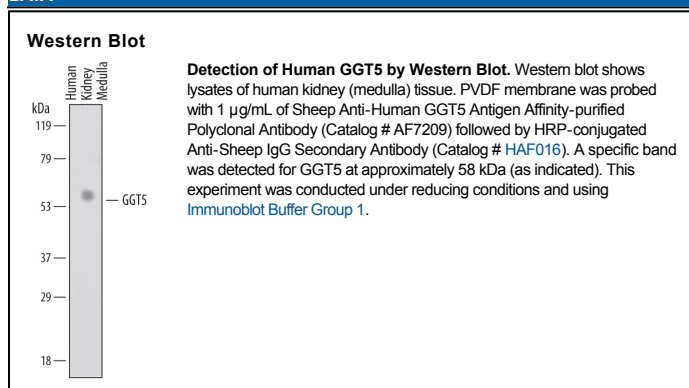
Species Reactivity	Human
Specificity	Detects human GGT5 in direct ELISAs and Western blots.
Source	Polyclonal Sheep IgG
Purification	Antigen Affinity-purified
Immunogen	<i>S. frugiperda</i> insect ovarian cell line Sf 21-derived recombinant human GGT5 Ser30-Tyr586 Accession # P36269
Formulation	Lyophilized from a 0.2 µm filtered solution in PBS with Trehalose. See Certificate of Analysis for details. *Small pack size (-SP) is supplied as a 0.2 µm filtered solution in PBS.

APPLICATIONS

Please Note: Optimal dilutions should be determined by each laboratory for each application. *General Protocols* are available in the *Technical Information* section on our website.

	Recommended Concentration	Sample
Western Blot	1 µg/mL	See Below

DATA



PREPARATION AND STORAGE

Reconstitution	Sterile PBS to a final concentration of 0.2 mg/mL.
Shipping	The product is shipped at ambient temperature. Upon receipt, store it immediately at the temperature recommended below. *Small pack size (-SP) is shipped with polar packs. Upon receipt, store it immediately at -20 to -70 °C
Stability & Storage	Use a manual defrost freezer and avoid repeated freeze-thaw cycles. <ul style="list-style-type: none"> ● 12 months from date of receipt, -20 to -70 °C as supplied. ● 1 month, 2 to 8 °C under sterile conditions after reconstitution. ● 6 months, -20 to -70 °C under sterile conditions after reconstitution.

BACKGROUND

GGT5 (Gamma GlutamylTranspeptidase 5; also GGL, GGT-rel and γ-leukotrienease) is a 74-77 kDa member of the γ-glutamyltransferase family of enzymes. It is suggested that multiple cell types express GGT5, including neurons, lymphocytes, myocardium and bronchial epithelium. It is also expressed on the surface of endothelial cells, and serves to both metabolize GSH to CysGly, and convert LTC4 to LTD4, an action that appears necessary for targeted inflammatory cell migration. Human GGT5 is a 586 amino acid (aa) type II transmembrane (TM) glycoprotein. It undergoes processing to generate a disulfide-linked heterodimer composed of a 56-58 kDa membrane-embedded heavy chain (aa 1-387, with the TM segment lying between aa 9-29) and a 20-21 kDa light chain (aa 388-586). There is one potential splice variant that shows a deletion of aa 112-133. Over aa 30-586, human GGT5 shares 78% aa identity with mouse GGT5.