

#### DESCRIPTION

<b>Species Reactivity</b>	Human
<b>Specificity</b>	Detects human DPPA2 in direct ELISAs and Western blots.
<b>Source</b>	Polyclonal Sheep IgG
<b>Purification</b>	Antigen Affinity-purified
<b>Immunogen</b>	<i>E. coli</i> -derived recombinant human DPPA2 Ser2-Thr174 Accession # Q7Z7J5
<b>Formulation</b>	Lyophilized from a 0.2 µm filtered solution in PBS with Trehalose. See Certificate of Analysis for details. *Small pack size (-SP) is supplied as a 0.2 µm filtered solution in PBS.

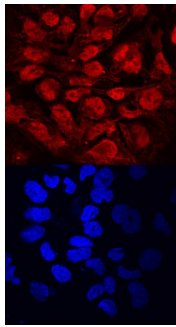
#### APPLICATIONS

**Please Note:** Optimal dilutions should be determined by each laboratory for each application. *General Protocols* are available in the *Technical Information* section on our website.

	<b>Recommended Concentration</b>	<b>Sample</b>
<b>Immunocytochemistry</b>	5-15 µg/mL	See Below

#### DATA

##### Immunocytochemistry



**DPPA2 in BG01V Human Embryonic Stem Cells.** DPPA2 was detected in immersion fixed BG01V human embryonic stem cells using Sheep Anti-Human DPPA2 Antigen Affinity-purified Polyclonal Antibody (Catalog # AF7086) at 10 µg/mL for 3 hours at room temperature. Cells were stained using the NorthernLights™ 557-conjugated Anti-Sheep IgG Secondary Antibody (red, upper panel; Catalog # NL010) and counterstained with DAPI (blue, lower panel). Specific staining was localized to nuclei. View our protocol for [Fluorescent ICC Staining of Cells on Coverslips](#).

#### PREPARATION AND STORAGE

<b>Reconstitution</b>	Sterile PBS to a final concentration of 0.2 mg/mL.
<b>Shipping</b>	The product is shipped at ambient temperature. Upon receipt, store it immediately at the temperature recommended below. *Small pack size (-SP) is shipped with polar packs. Upon receipt, store it immediately at -20 to -70 °C
<b>Stability &amp; Storage</b>	<b>Use a manual defrost freezer and avoid repeated freeze-thaw cycles.</b> <ul style="list-style-type: none"> <li>● 12 months from date of receipt, -20 to -70 °C as supplied.</li> <li>● 1 month, 2 to 8 °C under sterile conditions after reconstitution.</li> <li>● 6 months, -20 to -70 °C under sterile conditions after reconstitution.</li> </ul>

#### BACKGROUND

DPPA2 (Developmental pluripotency associated 2; also ESCA, CT100 and PESCRG1) is a 38-39 kDa member of both the DPPA and cancer-testis family of proteins. It is found in pluripotent stem cells in a pattern that parallels that of Oct4, and likely contributes to formation of the ICM, plus the maintenance of cells in an undifferentiated state. DPPA2 is also found in spermatocytes and select tumor types. Human DPPA2 is 298 amino acids (aa) in length. It contains one DNA-binding SAP domain that is involved in chromosomal organization (aa 92-126). One potential isoform variant has been reported that shows a deletion of aa 61-71. Over aa 2-174, human DPPA2 shares only 36% aa identity with mouse DPPA2.