

DESCRIPTION

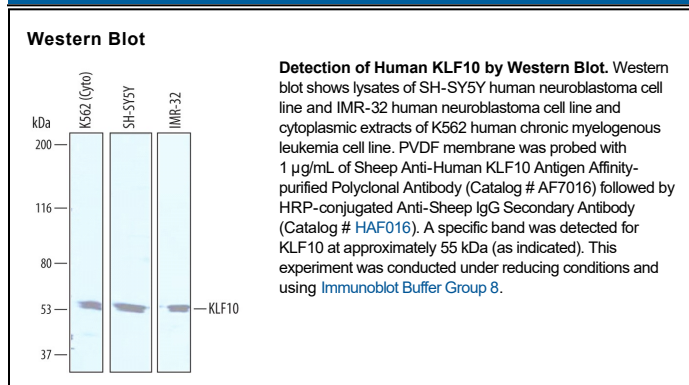
Species Reactivity	Human
Specificity	Detects human KLF10 in direct ELISAs and Western blots. In direct ELISAs, less than 3% cross-reactivity with recombinant human KLF12 is observed.
Source	Polyclonal Sheep IgG
Purification	Antigen Affinity-purified
Immunogen	<i>E. coli</i> -derived recombinant human KLF10 Asn31-Ser154 Accession # Q13118
Formulation	Lyophilized from a 0.2 µm filtered solution in PBS with Trehalose. See Certificate of Analysis for details. *Small pack size (-SP) is supplied either lyophilized or as a 0.2 µm filtered solution in PBS.

APPLICATIONS

Please Note: Optimal dilutions should be determined by each laboratory for each application. [General Protocols](#) are available in the Technical Information section on our website.

	Recommended Concentration	Sample
Western Blot	1 µg/mL	See Below

DATA



PREPARATION AND STORAGE

Reconstitution	Sterile PBS to a final concentration of 0.2 mg/mL.
Shipping	The product is shipped at ambient temperature. Upon receipt, store it immediately at the temperature recommended below. *Small pack size (-SP) is shipped with polar packs. Upon receipt, store it immediately at -20 to -70 °C
Stability & Storage	Use a manual defrost freezer and avoid repeated freeze-thaw cycles. <ul style="list-style-type: none"> 12 months from date of receipt, -20 to -70 °C as supplied. 1 month, 2 to 8 °C under sterile conditions after reconstitution. 6 months, -20 to -70 °C under sterile conditions after reconstitution.

BACKGROUND

KLF10 (Kruppel-like factor 10; also TIEG1 and EGR-α) is a 55-65 kDa member of the Sp1 C2H2-type zinc-finger protein family. It appears to be very widely expressed, and functions as a transcriptional repressor in a noncovalent complex with JARID1B. KLF10 is induced by TGF-β, GDNF and estrogen, and inhibits transcription of genes such as BI-1, OPG and SMAD7. By suppressing SMAD7, it promotes TGF-β signaling. Human KLF10 is 480 amino acids (aa) in length and contains three C2H2-type zinc-finger motifs (aa 369-451). There is one potential alternate splice form that shows a deletion of aa 2-11. Over aa 31-154, human KLF10 shares 79% aa identity with mouse KLF10/mGIF.