

DESCRIPTION

Species Reactivity	Mouse
Specificity	Detects mouse FOLR1 in direct ELISAs. In direct ELISAs, approximately 30% cross-reactivity with recombinant human FOLR1 is observed.
Source	Polyclonal Sheep IgG
Purification	Antigen Affinity-purified
Immunogen	Chinese hamster ovary cell line CHO-derived recombinant mouse FOLR1 Arg23-Ser232 Accession # P35846
Formulation	Lyophilized from a 0.2 µm filtered solution in PBS with Trehalose. See Certificate of Analysis for details. *Small pack size (-SP) is supplied either lyophilized or as a 0.2 µm filtered solution in PBS.

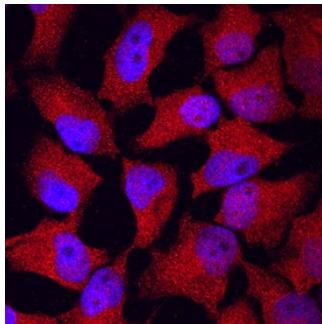
APPLICATIONS

Please Note: Optimal dilutions should be determined by each laboratory for each application. *General Protocols* are available in the *Technical Information* section on our website.

	Recommended Concentration	Sample
Immunocytochemistry	5-15 µg/mL	See Below
Immunohistochemistry	0.3-15 µg/mL	See Below

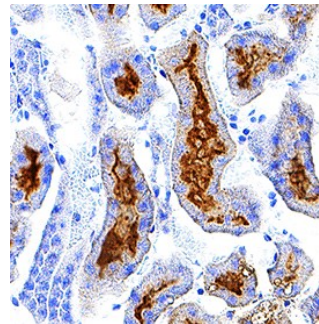
DATA

Immunocytochemistry



FOLR1 in HeLa Human Cell Line. FOLR1 was detected in immersion fixed HeLa human cervical epithelial carcinoma cell line using Sheep Anti-Mouse FOLR1 Antigen Affinity-purified Polyclonal Antibody (Catalog # AF6936) at 10 µg/mL for 3 hours at room temperature. Cells were stained using the NorthernLights™ 557-conjugated Anti-Sheep IgG Secondary Antibody (red; Catalog # NL010) and counterstained with DAPI (blue). Specific staining was localized to cytoplasm. View our protocol for [Fluorescent ICC Staining of Cells on Coverslips](#).

Immunohistochemistry



FOLR1 in Mouse Kidney. FOLR1 was detected in perfusion fixed frozen sections of mouse kidney using Sheep Anti-Mouse FOLR1 Antigen Affinity-purified Polyclonal Antibody (Catalog # AF6936) at 0.3 µg/mL overnight at 4 °C. Tissue was stained using the Anti-Sheep HRP-DAB Cell & Tissue Staining Kit (brown; Catalog # CTS019) and counterstained with hematoxylin (blue). Specific staining was localized to convoluted tubules. View our protocol for [Chromogenic IHC Staining of Frozen Tissue Sections](#).

PREPARATION AND STORAGE

Reconstitution	Sterile PBS to a final concentration of 0.2 mg/mL.
Shipping	The product is shipped at ambient temperature. Upon receipt, store it immediately at the temperature recommended below. *Small pack size (-SP) is shipped with polar packs. Upon receipt, store it immediately at -20 to -70 °C
Stability & Storage	Use a manual defrost freezer and avoid repeated freeze-thaw cycles. <ul style="list-style-type: none"> • 12 months from date of receipt, -20 to -70 °C as supplied. • 1 month, 2 to 8 °C under sterile conditions after reconstitution. • 6 months, -20 to -70 °C under sterile conditions after reconstitution.

BACKGROUND

Folate receptor 1 (FOLR1; also folate receptor alpha and folate binding protein 1/FOLBP1) is a 40-50 kDa member of the folate receptor family. FOLR1 is expressed in reticulocytes, retinal Muller cells and placenta, plus renal, mammary and thymic epithelium, where it mediates the transport of 5-methyltetrahydrofolate into the cell. The mouse FOLR1 prepropeptide is 255 amino acid (aa) in length. It contains a GPI-linked glycoprotein that is 208 aa in size (aa 25-232), and which possesses three potential N-linked glycosylation sites. There is one potential isoform variant that shows a 105 aa substitution for aa 110-255. Over aa 23-232, mouse FOLR1 shares 83% and 93% aa sequence identity with human and rat FOLR1, respectively.