

DESCRIPTION

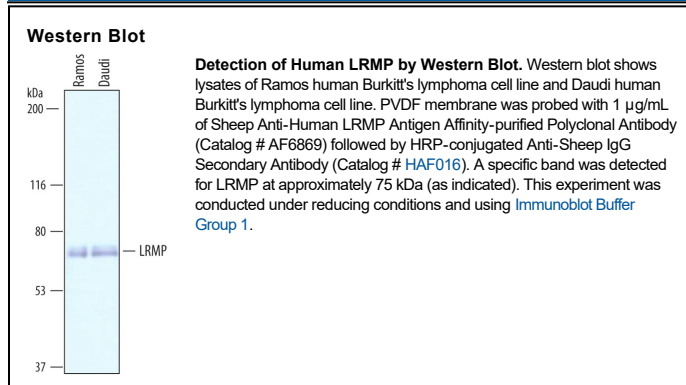
Species Reactivity	Human
Specificity	Detects human LRMP in direct ELISAs and Western blots.
Source	Polyclonal Sheep IgG
Purification	Antigen Affinity-purified
Immunogen	<i>E. coli</i> -derived recombinant human LRMP Gln143-Pro292 Accession # AAI26418
Formulation	Lyophilized from a 0.2 µm filtered solution in PBS with Trehalose. See Certificate of Analysis for details. *Small pack size (-SP) is supplied either lyophilized or as a 0.2 µm filtered solution in PBS.

APPLICATIONS

Please Note: Optimal dilutions should be determined by each laboratory for each application. *General Protocols* are available in the *Technical Information* section on our website.

	Recommended Concentration	Sample
Western Blot	1 µg/mL	See Below

DATA



PREPARATION AND STORAGE

Reconstitution	Sterile PBS to a final concentration of 0.2 mg/mL.
Shipping	The product is shipped at ambient temperature. Upon receipt, store it immediately at the temperature recommended below. *Small pack size (-SP) is shipped with polar packs. Upon receipt, store it immediately at -20 to -70 °C
Stability & Storage	Use a manual defrost freezer and avoid repeated freeze-thaw cycles. <ul style="list-style-type: none"> • 12 months from date of receipt, -20 to -70 °C as supplied. • 1 month, 2 to 8 °C under sterile conditions after reconstitution. • 6 months, -20 to -70 °C under sterile conditions after reconstitution.

BACKGROUND

LRMP (Lymphoid restricted membrane protein; also JAW1) is a 74-76 kDa protein that is associated with the ER. In contrast to its name, LRMP expression is not restricted to lymphoid cell types. Cells known to express LRMP include stomach chief cells, seminal vesicle cuboidal epithelium, neurons, germinal center B cells, cortical thymocytes, and cells of the taste buds. LRMP is suggested to participate in intracellular peptide transport. It is also reported to physically interact with IP3RP. Human LRMP is a 56 kDa (predicted), single-pass transmembrane (TM) protein that is 499 amino acids (aa) in length. It contains a 439 aa cytoplasmic region (aa 1-439), a 21 aa TM segment (aa 440-460) and a 39 aa luminal domain (aa 461-499) that is cleaved after Ala469 to generate a type IV TM protein. LRMP runs anomalously in SDS-Page, and the 75 kDa form may be linked to an isoform that utilizes a Leu start site 56 aa upstream of the start site for the 499 aa isoform. In this regard, a human isoform has been reported that is 62 kDa in size. Mature mouse LRMP is 509 aa in length (after cleavage) and runs at 65 kDa in SDS-PAGE. Over aa 143-292, human LRMP shares 93% aa identity with mouse LRMP.