

## DESCRIPTION

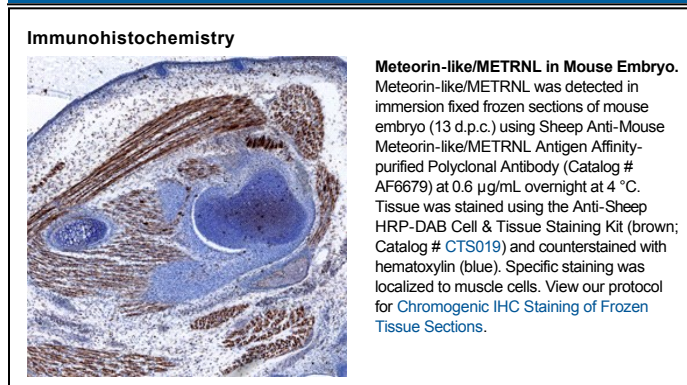
<b>Species Reactivity</b>	Mouse
<b>Specificity</b>	Detects mouse Meteorin-like/METRNL in direct ELISAs. In direct ELISAs, less than 1% cross-reactivity with recombinant mouse Meteorin is observed.
<b>Source</b>	Polyclonal Sheep IgG
<b>Purification</b>	Antigen Affinity-purified
<b>Immunogen</b>	Chinese hamster ovary cell line CHO-derived recombinant mouse Meteorin-like/METRNL Accession # Q8VE43
<b>Formulation</b>	Lyophilized from a 0.2 µm filtered solution in PBS with Trehalose. See Certificate of Analysis for details. *Small pack size (-SP) is supplied as a 0.2 µm filtered solution in PBS.

## APPLICATIONS

**Please Note:** Optimal dilutions should be determined by each laboratory for each application. *General Protocols* are available in the *Technical Information* section on our website.

	Recommended Concentration	Sample
<b>Immunohistochemistry</b>	5-15 µg/mL	See Below

## DATA



## PREPARATION AND STORAGE

<b>Reconstitution</b>	Sterile PBS to a final concentration of 0.2 mg/mL.
<b>Shipping</b>	The product is shipped at ambient temperature. Upon receipt, store it immediately at the temperature recommended below. *Small pack size (-SP) is shipped with polar packs. Upon receipt, store it immediately at -20 to -70 °C
<b>Stability &amp; Storage</b>	<b>Use a manual defrost freezer and avoid repeated freeze-thaw cycles.</b> <ul style="list-style-type: none"> <li>• 12 months from date of receipt, -20 to -70 °C as supplied.</li> <li>• 1 month, 2 to 8 °C under sterile conditions after reconstitution.</li> <li>• 6 months, -20 to -70 °C under sterile conditions after reconstitution.</li> </ul>

## BACKGROUND

Meteorin-like protein (METRNL) is a 311 amino acid (aa) protein that shows 45% homology with Meteorin (in mouse). Meteorin itself is a secreted 30 kDa protein that is expressed in glial and neuronal cells and their precursors during development and in the adult (1-3). In the adult Meteorin is primarily expressed by astrocytes (3). Meteorin promotes neurite outgrowth, glial cell differentiation, and neuronal survival following excitotoxic injury (2-5). It also inhibits sprouting angiogenesis and promotes blood vessel maturation (1). Mouse Meteorin-like protein is synthesized with a 45 amino acid (aa) signal peptide and is selectively expressed in the otic vesicle during inner ear development (6, 7). Mature mouse Meteorin-like protein shares 79% and 98% aa sequence identity with human and rat Meteorin-like protein, respectively. Alternate splicing generates an additional isoform that lacks the N-terminal 82 amino acids including the signal peptide. R&D Systems in-house testing indicates that Meteorin-like protein enhances the outgrowth of neurites from cultured mouse cortical neurons. The promoter region of the METRNL gene contains a recognition site for the Pax2, Pax5, and Pax8 transcription factors, and Pax2 binds specifically to this region (7). METRNL is the only gene found within the terminus of the human chromosome 17 q-arm which can be deleted in the rare Ring 17 syndrome (8).

### References:

1. Park, J.A. *et al.* (2008) *Glia* **56**:247.
2. Jorgensen, J.R. *et al.* (2009) *J. Mol. Neurosci.* **39**:104.
3. Lee, H.S. *et al.* (2010) *J. Cell Sci.* **123**:1959.
4. Nishino, J. *et al.* (2004) *EMBO J.* **23**:1998.
5. Jorgensen, J.R. *et al.* (2011) *Neurobiol. Dis.* **41**:160.
6. Accession # Q8VE43.
7. Ramialison, M. *et al.* (2008) *Genome Biol.* **9**:R145.
8. Surace, C. *et al.* (2009) *Clin. Genet.* **76**:256.