

DESCRIPTION

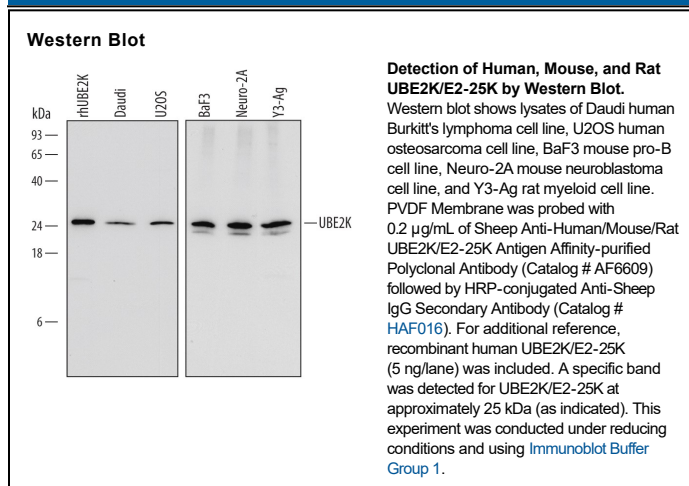
Species Reactivity	Human/Mouse/Rat
Specificity	Detects human, mouse, and rat UBE2K/E2-25K in Western blots.
Source	Polyclonal Sheep IgG
Purification	Antigen Affinity-purified
Immunogen	<i>E. coli</i> -derived recombinant human UBE2K/E2-25K Ala2-Asn200 Accession # P61086
Formulation	Lyophilized from a 0.2 µm filtered solution in PBS with Trehalose. See Certificate of Analysis for details. *Small pack size (-SP) is supplied either lyophilized or as a 0.2 µm filtered solution in PBS.

APPLICATIONS

Please Note: Optimal dilutions should be determined by each laboratory for each application. [General Protocols](#) are available in the Technical Information section on our website.

	Recommended Concentration	Sample
Western Blot	0.2 µg/mL	See Below

DATA



PREPARATION AND STORAGE

Reconstitution	Sterile PBS to a final concentration of 0.2 mg/mL.
Shipping	The product is shipped at ambient temperature. Upon receipt, store it immediately at the temperature recommended below. *Small pack size (-SP) is shipped with polar packs. Upon receipt, store it immediately at -20 to -70 °C
Stability & Storage	Use a manual defrost freezer and avoid repeated freeze-thaw cycles. <ul style="list-style-type: none"> 12 months from date of receipt, -20 to -70 °C as supplied. 1 month, 2 to 8 °C under sterile conditions after reconstitution. 6 months, -20 to -70 °C under sterile conditions after reconstitution.

BACKGROUND

UBE2K (Ubiquitin-conjugating enzyme E2; also HIP-2, UBE2K-25K and LIG) is a 24-26 kDa cytosolic member of the UBE family of proteins. It is widely expressed (in neurons monocytes and neutrophils), and acts to ubiquitinate proteins targeted for degradation. UBE2K serves as an E2 ubiquitin conjugating enzyme with a preference for ubiquitin chain generation through Lys48. It appears to polyubiquitinate targets once they have been monoubiquitinated, and to act as either a monomer or dimer. Human UBE2K is 200 amino acids (aa) in length and it contains one UBA domain (aa 160-200). There are two potential splice variants that show a deletion of aa 22-72 and 134-176, respectively. Human and mouse UBE2K are identical in aa sequence.