

DESCRIPTION

Species Reactivity	Human
Specificity	Detects human CTGF/CCN2 C-Terminus in direct ELISAs. In direct ELISAs, approximately 15% cross-reactivity with recombinant rat CTGF is observed.
Source	Polyclonal Goat IgG
Purification	Antigen Affinity-purified
Immunogen	<i>E. coli</i> -derived recombinant human CTGF/CCN2 C-Terminus Glu247-Ala349 Accession # P29279
Formulation	Lyophilized from a 0.2 µm filtered solution in PBS with Trehalose. See Certificate of Analysis for details. *Small pack size (-SP) is supplied either lyophilized or as a 0.2 µm filtered solution in PBS.

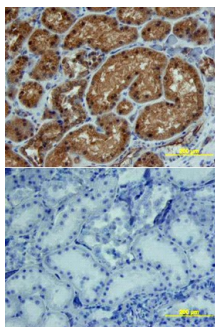
APPLICATIONS

Please Note: Optimal dilutions should be determined by each laboratory for each application. *General Protocols* are available in the *Technical Information* section on our website.

	Recommended Concentration	Sample
Immunohistochemistry	5-15 µg/mL	See Below

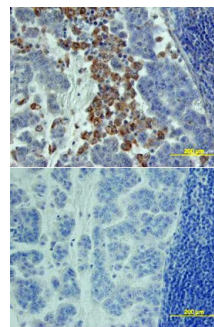
DATA

Immunohistochemistry



CTGF/CCN2 in Human Kidney. CTGF/CCN2 was detected in immersion fixed paraffin-embedded sections of human kidney array using Goat Anti-Human CTGF/CCN2 C-Terminus Antigen Affinity-purified Polyclonal Antibody (Catalog # AF660) at 15 µg/mL overnight at 4 °C. Tissue was stained using the Anti-Goat HRP-DAB Cell & Tissue Staining Kit (brown; Catalog # CTS008) and counterstained with hematoxylin (blue). Lower panel shows a lack of labeling if primary antibodies are omitted and tissue is stained only with secondary antibody followed by incubation with detection reagents. View our protocol for [Chromogenic IHC Staining of Paraffin-embedded Tissue Sections](#).

Immunohistochemistry



CTGF/CCN2 in Human Pancreas. CTGF/CCN2 was detected in immersion fixed paraffin-embedded sections of human pancreas array using Goat Anti-Human CTGF/CCN2 C-Terminus Antigen Affinity-purified Polyclonal Antibody (Catalog # AF660) at 15 µg/mL overnight at 4 °C. Tissue was stained using the Anti-Goat HRP-DAB Cell & Tissue Staining Kit (brown; Catalog # CTS008) and counterstained with hematoxylin (blue). Lower panel shows a lack of labeling if primary antibodies are omitted and tissue is stained only with secondary antibody followed by incubation with detection reagents. View our protocol for [Chromogenic IHC Staining of Paraffin-embedded Tissue Sections](#).

PREPARATION AND STORAGE

Reconstitution	Reconstitute at 0.2 mg/mL in sterile PBS.
Shipping	The product is shipped at ambient temperature. Upon receipt, store it immediately at the temperature recommended below. *Small pack size (-SP) is shipped with polar packs. Upon receipt, store it immediately at -20 to -70 °C
Stability & Storage	Use a manual defrost freezer and avoid repeated freeze-thaw cycles. <ul style="list-style-type: none"> • 12 months from date of receipt, -20 to -70 °C as supplied. • 1 month, 2 to 8 °C under sterile conditions after reconstitution. • 6 months, -20 to -70 °C under sterile conditions after reconstitution.

BACKGROUND

CTGF belongs to the CCN (CYR61/CTGF/NOV) family of secreted proteins that share a common multimodular organization. Each protein contains an IGF-binding protein domain, a von Willebrand factor type C domain, a thrombospondin type I domain, and a cysteine knot domain. The multimodular CTGF has the ability to bind multiple ligands and has numerous effects on development, differentiation, and disease. The C-terminal cysteine knot motif contains the heparin and low density lipoprotein receptor (LDLR) binding sites that contributes to the adhesive and mitogenic properties of CTGF.