

DESCRIPTION

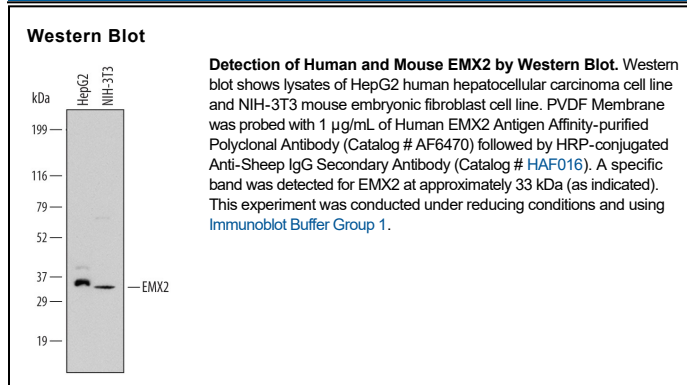
Species Reactivity	Human/Mouse
Specificity	Detects human EMX2 in Western blots.
Source	Polyclonal Sheep IgG
Purification	Antigen Affinity-purified
Immunogen	<i>E. coli</i> -derived recombinant human EMX2 Asn49-Ser143 Accession # Q04743
Formulation	Lyophilized from a 0.2 µm filtered solution in PBS with Trehalose. See Certificate of Analysis for details. *Small pack size (-SP) is supplied either lyophilized or as a 0.2 µm filtered solution in PBS.

APPLICATIONS

Please Note: Optimal dilutions should be determined by each laboratory for each application. *General Protocols* are available in the *Technical Information* section on our website.

	Recommended Concentration	Sample
Western Blot	1 µg/mL	See Below

DATA



PREPARATION AND STORAGE

Reconstitution	Sterile PBS to a final concentration of 0.2 mg/mL.
Shipping	The product is shipped at ambient temperature. Upon receipt, store it immediately at the temperature recommended below. *Small pack size (-SP) is shipped with polar packs. Upon receipt, store it immediately at -20 to -70 °C
Stability & Storage	Use a manual defrost freezer and avoid repeated freeze-thaw cycles. <ul style="list-style-type: none"> ● 12 months from date of receipt, -20 to -70 °C as supplied. ● 1 month, 2 to 8 °C under sterile conditions after reconstitution. ● 6 months, -20 to -70 °C under sterile conditions after reconstitution.

BACKGROUND

EMX-2 (also Empty spiracles homolog 2) is a 30-33 kDa member of the EMX homeobox family of molecules. It is expressed in embryonic neural stem and progenitor cells, and promotes their commitment to a neuronal phenotype. In a more global sense, it also promotes the formation of networks that favor visual sensation. In the adult, EMX-2 is found in neural stem cells where it acts to maintain a pool of available stem cells. Human EMX-2 is 252 amino acids (aa) in length. It contains one poly-Ala region (aa 54-59) and a DNA-binding homeobox domain (aa 154-213). There is one potential splice variant that shows a 33 aa substitution for aa 137-252. Over aa 59-143, human EMX-2 shares 98% aa identity with mouse EMX-2.