

DESCRIPTION

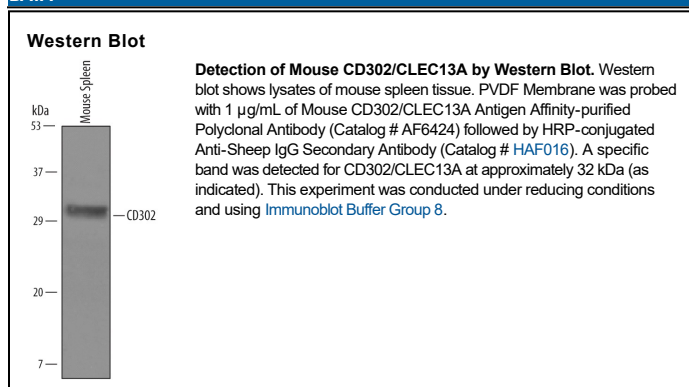
Species Reactivity	Mouse
Specificity	Detects mouse CD302/CLEC13A in direct ELISAs and Western blots. In direct ELISAs, approximately 30% cross-reactivity with recombinant human CD302 is observed.
Source	Polyclonal Sheep IgG
Purification	Antigen Affinity-purified
Immunogen	Mouse myeloma cell line NS0-derived recombinant mouse CD302/CLEC13A Asp21-His165 Accession # Q9DCG2
Formulation	Lyophilized from a 0.2 µm filtered solution in PBS with Trehalose. See Certificate of Analysis for details. *Small pack size (-SP) is supplied either lyophilized or as a 0.2 µm filtered solution in PBS.

APPLICATIONS

Please Note: Optimal dilutions should be determined by each laboratory for each application. [General Protocols](#) are available in the Technical Information section on our website.

	Recommended Concentration	Sample
Western Blot	1 µg/mL	See Below

DATA



PREPARATION AND STORAGE

Reconstitution	Sterile PBS to a final concentration of 0.2 mg/mL.
Shipping	The product is shipped at ambient temperature. Upon receipt, store it immediately at the temperature recommended below. *Small pack size (-SP) is shipped with polar packs. Upon receipt, store it immediately at -20 to -70 °C
Stability & Storage	Use a manual defrost freezer and avoid repeated freeze-thaw cycles. <ul style="list-style-type: none"> 12 months from date of receipt, -20 to -70 °C as supplied. 1 month, 2 to 8 °C under sterile conditions after reconstitution. 6 months, -20 to -70 °C under sterile conditions after reconstitution.

BACKGROUND

CD302 (also DCL-1 and CLEC13A) is a 31-36 kDa member of the C-type lectin domain family of proteins. It is expressed on cells involved in phagocytosis, including neutrophils, monocytes, dendritic cells and macrophages. CD302 is suggested to facilitate phagocytosis, and participate in cell adhesion and migration. Mature mouse CD302 is a 208 amino acid (aa) type I transmembrane glycoprotein. It contains a 146 aa extracellular domain (ECD) (aa 21-165) plus a 42 aa cytoplasmic region. The ECD possesses one C-type lectin domain (aa 30-149) that apparently cannot bind carbohydrate. In human, CD302 has also been detected in dendritic cells as the C-terminal portion of a 215 kDa fusion protein that involves DEC205. CD302 contributes aa 23-232 to this fusion protein. Mouse CD302 has two potential splice variants. One shows an alternative start site at Met61, while another shows a deletion of aa 154-162. Over aa 21-165, mouse CD302 shares 82% and 92% aa identity with human and rat CD302, respectively.